

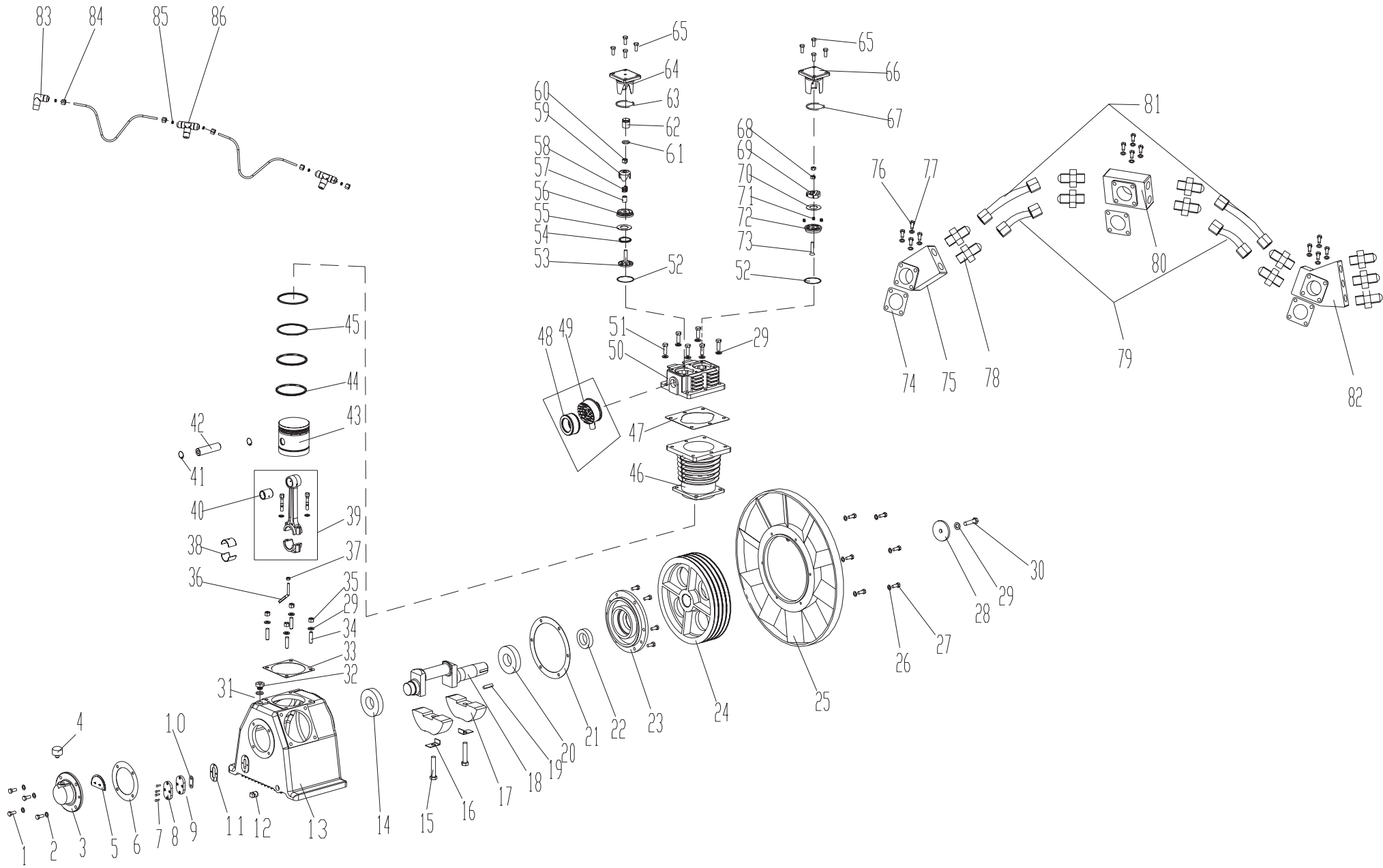
5750 DONAHUE STREET, MONTREAL, QUEBEC. H4S 1C1
TEL.: 514-336-3820, 800-390-0140 FAX: 514-745-1764
www.airtekltd.com E-MAIL info@airtekltd.com

Fu Sheng

TA-120 Pump



TA-120



ITEM	DESCRIPTION	QTY	PART NO.
1	BOLT, M10 X 25	10	91501-1310025
2	COPPER WASHER	20	92521-191000
3	REAR BEARING COVER	1	70134-57061
4	BREATHER ASS'Y	1	70124-57601
5	REAR COVER OIL BAFFLE	1	70134-57590
6	REAR BRG CVR PACKING	1	70134-57960
7	GAUGE SET BOLT	4	91507-2305016
8	OIL GLASS&COVER	1	-
9	OIL COVER	1	70124-57700
10	OIL COVER GLASS	1	70124-57750
11	GAUGE COVER SEAL	1	70124-57730
12	CRANKCASE OIL PLUG	1	90112-100404
13	CRANKCASE	1	70135-57010
14	BEARING #30310	1	93502-30310
15	CTR WGT MGT BOLT	2	70135-56811
16	CTR WGT LK WASHER	2	70135-56830
17	CRANKSHAFT CTR WGT	2	70135-56032
18	CRANKSHAFT	1	70135-56011
19	V-PULLEY KEY	1	70134-56060
20	BEARING #32210	1	93502-32210
21	FRONT BEARING GASKET	1	70135-57950
22	FRONT OIL SEAL	1	70134-57080
23	FRONT BEARING COVER	1	70135-57030
24	COMPRESSOR PULLEY	1	70135-76011
25	COMP PULLEY FAN	1	70135-76310
26	WASHER	6	92522-130800
27	BOLT	6	91501-2308030
28	PULLEY THRUST WASHER	1	70124-76210
29	SPRING WASHER	31	92522-131200
30	BOLT	1	91501-1312050
31	O-RING P#18	1	93601-810018
32	CRANKCASE OIL CAP	1	70123-57190
33	CYL & CASE PACKING	3	70135-51610
34	CYL & CASE BOLT	12	70135-51810
35	NUT	12	92501-131200
36	OIL SPLASH DIPPER	3	70135-61281
37	NUT	3	92501-130800
38	CONN.ROD CRANK PIN METL	6	70125-61090
39	CONN.ROD ASS'Y	3	70125-61200
40	CONN.ROD PISTON PIN METL	3	50135-61081
41	PISTON PIN SNAP RING	6	70125-61070
42	PISTON PIN	3	70125-61120
43	PISTON	3	70135-61010
44	OIL CONTROL RING	6	70125-61050
45	COMPRESSION RING	6	70125-61030
46	CYLINDER	3	70135-51011
47	CYL & HEAD PACKING	3	70135-11610
48	FILTER ELEMENT	3	70123-66140
49	AIR STRAINER ASS'Y	3	70135-66000
50	CYLINDER HEAD	3	70135-11011
51	BOLT	18	91501-1312035
52	I/O VALVE SEAT GASKET	6	70125-11110
53	INLET VALVE RECEIVER	3	70125-31023
54	INLET VALVE SPRING	3	70125-31070
55	I VALVE PLATE	3	50125-31030
56	INTER VALVE SEAT	3	70125-31010

ITEM	DESCRIPTION	QTY	PART NO.
57	I. VALVE UNLOAD FORK GUIDE	3	70125-31090
58	UNLOADING SPRING	3	70125-11230
59	I.VALVE UNLOAD FORK	3	70125-31080
60	SLOTTED NUT	3	92517-231200
61	O-RING P#22A	3	93601-870022A
62	UNLOADING PISTON	3	70125-11220
63	O-RING G#65	3	93602-810065
64	I. VALVE PUSH COVER	3	70125-11151
65	BOLT	24	91501-1310025
66	O. VALVE PUSH COVER	3	70125-11451
67	VITON O-RING G#65	3	93602-870065
68	NUT	6	92501-231000
69	OUTLET VALVE RECEIVR	3	70125-41025
70	O VALVE PLATE	3	70125-41030
71	OUTLET VALVE SPRING	9	-
72	OUTLET VALVE SEAT	3	70125-41012
73	BOLT	3	70124-41810
74	PACKING	3	70125-87510
75	DIST. MANIFOLD #C	1	70135-87030-4010
76	BOLT	12	-
77	WASHER	24	92522-131000
78	OUTLET PIPE JOINT	11	79920-130606
79	COMP.BODY DIS. PIPING ASSEMBLY	2	70135-87100
80	DIST. MANIFOLD #B	1	70135-87020
81	COMP.BODY DIS. PIPING ASSEMBLY	2	70135-87100
82	DIST. MANIFOLD #A	1	701312A2-87011
83	COPPER ELBOW	1	90125-150101
84	COPPER NUT	5	90128-150102
85	COPPER RING	5	90127-150202
86	COPPER JOINT	2	90126-150101