

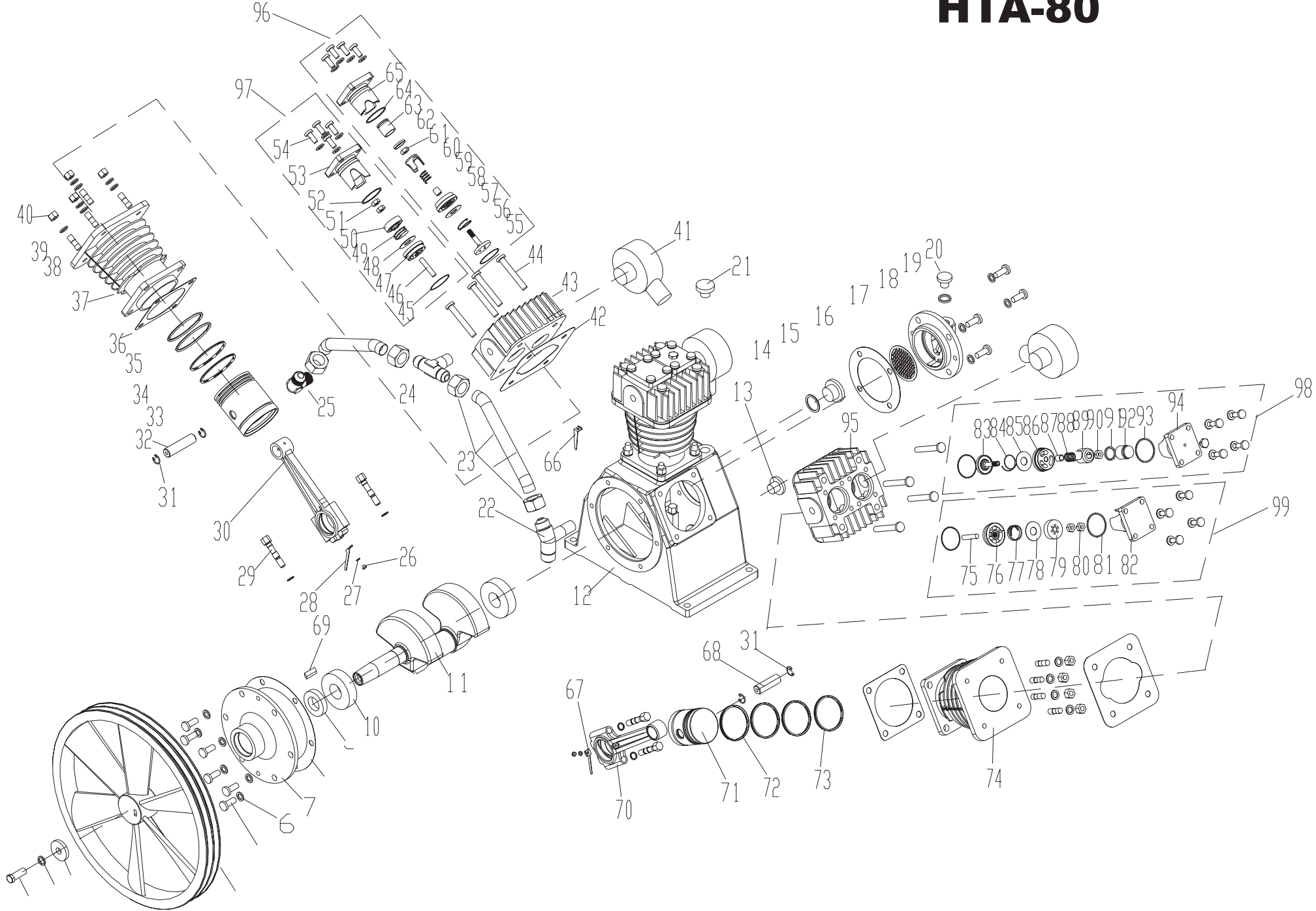
5750 DONAHUE STREET, MONTREAL, QUEBEC. H4S 1C1  
TEL.: 514-336-3820, 800-390-0140 FAX: 514-745-1764  
www.airtekltd.com E-MAIL info@airtekltd.com

## Fu Sheng

### HTA-80 Pump



# HTA-80



ITEM	DESCRIPTION	QTY	PART NO.
1	BOLT	1	91501-1312030-8.8
2	SPRING WASHER M	1	92522-131200
3	PULLEY LOCK WASHER	1	70123-76210
4	COMPRESSOR PULLEY	1	70133-76010
5	BOLT	10	91501-1310020-8.8
6	COPPER WASHER	34	92521-191000
7	FRONT BEARING COVER	1	70133-57030
8	FRONT BEARING COVER PACKING	1	70123-57950
9	OIL SEAL	1	70123-57080
10	BEARING	2	9350112-6306
11	CRANKSHAFT	1	70133-56011
12	CRANKCASE	1	70133-57010
13	SCREW PLUG	1	90112-100404
14	O-RING	1	93602-8106026
15	GAUGE SET	1	-
16	REAR BEARING COVER PACKING	1	70133-57960
17	REAR BEARING COVER BLOCK	1	70133-57590
18	REAR BEARING COVER	1	70133-57061
19	AIR STRAINER O-RING	1	93601-810018
20	AIR STRAINER ASS'Y	1	70103-57600
21	CRANKCASE OIL CAP	1	70123-57190
22	PIPE JOINT	1	701308B1-87050
23	OUTLET PIPE	2	70133-87101
24	PIPE JOINT	1	-
25	PIPE JOINT	1	701208A1-87011
26	BOLT	3	-
27	SPRING WASHER M	3	92522-130400
28	1st STAGE OIL SPLASH DIPPER	1	70122-61282
29	CONNECTING ROD BOLT	6	70123-61250
30	CONNECTING ROD ASSEMBLY	3	70123-61200
31	1st STAGE PISTON PIN LOCK RING	6	70123-61070
32	1st STAGE PISTON PIN	2	70123-61120
33	PISTON	2	70123-61012
34	1st STAGE OIL CONTROL RING	3	70123-61050
35	1st STAGE OIL COMPRESSOR RING	6	70123-61030
36	1st STAGE CYLINDER CRANKCASE PACKING	2	70123-51610
37	1st STAGE CYLINDER	2	70123-51012
38	BOLT	12	70123-51810
39	SPRING WASHER M	12	92522-131000
40	NUT	12	92501-131000
41	AIR STRAINER SET	2	70123-66000
42	1st STAGE AND 2nd STAGE CYLINDER HEAD PACKING	3	70123-11612
43	1st STAGE CYLINDER HEAD	2	70123-11010
44	BOLT	12	-
45	1st STAGE AND 2nd STAGE WASHER	6	70123-11110
46	BOLT	2	70123-41810
47	1st STAGE OUTLET VALVE SEAT	2	70123-41011
48	1st STAGE PLATE	4	70123-31030
49	1st STAGE OUTLET VALVE SPRING	2	70123-41070
50	1st OUTLET VALVE RECEIVER	2	70123-41020
51	1st STAGE LOCK NUT	4	92502-230800
52	1st STAGE INLET VALVE PUSH COVER O-RING	2	93602-870040
53	1st STAGE OUTLET VALVE PUSH COVER	2	70123-11450
54	INLET VALVE PUSH COVER BOLT	24	-
55	1st STAGE INLET VALVE RECEIVER	2	70123-31020
56	1st STAGE INLET VALVE SPRING	2	70123-31070

ITEM	DESCRIPTION	QTY	PART NO.
57	1st STAGE INLET VALVE SEAT	2	70123-31010
58	1st STAGE UNLOAD FORK GUIDE	2	70123-31090
59	1st STAGE UNLOAD SPRING	2	70123-11230
60	1st STAGE UNLOAD FORK	2	70123-31080
61	LOCK NUT	2	92518-230800
62	1st STAGE UNLOADING PISTON O-RING	2	93601-810020
63	UNLOADING PISTON	2	70123-11220
64	INLET VALVE PUSH COVER O-RING	2	93602-810040
65	INLET VALVE PUSH COVER	2	70123-11150
66	OIL SPLASH DIPPER	1	70132-61290
67	2nd STAGE CONNECTING ROD ASSEMBLY	1	70122-61282
68	2nd STAGE OIL CONTROL RING	1	70173-62120
69	COMPRESSOR PULLEY PIN	1	70123-56061
70	2nd STAGE COMPRESSION RING	1	70173-62201
71	2nd STAGE CYLINDER	1	70173-62010
72	2nd STAGE OIL CONTROL RING	2	70112-61050
73	2nd STAGE OIL COMPRESSOR RING	2	70112-61031
74	2nd STAGE CYLINDER	1	70173-52010
75	2nd stage OUTLET VALVE BOLT	1	70123-41810
76	2nd OUTLET VALVE RECEIVER	1	70123-41011
77	2nd STAGE INLET VALVE SPRING	1	70123-41070
78	2nd STAGE INLET VALVE PLATE	1	70123-31030
79	2nd OUTLET VALVE RECEIVER	1	70123-41020
80	2nd STAGE INLET VALVE LOCK NUT	2	92502-230800
81	2nd STAGE INLET VALVE PUSH COVER O-RING	1	93602-870040
82	2nd STAGE OUTLET VALVE PUSH COVER	2	70123-11450
83	2nd STAGE INLET VALVE RECEIVER	1	70173-32020
84	2nd STAGE INLET VALVE SPRING	1	70123-31070
85	2nd STAGE PLATE	1	70123-31030
86	2nd STAGE INLET VALVE SEAT	1	70123-31010
87	2nd STAGE UNLOAD FORK GUIDE	1	70123-31090
88	2nd STAGE UNLOADING PISTON O-RING	1	70123-11230
89	2nd STAGE UNLOAD FORK	1	70123-31080
90	LOCK NUT	1	92518-230800
91	2nd STAGE UNLOADING PISTON O-RING	1	93601-870020
92	2nd STAGE UNLOADING PISTON	1	70123-11220
93	2nd stage in-outlet valve push cover O ring	1	93602-870040
94	2nd STAGE INLET VALVE PUSH COVER	1	70123-11150
95	2nd STAGE CYLINDER HEAD	1	70123-11010
96	1nd INLET VALVE ASS'Y	2	70123-31000
97	1nd OUTLET VALVE ASS'Y	2	70123-41000
98	2nd INLET VALVE ASS'Y	1	70173-32000
99	2nd OUTLET VALVE ASS'Y	1	70123-41000