



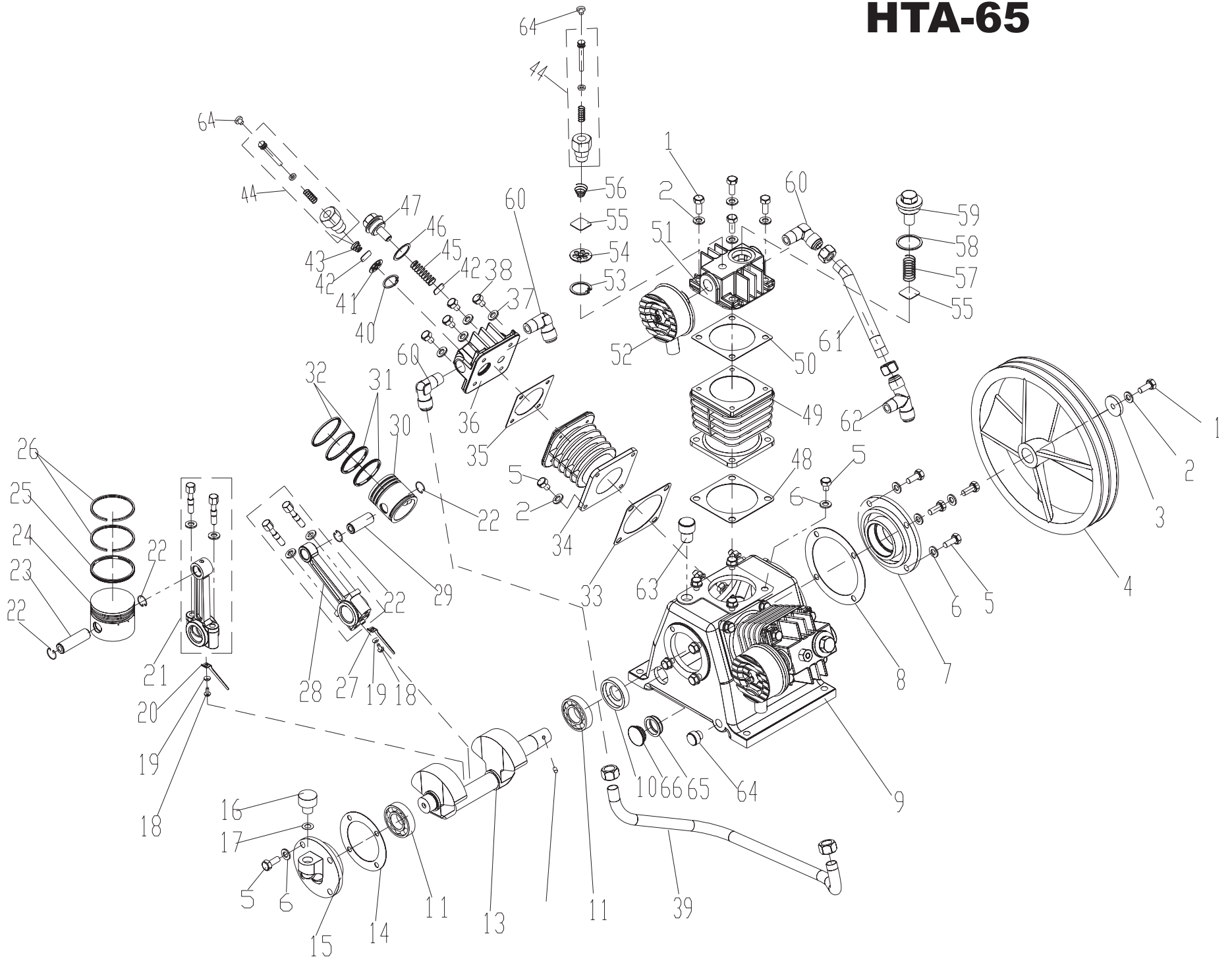
5750 DONAHUE STREET, MONTREAL, QUEBEC. H4S 1C1  
TEL.: 514-336-3820, 800-390-0140 FAX: 514-745-1764  
www.airtekltd.com E-MAIL info@airtekltd.com

## Fu Sheng

### HTA-65 Pump



# HTA-65



| ITEM | DESCRIPTION                          | QTY | PART NO.          |
|------|--------------------------------------|-----|-------------------|
| 1    | BOLT                                 | 9   | 91501-1308025-8.8 |
| 2    | WASHER                               | 21  | 92522-130800      |
| 3    | COMPRESSOR PULLEY WASHER             | 1   | 70112-76210       |
| 4    | COMPRESSOR PULLEY                    | 1   | 70132-76010       |
| 5    | BOLT                                 | 20  | -                 |
| 6    | WASHER                               | 8   | 92521-190800      |
| 7    | FRONT BEARING COVER                  | 1   | 70122-57030       |
| 8    | FRONT BEARING COVER PACKING          | 1   | 70122-57950       |
| 9    | CRANKCASE                            | 1   | 70172-57010       |
| 10   | FRONT OIL SEAL                       | 1   | 70122-57080       |
| 11   | BEARING                              | 2   | 93501-6205        |
| 12   | COMPRESSOR PULLEY PIN                | 1   | 70112-56060       |
| 13   | CRANKSHAFT                           | 1   | 70132-56010       |
| 14   | REAR BEARING COVER PACKING           | 1   | 70122-57960       |
| 15   | REAR BEARING COVER                   | 1   | 70122-57060       |
| 16   | AIR STRAINER ASS'Y                   | 1   | 70103-57600       |
| 17   | O-RING                               | 1   | 93601-810016      |
| 18   | BOLT                                 | 3   | -                 |
| 19   | SPRING WASHER                        | 3   | 92522-130400      |
| 20   | ONE STAGE OIL SPLASH DIPPER          | 1   | 70132-61290       |
| 21   | ONE STAGE CONNECTING ROD ASSEMBLY    | 2   | 70112-61200       |
| 22   | PISTON LOCK PIN                      | 6   | 70112-61070       |
| 23   | ONE STAGE PISTON PIN                 | 4   | 70112-61120       |
| 24   | ONE STAGE PISTON                     | 2   | 70110F81-61012    |
| 25   | ONE STAGE OIL CONTROL RING           | 2   | 70112-61051       |
| 26   | ONE STAGE COMPRESSION RING           | 4   | 70112-61031       |
| 27   | OIL SPLASH DIPPER                    | 2   | 70122-61282       |
| 28   | TWO STAGE CONNECTING ROD ASSEMBLY    | 1   | 70182-62200       |
| 29   | TWO STAGE PISTON PIN                 | 1   | 70172-62120       |
| 30   | TWO STAGE PISTON                     | 1   | 70172-62010       |
| 31   | TWO STAGE COMPRESSION RING           | 2   | 70111-61030       |
| 32   | TWO STAGE OIL CONTROL RING           | 2   | 70111-61050       |
| 33   | TWO STAGE CYLINDER CRANKCASE PACKING | 1   | 70112-51610       |
| 34   | TWO STAGE CYLINDER                   | 1   | 70172-52010       |
| 35   | TWO STAGE CYLINDER HEAD PACKING      | 1   | 70111-11612       |
| 36   | TWO STAGE CYLINDER HEAD              | 1   | 70172-12010       |
| 37   | SPRING WASHER                        | 4   | 92522-130600      |
| 38   | BOLT                                 | 4   | 91501-1306025-8.8 |
| 39   | OUTLET PIPE                          | 1   | 70172-87300       |
| 40   | LOCK RING                            | 1   | 93610-130225      |
| 41   | TWO STAGE INLET VALVE RECEIVER       | 1   | 70111-31020       |
| 42   | INLET VALVE PLATE                    | 2   | 70111-31030       |
| 43   | TWO STAGE INLET VALVE SPRING         | 1   | 70172-32070       |
| 44   | AUTO UNLOADING ASS'Y                 | 3   | 70112-11201       |
| 45   | TWO STAGE OUTLET VALVE SPRING        | 1   | 70172-42070       |
| 46   | OUTLET VALVE PUSH COVER PACKING      | 1   | 70111-11461       |
| 47   | OUTLET VALVE PUSH COVER              | 1   | 70111-11450       |
| 48   | CYLINDER CRANKCASE PACKING           | 3   | 70112-51610       |
| 49   | ONE STAGE CYLINDER                   | 2   | 70112-51010       |
| 50   | ONE STAGE CYLINDER HEAD PACKING      | 2   | 70112-11612       |
| 51   | ONE STAGE CYLINDER HEAD              | 2   | 70112-11010       |
| 52   | AIR STRAINER SET                     | 2   | 70111-66001       |
| 53   | LOCK RING                            | 2   | 93610-130232      |
| 54   | ONE STAGE INLET VALVE RECEIVER       | 2   | 70112-31020       |
| 55   | ONE STAGE PLATE                      | 4   | 70112-31030       |
| 56   | ONE STAGE INLET VALVE SPRING         | 2   | 70112-31070       |

| ITEM | DESCRIPTION                               | QTY | PART NO.       |
|------|---|-----|----------------|
| 57   | ONE STAGE OUTLET VALVE SPRING             | 2   | 70112-41070    |
| 58   | ONE STAGE OUTLET VALVE PUSH COVER PACKING | 2   | 70112-11461    |
| 59   | OUTLET VALVE PUSH COVER                   | 2   | 70112-11450    |
| 60   | OUTLET PIPE JOINT A                       | 3   | 70120FA1-87011 |
| 61   | OUTLET PIPE                               | 1   | 70132-87100    |
| 62   | OUTLET PIPE JOINT C                       | 1   | 70130FA1-87031 |
| 63   | OIL CAP                                   | 1   | 70101-57190    |
| 64   | SCREW PLUG                                | 4   | 90112-100202   |
| 65   | O-RING                                    | 1   | 93602-8126026  |
| 66   | GAUGE SET                                 | 1   | -              |