



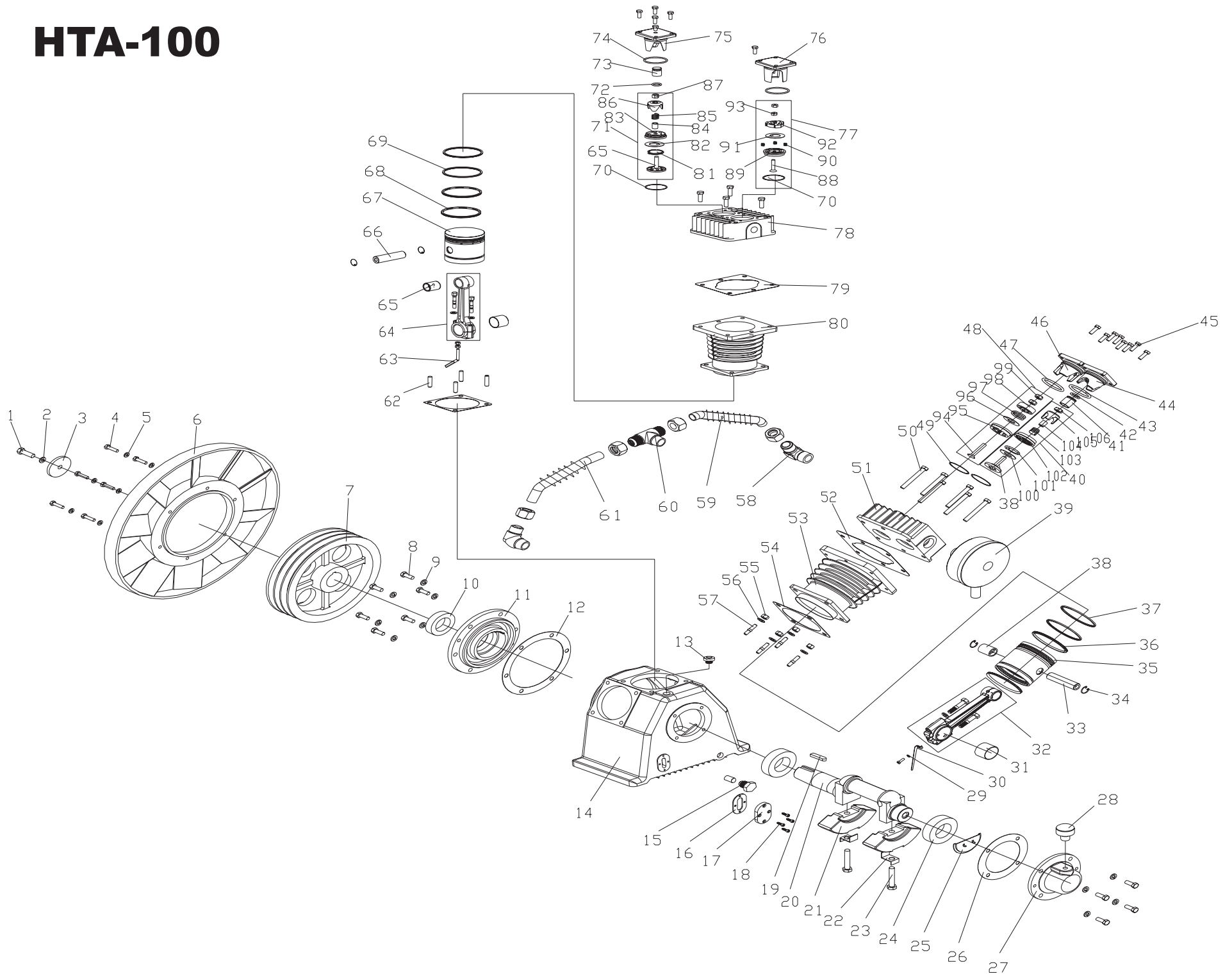
5750 DONAHUE STREET, MONTREAL, QUEBEC. H4S 1C1
TEL.: 514-336-3820, 800-390-0140 FAX: 514-745-1764
www.airtekltd.com E-MAIL info@airtekltd.com

Fu Sheng

HTA-100 Pump



HTA-100



ITEM	DESCRIPTION	QTY	PART NO.
1	BOLT M12*40	1	91501-1312040-8.8
2	SPRING WASHER	1	92522-131200
3	COMPRESSOR PULLEY WASHER	1	70124-76210
4	BOLT M8*30	6	91501-2308030
5	SPRING WASHER	6	92522-130800
6	FAN	1	70124-76310
7	COMPRESSOR PULLEY	1	70134-76011
8	BOLT M10*25	10	91501-1310025-8.8
9	COPPER WASHER	10	92521-191000
10	OIL SEAL	1	70134-57080
11	FRONT BEARING COVER	1	70134-57031
12	FRONT BEARING COVER PACKING	1	70124-57950
13	CRANKCASE OIL CAP	1	70123-57190
14	CRANKCASE	1	70174-57010
15	SCREW PLUG	1	90112-100404
16	GAUGE PACKING	1	70124-57730
17	oil level gauge assembly	1	70124-57700
18	BOLT	7	-
19	PIN	1	70134-56060
20	CRANKSHAFT	1	70174-56010
21	CRANKSHAFT BALANCE WEIGHT	2	70134-56030
22	WASHER	2	70124-56830
23	BOLT	2	70124-56810
24	BEARING	2	93502-32210
25	OIL BAFFLE PLATE	1	70134-57590
26	REAR BEARING COVER PACKING	1	70134-57960
27	REAR BEARING COVER	1	70134-57061
28	breather assembly	1	70124-57601
29	SPRING WASHER	4	92522-130500
30	OIL SPLASH DIPPER	2	70134-61281
31	CONNECTING ROD BEARING SHELL	6	70124-61090
32	1ST STAGE CONNECTING ROD ASSEMBLY	2	70124-61201
33	1ST STAGE PISTON PIN	2	70124-61120
34	1ST STAGE PISTON PIN LOCKING RING	6	70124-61070
35	1ST STAGE PISTON	2	70124-61011
36	1ST STAGE OIL CONTROL RING	4	70124-61050
37	1ST STAGE COMPRESSION RING	4	70124-61030
38	1st STAGE INLET VALVE RECEIVER	2	70124-31020
39	AIR STRAINER ASSEMBLY	1	70123-66000
40	1ST STAGE INLET VALVE SET	2	70124-31000
41	1ST STAGE UNLOADING PISTON	2	70124-11220
42	O-RING	2	93601-870021
43	O-RING	2	93602-870055
44	1ST STAGE INLET VALVE COVER	2	70124-11150
45	BOLT M8*25	24	91501-1308025-8.8
46	1ST STAGE OUTLET VALVE PUSH COVER	2	70124-11450
47	O-RING	2	93602-810055
48	1ST STAGE OUTLET VALVE SET	2	70124-41000
49	1ST STAGE VALVE SEAT WASHER	4	70124-11110
50	BOLT M10*80	18	91501-1110080-5618
51	1ST STAGE CYLINDER HEAD	2	70124-11010
52	1ST STAGE CYLINDER HEAD PACKING	2	70124-11612
53	1ST STAGE CYLINDER	2	70124-51011
54	CYLINDER CRANKCASE PACKING	3	70124-51610
55	NUT M10	12	92501-231000
56	SPRING WASHER	12	92522-131000

ITEM	DESCRIPTION	QTY	PART NO.
57	BOLT	8	70123-51810
58	PIPE JOINT A	2	701210A1-87011
59	OUTLET PIPE ASSEMBLY	1	70134-87101
60	PIPE JOINT B	1	701310B1-87021
61	OUTLET PIPE ASSEMBLY	1	70174-87300
62	CYLINDER-CRANKCASE BOLT	4	70174-51810
63	OIL SPLASH DIPPER	1	70134-61290
64	2ND STAGE CONNECTING ROD ASSEMBLY	1	70174-62202
65	2nd STAGE INLET VALVE RECEIVER	1	70173-32020
66	2ND STAGE PISTON PIN	1	70174-62120
67	2ND STAGE PISTON	1	70174-62010-1
68	2ND STAGE OIL RING	2	70123-61050
69	2ND STAGE COMPRESSION RING	3	70123-61030
70	2ND STAGE VALVE SEAT WASHER	2	70123-11110
71	2ND STAGE INLET VALVE ASSEMBLY	1	70173-32000
72	O-RING	1	93601-870020
73	2ND STAGE UNLOADING PISTON	1	70123-11220
74	O-RING	2	93602-870040
75	2ND STAGE INLET VALVE PUSH COVER	1	70123-11150
76	2ND STAGE OUTLET VALVE PUSH COVER	2	70123-11450
77	2ND STAGE OUTLET VALVE SET	1	70123-41000
78	2ND STAGE CYLINDER HEAD	1	-
79	2ND STAGE CYLINDER HEAD PACKING	1	70123-11612
80	2ND STAGE CYLINDER	1	70174-52011
81	2nd STAGE INLET VALVE SPRING	1	70123-31070
82	2nd STAGE INLET VALVE PLATE	1	70123-31030
83	2nd STAGE INLET VALVE SEAT	1	70123-31010
84	2nd STAGE UNLOAD FORK GUIDE	1	70123-31090
85	2nd STAGE UNLOADING PISTON O-RING	1	70123-11230
86	2nd STAGE UNLOAD FORK	1	70123-31080
87	LOCK NUT	1	92518-230800
	BOLT	1	70123-41810
89	2nd OUTLET VALVE RECEIVER	1	70123-41011
90	2nd STAGE INLET VALVE SPRING	3	70123-41070
91	2nd STAGE INLET VALVE PLATE	1	70123-31030
92	2nd OUTLET VALVE RECEIVER	1	70123-41020
93	LOCK NUT	1	92502-230800
94	BOLT	2	-
95	1st STAGE OUTLET VALVE SEAT	2	70124-41011
96	1st STAGE PLATE	2	70124-31030
97	1st STAGE OUTLET VALVE SPRING	2	70124-41070
98	1st OUTLET VALVE RECEIVER	2	70124-41020
99	1st STAGE LOCK NUT	4	92501-231000
100	1st STAGE PLATE	2	50124-31030
101	1st STAGE INLET VALVE SPRING	2	70124-31070
102	1st STAGE INLET VALVE SEAT	2	70124-31010
103	1st STAGE UNLOAD SPRING	2	70124-11230
104	1st STAGE UNLOAD FORK GUIDE	2	70124-31090
105	1st STAGE UNLOAD FORK	2	70124-31080
106	LOCK NUT	2	92518-231000