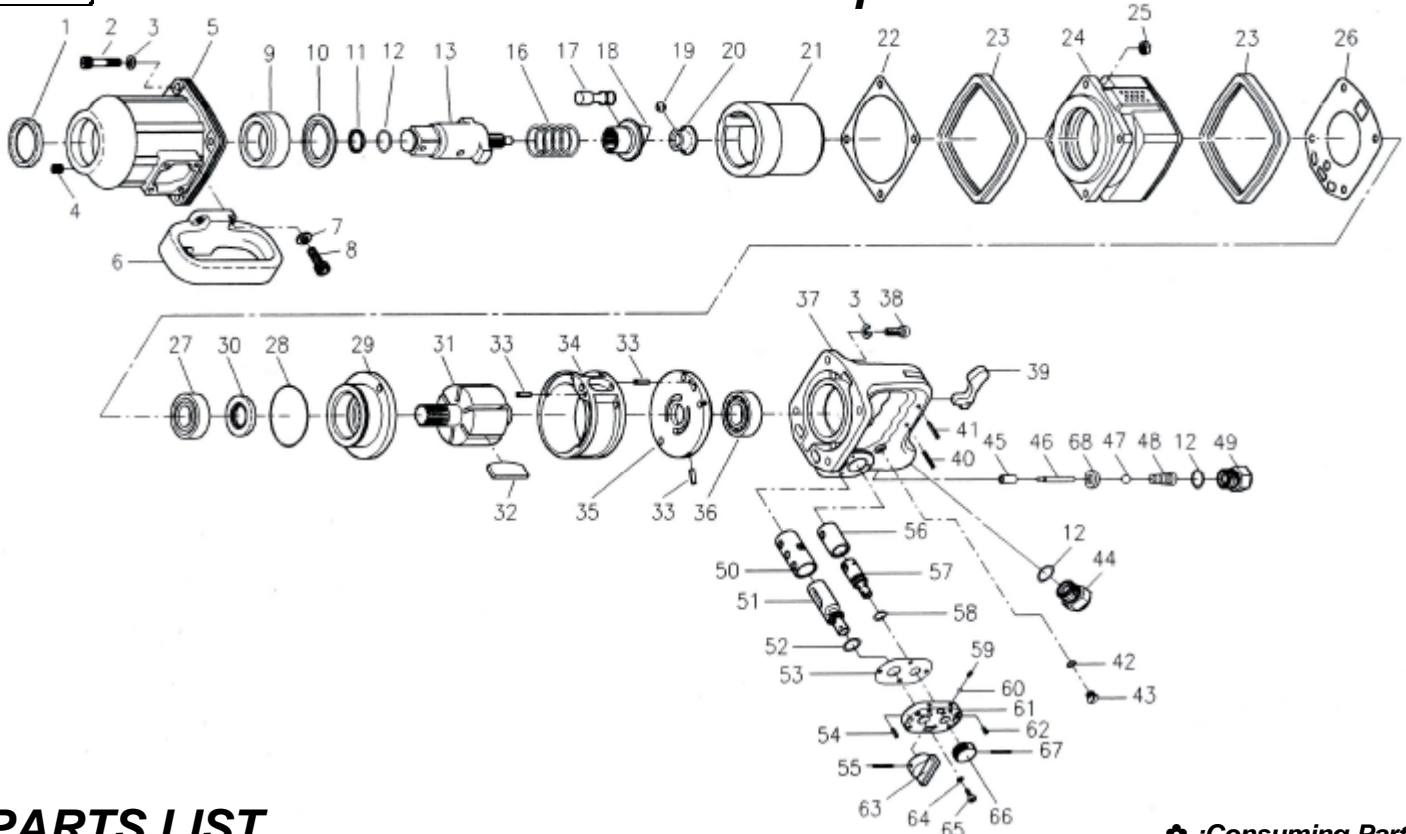


# 吉生 GISON

## GW-42TL 1" Professional Air Impact Wrench



### PARTS LIST

⚙️ : Consuming Part

Item No.	Part No.	Description	Qty.	Item No.	Part No.	Description	Qty.
1	42TL01	Oil Seal	1	37	42TL37	Handle Frame	1
2	42TL02	Cap Screw	8	38	42TL38	Cap Screw	4
3	42TL03	Spring Washer	8	39	42TL39	Trigger	1
4	42TL04	Plug	1	40	42TL40	Spring Pin	1
5	42TL05	Hammer Case	1	41	42TL41	Spring Pin	1
6	42TL06	D-Type Handle	1	42	42TL42	O-Ring	1
7	42TL07	Spring Washer	4	43	42TL43	Oil Chamber Screw	1
8	42TL08	Cap Screw	4	44	42TL44	Throttle Plug	1
9	42TL09	Anvil Bushing	1	45	42TL45	Bushing	1
10	42TL10	Washer	1	46	42TL46	Valve Stem	1
11	42TL11	Anvil Collar	1	47	42TL47	Steel Ball	1
12	42TL12	O-Ring	1	48	42TL48	Spring	1
13	42TL13A	2" Anvil	1	49	42TL49A	Air Inlet (1/2"PF)	1
	42TL13B	8" Anvil			42TL49B	Air Inlet (1/2"PT)	
					42TL49C	Air Inlet (1/2"NPT)	
16	42TL16	Spring	1	50	42TL50	Reverse Valve Bushing	1
17	42TL17	Hammer Pin	2	51	42TL51	Reverse Valve	1
18	42TL18	Cam	1	52	42TL52	O-Ring	1
19	42TL19	Steel Ball	1	53	42TL53	Valve Packing	1
20	42TL20	Cam Foundation	1	54	42TL54	Spring Pin	1
21	42TL21	Hammer Cage	1	55	42TL55	Spring Pin	1
22	42TL22	Front Gasket	1	56	42TL56	Regulator Bushing	1
23	42TL23	Housing Band	2	57	42TL57	Regulator	1
24	42TL24	Motor Housing	1	58	42TL58	O-Ring	1
25	42TL25	Lock Nut	4	59	42TL59	Spring	2
26	42TL26	Rear Gasket	1	60	42TL60	Steel Ball	2
27	42TL27	Ball	1	61	42TL61	Valve Cap	1
28	42TL28	O-Ring	1	62	42TL62	Spring Pin	1
29	42TL29	Front End Plate	1	63	42TL63	Reverse Lever	1
30	42TL30	Oil Seal	1	64	42TL64	Spring Washer	4
31	42TL31	Rotor	1	65	42TL65	Cap Screw	4
32	42TL32	Rotor Blade	5	66	42TL66	Regulator Knob	1
33	42TL33	Spring Pin	3	67	42TL67	Spring Pin	1
34	42TL34	Cylinder	1	68	42TL68	Bushing	1
35	42TL35	Rear End Plate	1				
36	42TL36A	Ball Bearing	1				