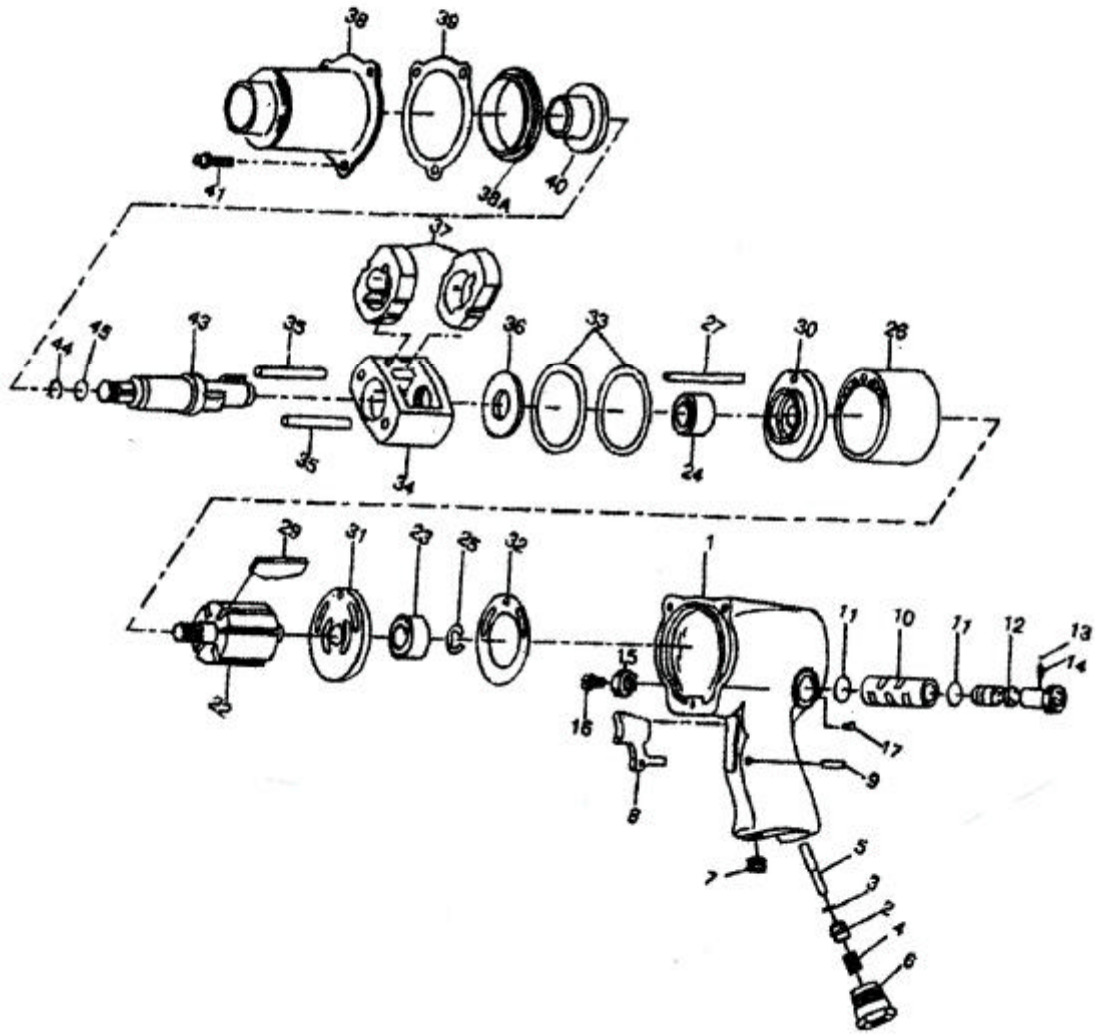


吉生 GISON

GW-19IR 1/2" SQ.DR IMPACT WRENCH



PARTS LIST

✳ :Consuming Part

Item No.	INDEX No.	Description	Qty.	Item No.	Part No.	Description	Qty.
1	853-1	Motor Housing Assembly	1	27	853-27	Cylinder Dowel	1
2	853-2	Throttle Valve Assembly	1	28	853-28		
3	853-3	Throttle Valve Face	1	29	853-29	Vane Packet	6
4	853-4	Throttle Valve Spring	1	30	853-30	Front End Plate	1
5	853-5	Throttle Valve Stem	1	31	853-31	Rear End Plate	1
6	853-6	Air Strainer Assembly	1	32	853-32	End Plate Gasket	1
7	853-7	Oil Chamber Plug	1	33	853-33	Motor Clamp Washer	2
8	853-8	Trigger	1	34	853-34	Hammer Frame Assembly	1
9	853-9	Trigger Pin	1	35	853-35	Hammer Pin	2
10	853-10	Reverss Valve Bushing	1	36	853-36	Hammer Frame Rear Washer	1
11	853-11	Reverss Valve Bushing Seal	2	37	853-37	Hammer	2
12	853-12	Reverss Valve	1	38	853-38	Hammer Case Assembly	1
13	853-13	Reverss Valve Detent Ball	1	38A	853-38A	Hammer Case Pilot	1
14	853-14	Reverss Valve Detent Spring	1	39	853-39	Hammer Case Gasket	1
15	853-15	Reverss Valve Knob	1	40	853-40	Hammer Case Bushing	1
16	853-16	Reverss Valve Knob Screw	1	41	853-41	Hammer Case Cap Screw	3
17	853-17	Grease Fitting	1	43A	853-43A	Standard Anril	1
22	853-22	Rotor	1	43b	853-43B	853-2 W/2" Extended Anril	1
23	853-23	Rear Rotor Bearing	1	44	853-44	Socket Retainer	1
24	853-24	Front Rotor Bearing	1	45	853-45	Retainer O-Ring	1
25	853-25	Rear Rotor Beating Retainer	1	46	853-46	Tune-up kit (includes illustrated parts 3.4.11(2).26.29.32.39.44.45 and nonillustrated part oiler Felt)	
26	853-26	Cylinder	1				