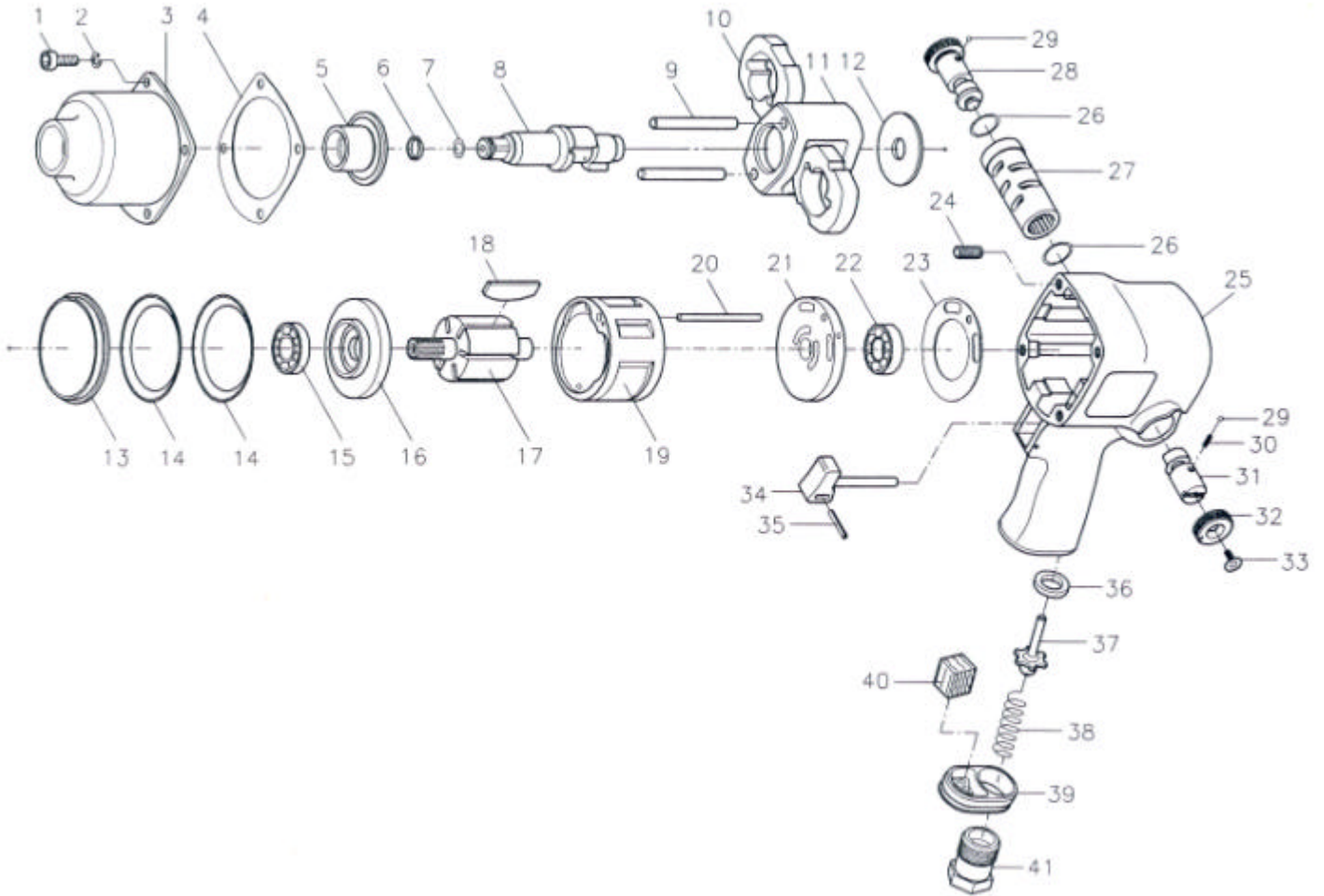




GISON Pneumatic Tools

GW-19B 1/2" Professional Air Impact Wrench



PARTS LIST

✧ : Consuming Part

Item No.	Part No.	Description	Qty.	Item No.	Part No.	Description	Qty.
1	19B001	Cap Screw	4	22	19B022	Ball Bearing	1
2	19B002	Spring Washer	4	23	19B023	Rear Gasket	1
3	19B003	Hammer Case	1	24	19B024	Insert Recoil	4
4	19B004	Front Gasket	1	25	19B025	Motor Housing	1
5	19B005	Anvil Bushing	1	26	19B026	O-Ring	2
6	19B006	Anvil Collar	1	27	19B027	Valve Sleeve	1
7	19B007	O-Ring	1	28	19B028	Forward Regulator	1
8	19B008A	Anvil	1	29	19B029	Steel Ball	2
	19B008B	2" Anvil		30	19B030	Spring	1
9	19B009	Hammer Pin	2	31	19B031	Reverse Regulator	1
10	19B010	Hammer	2	32	19B032	Regulator Knob	1
11	19B011	Hammer Cage	1	33	19B033	Cap Screw	1
12	19B012	Rear Washer	1	34	19B034	Trigger	1
13	19B013	Hammer Case Pilot	1	35	19B035	Spring Pin	1
14	19B014	Motor Clamp Washer	2	36	19B036	Bushing	1
15	19B015	Ball Bearing	1	37	19B037	Valve Stem	1
16	19B016	Front End Plate	1	38	19B038	Spring	1
17	19B017	Rotor	1	39	19B039	Exhaust Deflector	1
18	19B018	Rotor Blade	6	40	19B040	Muffler	1
19	19B019	Cylinder	1	41	19B041A	Air Inlet (1/4" PF)	1
20	19B020	Pin	1		19B041B	Air Inlet (1/4" PT)	
21	19B021	Rear End Plate	1		19B041C	Air Inlet (1/4" NPT)	