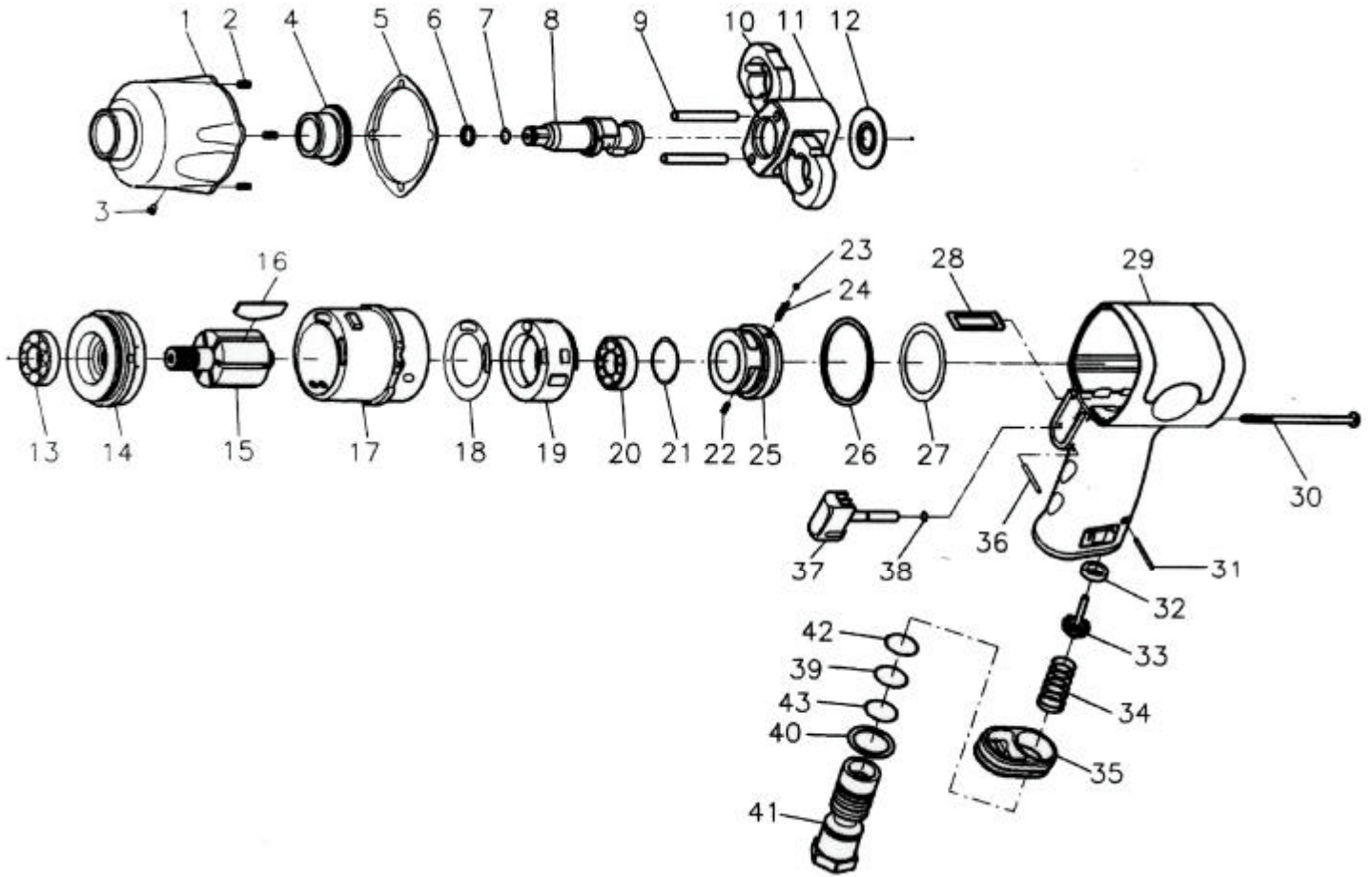




# GISON Pneumatic Tools

## GW-12F 3/8" Heavy Duty Impact Wrench



### PARTS LIST

✳ : Consuming Part

Item No.	Part No.	Description	Qty.	Item No.	Part No.	Description	Qty.
1	12F001	Hammer Case	1	22	12F022	Spring Pin	1
2	12F002	Inserts Recoil	4	23	12F023	Steel Ball	1
3	12F003	Grease Fitting	1	24	12F024	Spring	1
4	12F004	Anvil Bushing	1	25	12F025	Regulator	1
5	12F005	Front Gasket	1	26	12F026	Rear Gasket	1
6	12F006A	Anvil Collar (3/8" Square)	1	27	12F027	Washer	1
	12F006B	Anvil Collar (1/2" Square)		28	12F028	Air Channel Gasket	1
7	12F007A	O-Ring (3/8" Square)	1	29	12F029	Motor Housing	1
	12F007B	O-Ring (1/2" Square)		30	12F030	Screw	4
8	12F008A	Anvil (3/8" Square)	1	31	12F031	Spring Pin	1
	12F008B	Anvil (1/2" Square)		32	12F032	Bushing	1
9	12F009	Hammer Pin	2	33	12F033	Valve Stem	1
10	12F010	Hammer	2	34	12F034	Spring	1
11	12F011	Hammer Cage	1	35	12F035	Exhaust Deflector	1
12	12F012	Rear Washer	1	36	12F036	Spring Pin	1
13	12F013	Ball Bearing	1	37	12F037	Trigger	1
14	12F014	Front End Plate	1	38	12F038	O-Ring	1
15	12F015	Rotor	1	39	12F039	O-Ring	1
16	12F016	Rotor Blade	6	40	12F040	Washer	1
17	12F017	Cylinder	1	41	12F041A	Air Inlet (1/4" PT)	1
18	12F018	Valve Sleeve Gasket	1		12F041B	Air Inlet (1/4" NPT)	
19	12F019	Valve Sleeve	1	42	12F042	O-Ring	1
20	12F020	Ball Bearing	1	43	12F043	O-Ring	1
21	12F021	O-Ring	1				