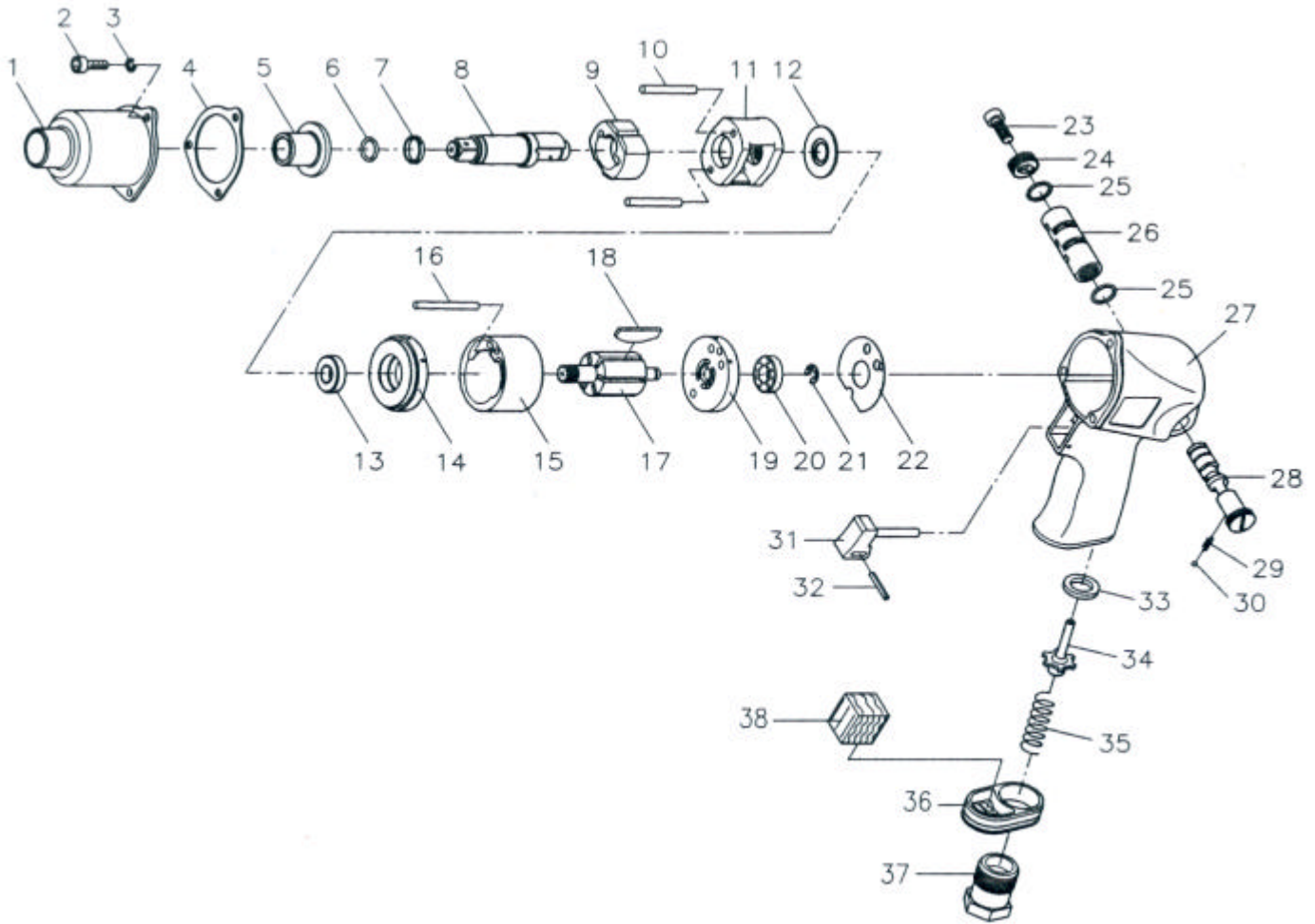


GISON Pneumatic Tools

GW-12C 3/8" & 1/2" Professional Air Impact Wrench



PARTS LIST

✦ :Consuming Part

Item No.	Part No.	Description	Qty.	Item No.	Part No.	Description	Qty.
1	12C001	Hammer Case	1	20	12C020	Ball Bearing	1
2	12C002	Cap Screw	3	21	12C021	Snap Ring	1
3	12C003	Spring Washer	3	22	12C022	Rear Gasket	1
4	12C004	Front Gasket	1	23	12C023	Cap Screw	1
5	12C005	Anvil Bushing	1	24	12C024	Regulator Knob	1
6	12C006A	O-Ring (3/8" Anvil)	1	25	12C025	O-Ring	2
	12C006B	O-Ring (1/2" Anvil)		26	12C026	Valve Sleeve	1
7	12C007A	Anvil Collar (3/8" Anvil)	1	27	12C027	Motor Housing	1
	12C007B	Anvil Collar (1/2" Anvil)		28	12C028	Reverse Valve	1
8	12C008A	Anvil (3/8")	1	29	12C029	Spring	1
	12C008B	Anvil (1/2")		30	12C030	Steel Ball	1
9	12C009	Hammer	1	31	12C031	Trigger	1
10	12C010	Hammer Pin	2	32	12C032	Spring Pin	1
11	12C011	Hammer Cage	1	33	12C033	Bushing	1
12	12C012	Rear Washer	1	34	12C034	Valve Stem	1
13	12C013	Ball Bearing	1	35	12C035	Spring	1
14	12C014	Front End Plate	1	36	12C036	Exhaust Deflector	1
15	12C015	Cylinder	1	37	12C037A	Air Inlet (1/4"PF)	1
16	12C016	Pin	1		12C037B	Air Inlet (1/4"PT)	
17	12C017	Rotor	1		12C037C	Air Inlet (1/4"NPT)	
18	12C018	Rotor Blade	6	38	12C038	Muffler	1
19	12C019	Rear End Plate	1				