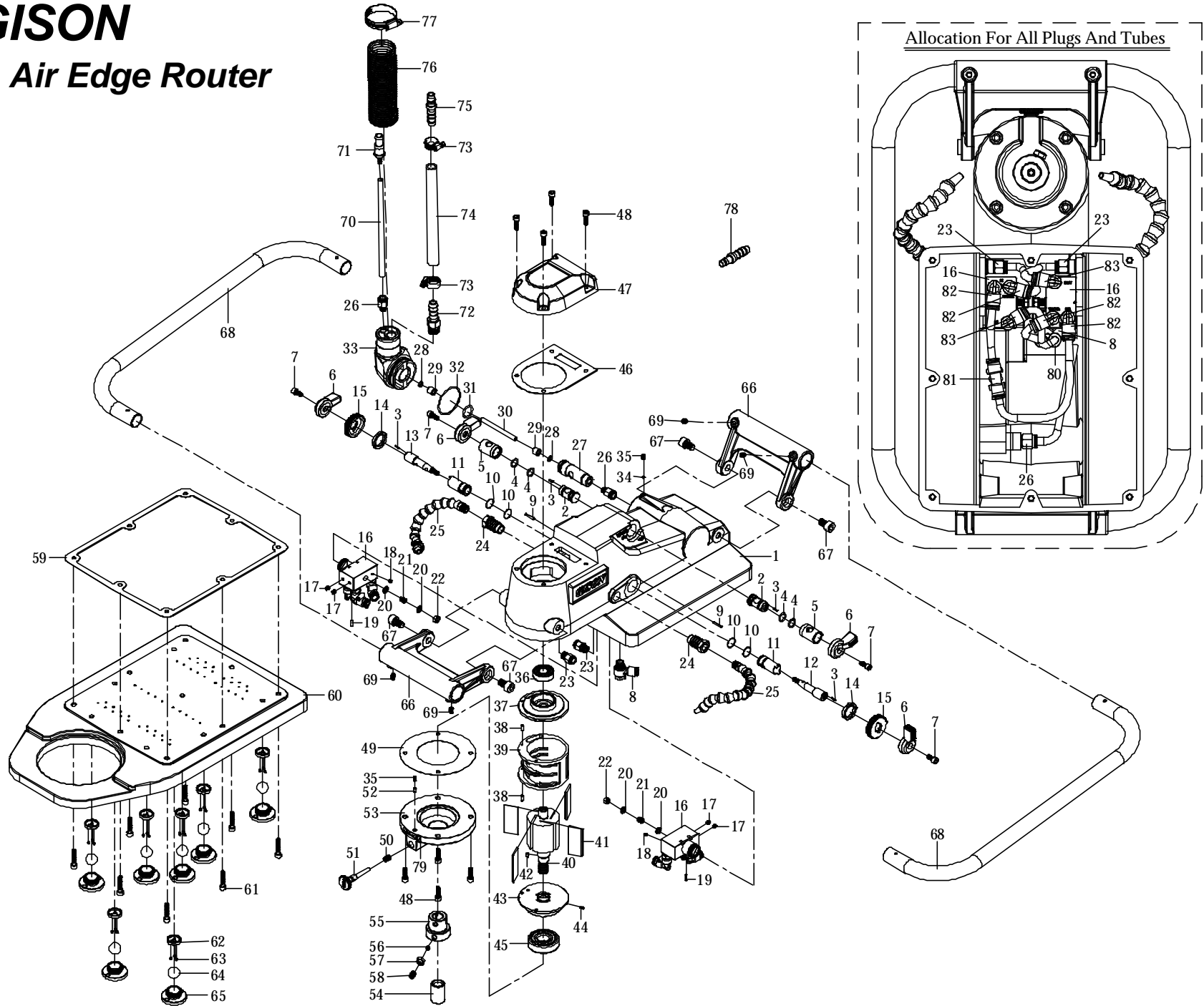


吉生 GISON

GPW-500 Air Edge Router



PARTSLIST

✿ : Consuming Part

Item No.	Part No.	Description	Qty.	Item No.	Part No.	Description	Qty.	Item No.	Part No.	Description	Qty.
1	50001000	Housing	1	30	50001012	Pipe	1	✿ 59	50006000	Gasket	1
2	50020000	Swiffing Valve	2	✿ 31	OR015	O-Ring	1	60	50005000	Bottom Board	1
3	SP035	Spring Pin	4	✿ 32	OR004	O-Ring	1	61	CAP023	Cap Screw	8
✿ 4	OR043	O-Ring	4	33	50004000	Tappet Seat	1	62	50005021	Ball Friction	7
5	50019000	Valve Bushing	2	34	380022	Steel Ball	1	✿ 63	50005022	Rolling Ball	21
6	50001200	Water Valve	4	35	MS008	Set Screw	2	✿ 64	50005010	Rolling Ball	7
7	CAP021	Hex. Screw	4	✿ 36	B6202LLU	Ball Bearing	1	65	50005020	Ball Friction Screw	7
8	50035000	H Type Plug	1	37	918012	Rear Plate	1	66	50002300	Handle	2
9	SP031	Spring Pin	2	38	SP023	Spring Pin	2	67	CAP027	Cap Screw	4
✿ 10	OR045	O-Ring	4	39	918013	Cylinder	1	68	50024000	Working Frame	2
11	50011000	En-Pressure Bushing	2	40	918014A	Rotor	1	69	MS012	Screw	4
12	5001000L	Shaft (L)	1	✿ 41	918015	Rotor Blade	4	✿ 70	50029000	A Step Air Hose	1
13	5001000R	Shaft (R)	1	42	KC005	Locking Key	1	71	5W019-1	Water Valve	1
14	50013020	Set Nut	2	43	918016W	Front Plate	1	72	50027000	Air Inlet Nozzle	1
15	50011010	En-Pressure Valve	2	44	SP014	Spring Pin	1	73	50039000	Betainer Ring	2
16	50013010	En-Pressure Regulator	2	✿ 45	B6304LLU	Ball Bearing	1	✿ 74	50037000	Air Hose	1
17	50013040	Tap	4	✿ 46	50002010	Gasket	1	75	50027010	Quick Joint (NPT18)	1
18	50013050	Tap	2	47	50002000	Air Inlet Deflector	1	76	50032000	Pipe Thread	1
19	SP012	Spring Pin	2	48	CAP003	Cap Screw	8	✿ 77	50038000	Retainer Ring	1
20	T6.5X13	Plat Washer T6.6X13	4	✿ 49	50003030	Fixing Bolt	1	78	50027020	Quick Joint (PT19)	1
✿ 21	S047	Spring Pin	2	✿ 50	S032	Spring	1	79	50003020	Name Plate	1
22	NS6	Fasten Nut	2	51	50003010	Tap Bolt	1	80	50025000	Labor-Saving Quick Joint, Y-Type	1
23	50021000	Quick Plug	2	52	P015	Pin	1				
24	50013000	Tube Screw	2	53	50003000	Bottom Deflector	1	81	50033000	Labor-Saving Quick Joint, T-Type	1
25	50040000	Flexible Tube	2	54	50003040	Spindle	1				
26	50022000	Quick Plug	2	55	50030000	Socket	1	82	50034000	Labor-Saving Quick Joint, L-Type	4
27	50001010	Swift Bushing	1	56	50003050	Gasket	1				
28	OR022	O-Ring	2	57	NH8	Adjust Nut	1	83	50036000	Labor-Saving Quick Joint, L-Type	2
29	50001011	Bushing	2	58	50003060	Screw	1				