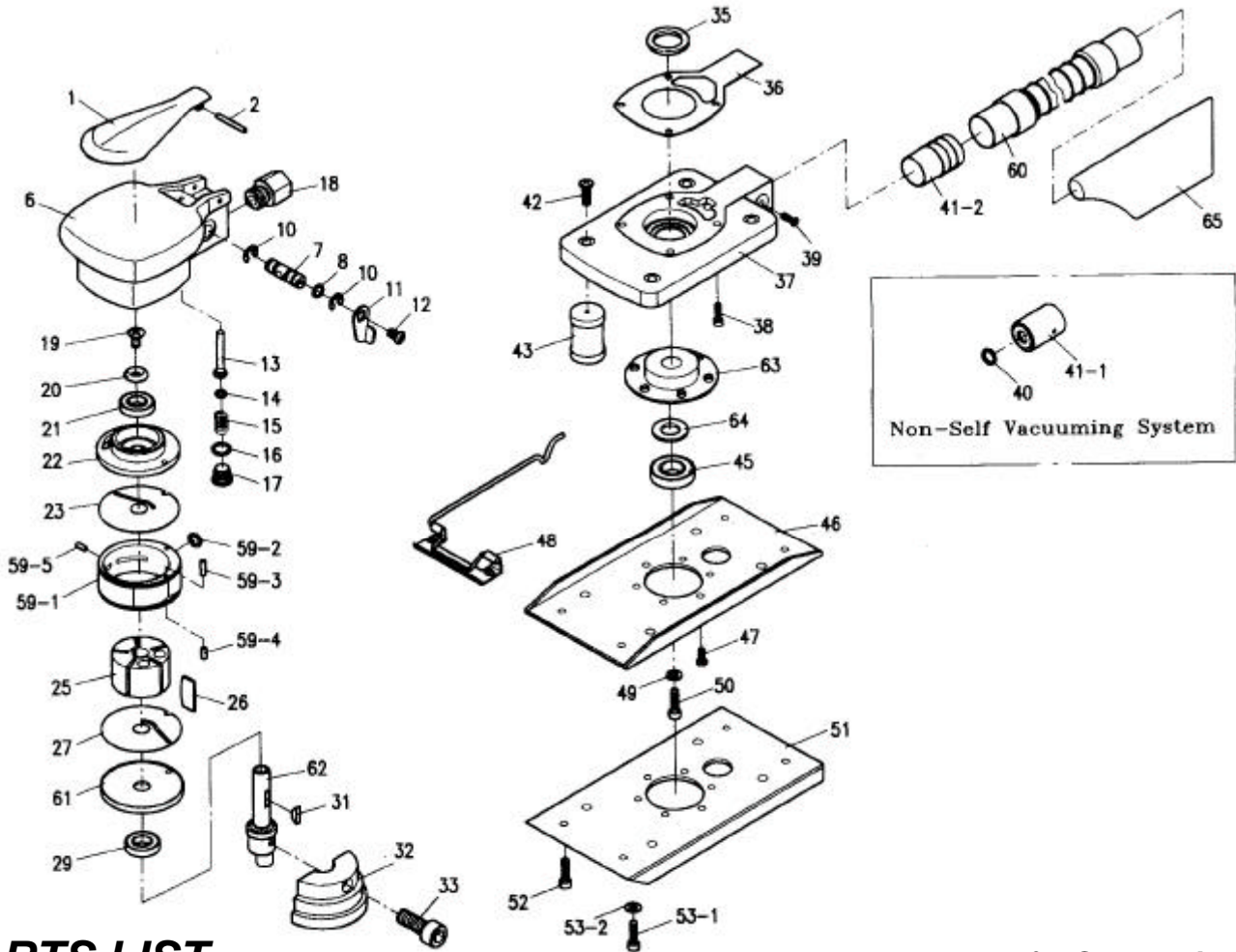


吉生 GISON

GP-939S Dual Action Sander

GP-939SD Dust Free Dual Action Sander



PARTS LIST

✿ : Consuming Part

Item No.	Part No.	Description	Qty.	Item No.	Part No.	Description	Qty.
01	939S01	Valve Lever	1	40	OR022	O-Ring (P7)	1
02	939S02	Spring Pin (∅3x25)	1	41-1	939S41-1	Silencer	1
06	939S06	Body	1	41-2	939SD41-2	Ejector (GP-939SD)	
07	939S07	Regulator	1	42	939S42	Screw (M5x10)	1
08	OR029	O-Ring (P4)	2	43	939S43	Support	1
10	939S10	Retaining Ring (E7)	2	45	939S45	Bearing (6202RS)	1
11	939S11	Regulator Lever	1	46	939S46	Shoe	1
12	939S12	Screw (M4x6)	1	47	939S47	Screw (M4x6)	1
13	939S13	Valve Pin	1	48	939S48	Clip	1
14	939S14	O-Ring (∅4x∅7)	1	49	939S49	Washer (∅5)	1
15	939S15	Valve Spring	1	50	939S50	Cap Screw (M5x10)	1
16	OR030	O-Ring (P8)	1	51	939S51-1	Clip Type Pad (Vinyl Face)	1
17	939S17	Valve Cap	1		939S51-2	Velcro Face Pad	
18	939S18	PS-Adapter	1		939SD51-1	Clip Type Pad (Vinyl Face) (GP-939SD)	
19	939S19	Screw (M6x10)	1		939SD51-2	Velcro Face Pad (GP-939SD)	
20	939S20	Conical Washer (M6)	1	52	939S52	Screw (M4x6)	1
21	B6000ZZ	Bearing (6000ZZ)	1	53-1	939S53-1	Screw (M5x10)	1
22	939S22	U-Bearing Case	1	53-2	939S53-2	Washer (M5)	1
23	939S23	U-Side Plate	1	Cylinder Set			
25	939S25	Rotor	1	59-1	939S59-1	Cylinder	(1)
26	939S26	Vane	5	59-2	OR002	O-Ring (P7)	(1)
27	939S27	L-Side Plate	1	59-3	939S59-3	Spring Pin (∅3x5)	(1)
29	B6000ZZ	Bearing (6000ZZ)	1	59-4	939S59-4	Spring Pin (∅3x5)	(1)
31	939S31	H/R Key (3x13)	1	59-5	939S59-5	Spring Pin (∅3x5)	(1)
32	939S32	L-Balancer	1	60	939SD60	Dust Hose Set (GP-939SD)	1 set
33	939S33	Cap Screw (M5x15)	1	61	939S61	L-Bearing Case	1
35	939S35	Felt Ring	1	62	939S62	Rotor Shaft	1
36	939S36	Body Packing	1	63	939S63	SPC-Bearing Case	1
37	939S37	Base Plate	1	64	939S64	Felt Ring (∅22)	1
38	939S38	Cap Screw (M4x15)	1	65	939SD65	Bag (GP-939SD)	1
39	939S39	Screw (M4x8)	1				