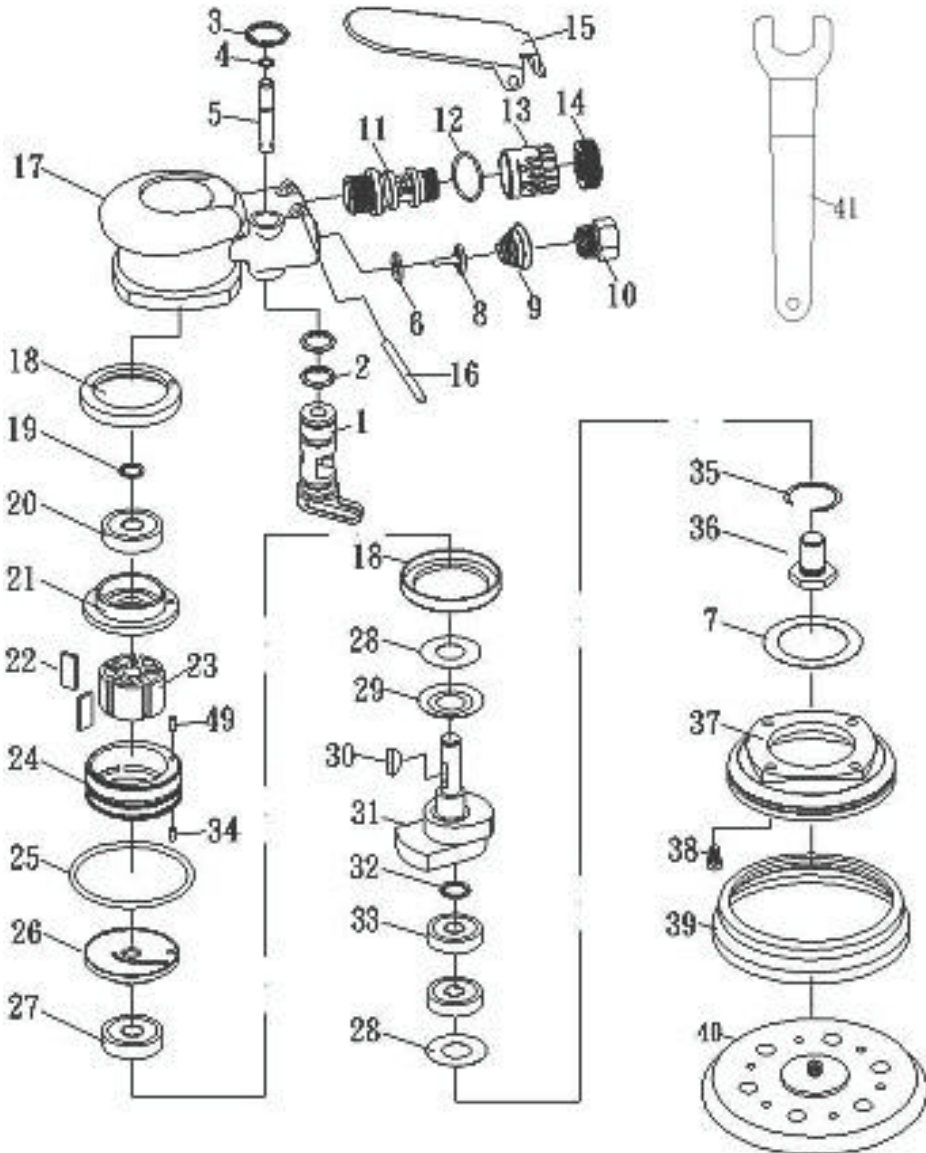




GISON Pneumatic Tools

GP-934E-N5/N6 5"/6" Non-Vacuum Sander



PARTS LIST

✳ : Consuming Part

No.	Part No.	Description	Qty.	No.	Part No.	Description	Qty.
1	934E01	Regulator	1	24	934E24	Cylinder	1
2	934E02	O-Ring	2	25	934E25	O-Ring	1
3	934E03	Snap Ring	1	26	934E26	Front Plate	1
4	934E04	O-Ring	1	27	934E27	Bearing (6002ZZ)	1
5	934E05	Valve Stem	1	28	934E28	Washer	2
6	934E06	Washer	1	29	934E29	Washer	1
7	934E07	Washer	1	30	934E30	Rotor Key	1
8	934E08	Valve	1	31	934E31a	Motor Shaft Balancer (5")	1
9	934E09	Spring	1		934E31b	Motor Shaft Balancer (6")	
10	934E10	Air Inlet	1	32	934E32	Snap Ring	1
11	934E11	Muffler Body	1	33	934E33a	Bearing (6001LU)	1
12	934E12	O-Ring	1		934E33b	Bearing (6001)	
13	934E13	Exhaust Sleeve	1	34	934E34	Pin (3*8)	1
14	934E14	Nut	1	35	934E35	Snap Ring	1
15	934E15	Lever	1	36	934E36	Shaft	1
16	934E16	Pin	1	37	934E37	Housing Cover	1
17	934E17	Housing	1	38	934E38	Screw	4
18	934E18	Rubber Bushing	2	39	934E39	Shroud (N5,N6)	1
19	934E19	Snap Ring	1	40	934E40a	Pad 5"	1
20	934E20	Bearing (6000ZZ)	1		934E40b	Pad 6"	
21	934E21	Rear Plate	1	41	934E41	Stop Spanner	1
22	934E22	Rotor Blade	5	49	934E49	Pin	1
23	934E23	Rotor	1				