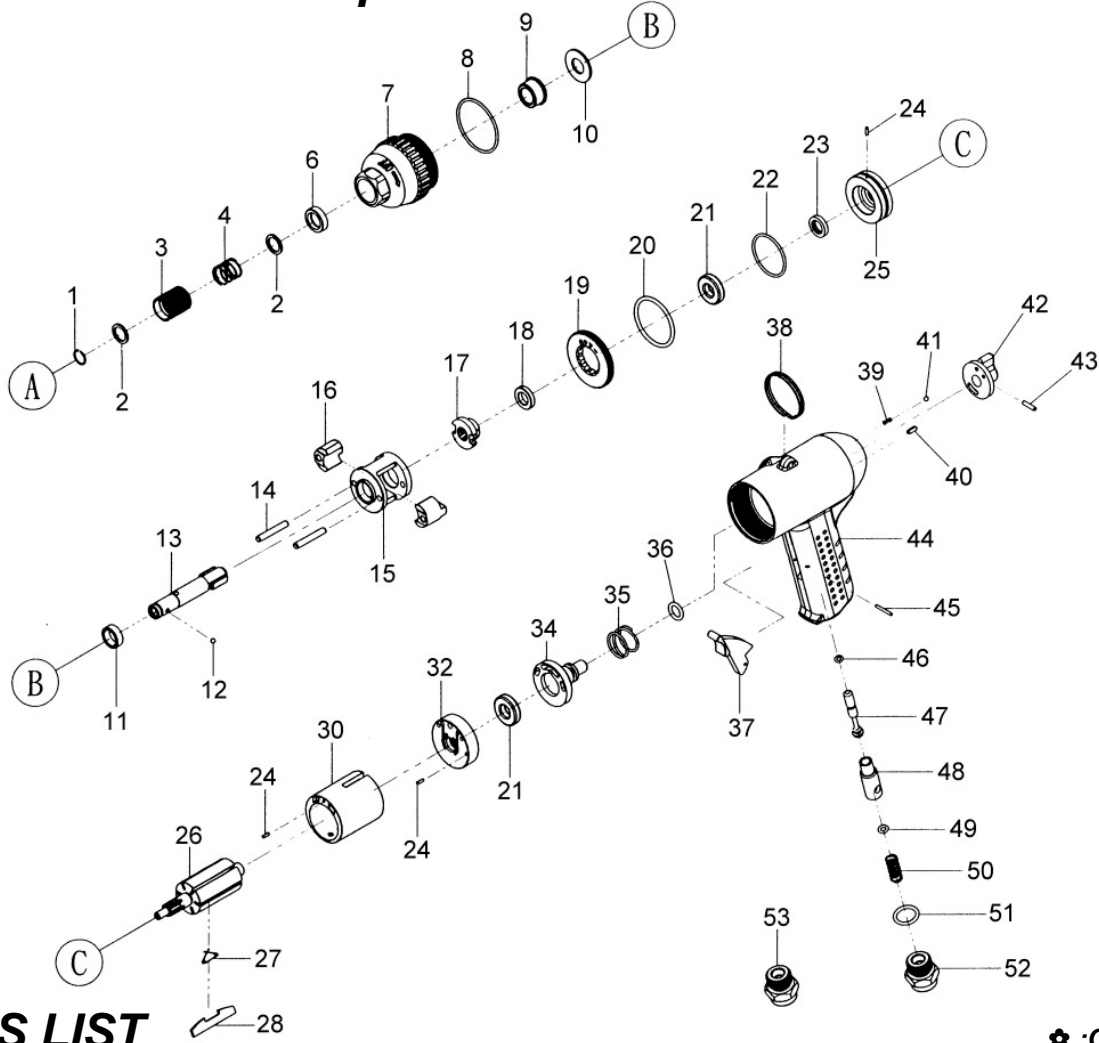




GISON Pneumatic Tools

GP-868P Air Impact Screw Driver



PARTS LIST

✳ : Consuming Part

Item No.	Part No.	Description	Qty.	Item No.	Part No.	Description	Qty.
1	868P01	Retaining Ring	1	27	868P27	Spring	6
2	868P02	Washer	2	28	868P28	Rotor Blade	6
3	868P03	Bushing	1	30	868P30	Cylinder	1
4	868P04	Spring	1	32	868P32	Rear Plate	1
6	868P06	Oil Seal	1	34	868P34	Adjuster	1
7	868P07	Front Cap	1	35	868P35	Spring	1
8	868P08	O-Ring (P37.82x1.78)	1	36	868P36	O-Ring (P9.2x2.5)	1
9	868P09	Bushing	1	37	868P37	Switch Lever	1
10	868P10	Washer	1	38	868P38	Hook	1
11	868P11	Ring	1	39	868P39	Spring	1
12	868P12	Steel Ball (ø1/8")	1	40	868P40	Pin (ø3x8)	1
13	868P13	Anvil	1	41	868P41	Iron Ball (ø1/8")	1
14	868P14	Pin (ø4.5x29)	2	42	868P42	Reverse Valve	1
15	868P15	Hammer Case	1	43	868P43	Pin (ø3x12)	1
16	868P16	Hammer	2	44	868P44	Handle	1
17	868P17	Hammer Cam	1	45	868P45	Pin (ø2x16)	1
18	868P18	Washer	1	46	868P46	O-Ring (P3.5x1.5)	1
19	868P19	Bolt	1	47	868P47	Valve Rod	1
20	868P20	O-Ring (P34.6x2.62)	1	48	868P48	Bushing	1
21	868P21	Ball Bearing (R6)	2	49	868P49	O-Ring (P4x1.9)	1
22	868P22	O-Ring (P29.87x1.8)	1	50	868P50	Spring	1
23	868P23	Oil Seal	1	51	868P51	O-Ring (P14x2.4)	1
24	868P24	Pin (ø2x6)	3	52	868P52	Air Inlet (18)	1
25	868P25	Front Plate	1	53	868P53	Air Inlet (19)	1
26	868P26	Rotor	1				