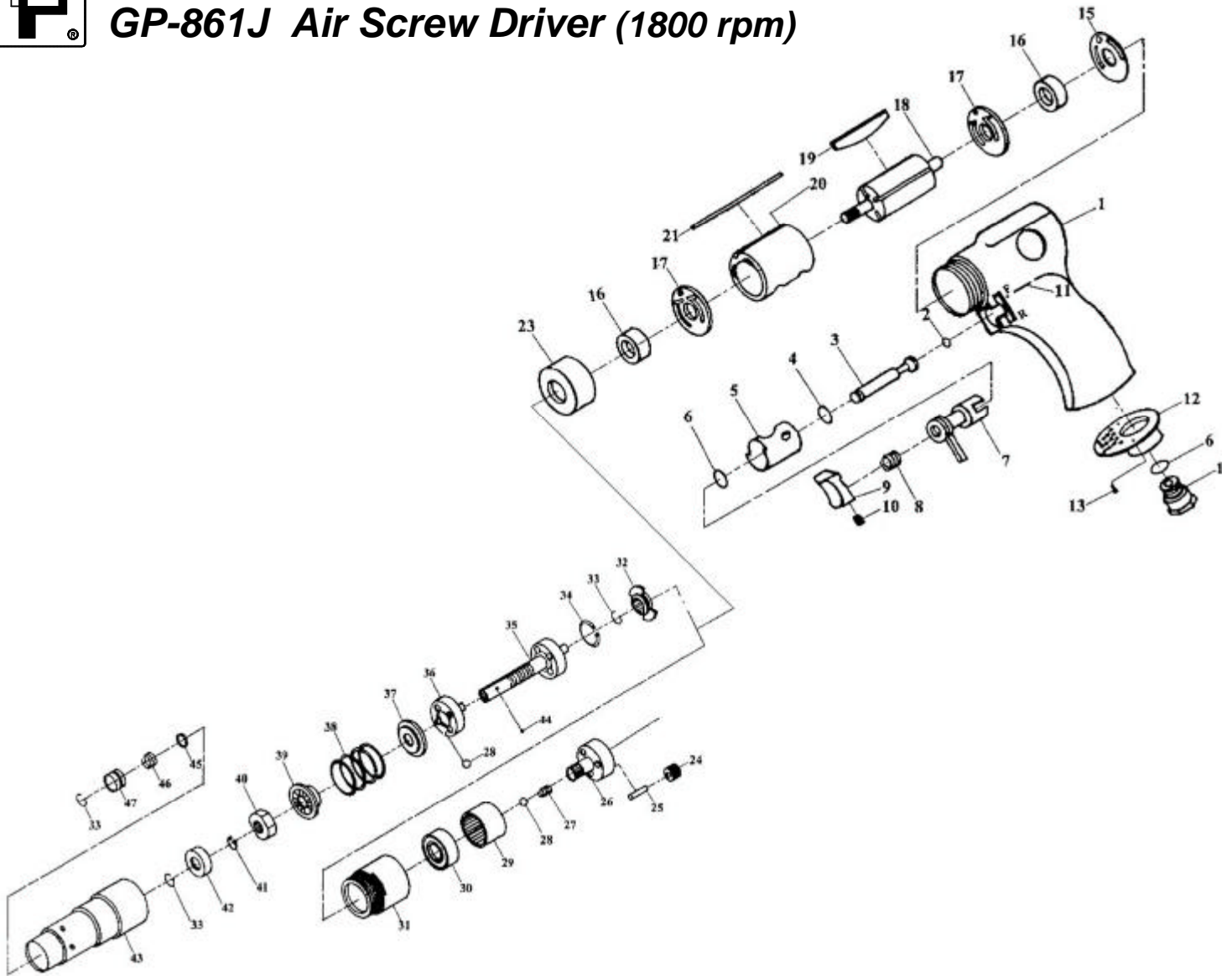




GISON Pneumatic Tools

GP-861J Air Screw Driver (1800 rpm)



PARTS LIST

✳ : Consuming Part

Item No.	Part No.	Description	Qty.	Item No.	Part No.	Description	Qty.
1	861J01	Motor Housing	1	25	861J25	Planet Gear Pin Set (Set Of 3)	3
2	861J02	O-Ring	1	26	861J26	Planet Gear Plate	1
3	861J03	Throttle Valve Stem	1	27	861J27	Spring	1
4	861J04	O-Ring	1	✳ 28	861J28	Steel Ball Set (Set of 5)	5
5	861J05	Reverse Valve Bushing	1	29	861J29	Gear Annular	1
6	861J06	O-Ring	2	30	861J30	Ball Bearing	1
7	861J07	Reverse Valve	1	31	861J31	Gear Case	1
8	861J08	Spring	1	✳ 32	861J32	Drive Cam	1
9	861J09	Trigger	1	33	861J33	Retaining Spring	3
10	861J10	Trigger Screw	1	34	861J34	Retaining Ring	1
11	861J11	Reverse Valve Pin	1	✳ 35	861J35	Anvil	1
12	861J12	Exhaust Deflector	1	✳ 36	861J36	Clutch Carrier	1
13	861J13	Exhaust Deflector Screw	2	37	861J37	Clutch Washer	1
14	861J14	Air Strainer Assembly	1	38	861J38	Clutch Spring	1
15	861J15	Gasket	1	39	861J39	Clutch Upper Washer	1
16	861J16	Rear Rotor Bearing	2	40	861J40	Adjust Nut	1
17	861J17	Read End Plate	2	41	861J41	Retaining Ring	1
✳ 18	861J18	Rotor	1	42	861J42	Ball Bearing	1
✳ 19	861J19	Vane Packet (Set Of 5)	5	43	861J43	Clutch Case Assembly	1
20	861J20	Cylinder	1	44	861J44	Locating Steel Ball	1
21	861J21	Cylinder Dowel	1	45	861J45	Thrust Ring	1
23	861J23	Bearing Plate	1	46	861J46	Retaining Sleeve Spring	1
✳ 24	861J24	Planet Gear Set (Set Of 3)	3	47	861J47	Retaining Sleeve	1