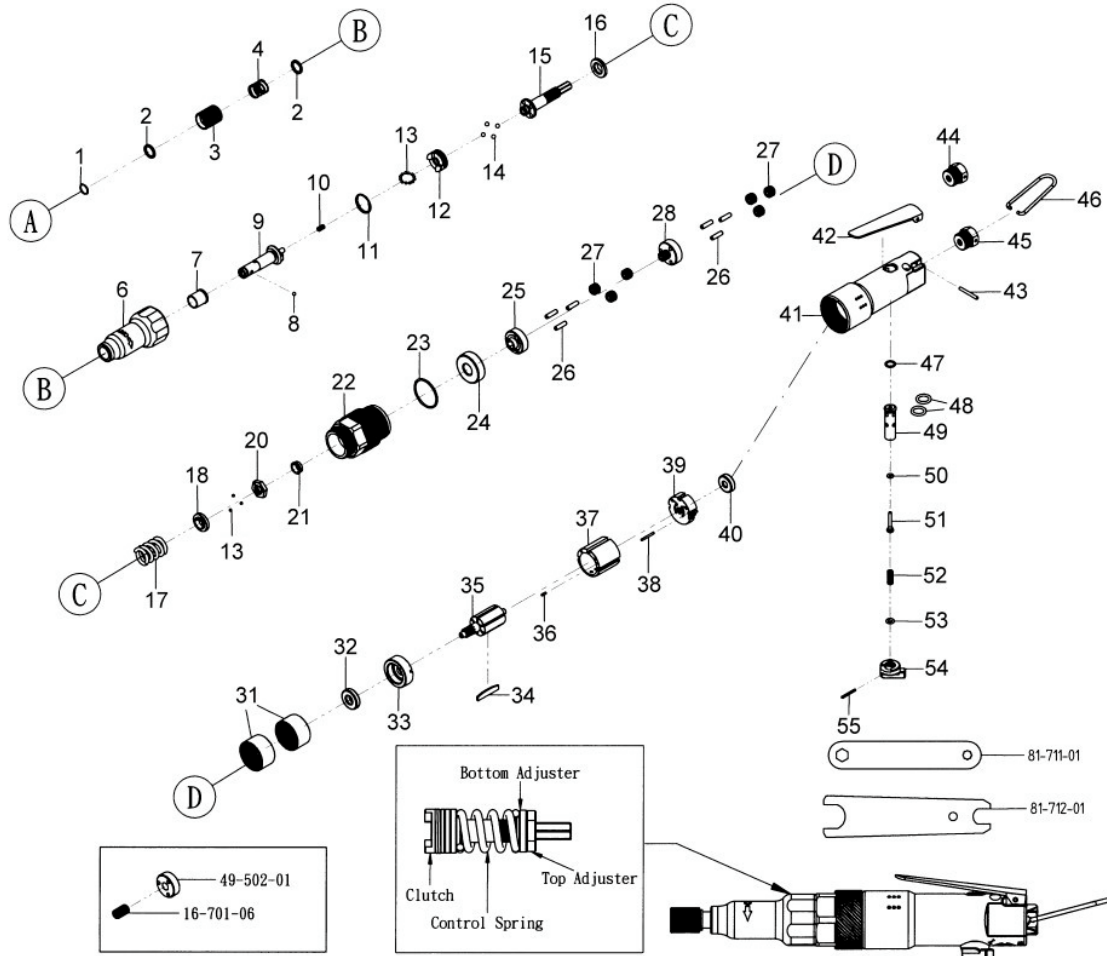




GISON Pneumatic Tools

GP-861H1 Air Screw Driver



PARTS LIST

✳ : Consuming Part

| Item No. | Part No. | Description | Qty. | Item No. | Part No. | Description | Qty. |
|----------|----------|-----------------------|------|----------|----------|--------------------|------|
| 1 | 861H101 | Retaining Ring | 1 | 31 | 861H131 | Gear Ring | 2 |
| 2 | 861H102 | Washer | 2 | 32 | 861H132 | Ball Bearing (R6) | 1 |
| 3 | 861H103 | Bushing | 1 | 33 | 861H133 | Front Plate | 1 |
| 4 | 861H104 | Spring | 1 | 34 | 861H134 | Rotor Blade | 6 |
| 6 | 861H106 | Front Cap | 1 | 35 | 861H135 | Rotor | 1 |
| 7 | 861H107 | Bushing | 1 | 36 | 861H136 | Pin (ø2 x 6) | 1 |
| 8 | 861H108 | Steel Ball (ø1/8") | 1 | 37 | 861H137 | Cylinder | 1 |
| 9 | 861H109 | Anvil | 1 | 38 | 861H138 | Pin (ø2 x 18) | 1 |
| 10 | 861H110 | Spring | 1 | 39 | 861H139 | Rear Plate | 1 |
| 11 | 861H111 | Retaining Ring | 1 | 40 | 861H140 | Ball Bearing (626) | 1 |
| 12 | 861H112 | Clutch | 1 | 41 | 861H141 | Handle | 1 |
| 13 | 861H113 | Steel Ball (ø2.5 mm) | 15 | 42 | 861H142 | Switch Lever | 1 |
| 14 | 861H114 | Steel Ball (ø4 mm) | 4 | 43 | 861H143 | Pin (ø3 x 26) | 1 |
| 15 | 861H115 | Driving Rod | 1 | 44 | 861H144 | Air Inlet (18) | 1 |
| 16 | 861H116 | Washer | 1 | 45 | 861H145 | Air Inlet (19) | 1 |
| 17 | 861H117 | Spring | 1 | 46 | 861H146 | Hook | 1 |
| 18 | 861H118 | Washer | 1 | 47 | 861H147 | O-Ring (P8 x 1.5) | 1 |
| 20 | 861H120 | Bolt | 1 | 48 | 861H148 | O-Ring (P11 x 2.4) | 2 |
| 21 | 861H121 | Bushing | 1 | 49 | 861H149 | Bushing | 1 |
| 22 | 861H122 | Bushing | 1 | 50 | 861H150 | O-Ring (P3 x 1.9) | 1 |
| 23 | 861H123 | O-Ring (P29.87 x 1.8) | 1 | 51 | 861H151 | Valve Rod | 1 |
| 24 | 861H124 | Ball Bearing (6201) | 1 | 52 | 861H152 | Spring | 1 |
| 25 | 861H125 | Gear Seat | 1 | 53 | 861H153 | O-Ring (P5 x 1.9) | 1 |
| 26 | 861H126 | Pin (ø4 x 15) | 6 | 54 | 861H154 | Reverse Valve | 1 |
| 27 | 861H127 | Gear | 6 | 55 | 861H155 | Pin (ø2 x 20) | 1 |
| 28 | 861H128 | Gear | 1 | | | | |