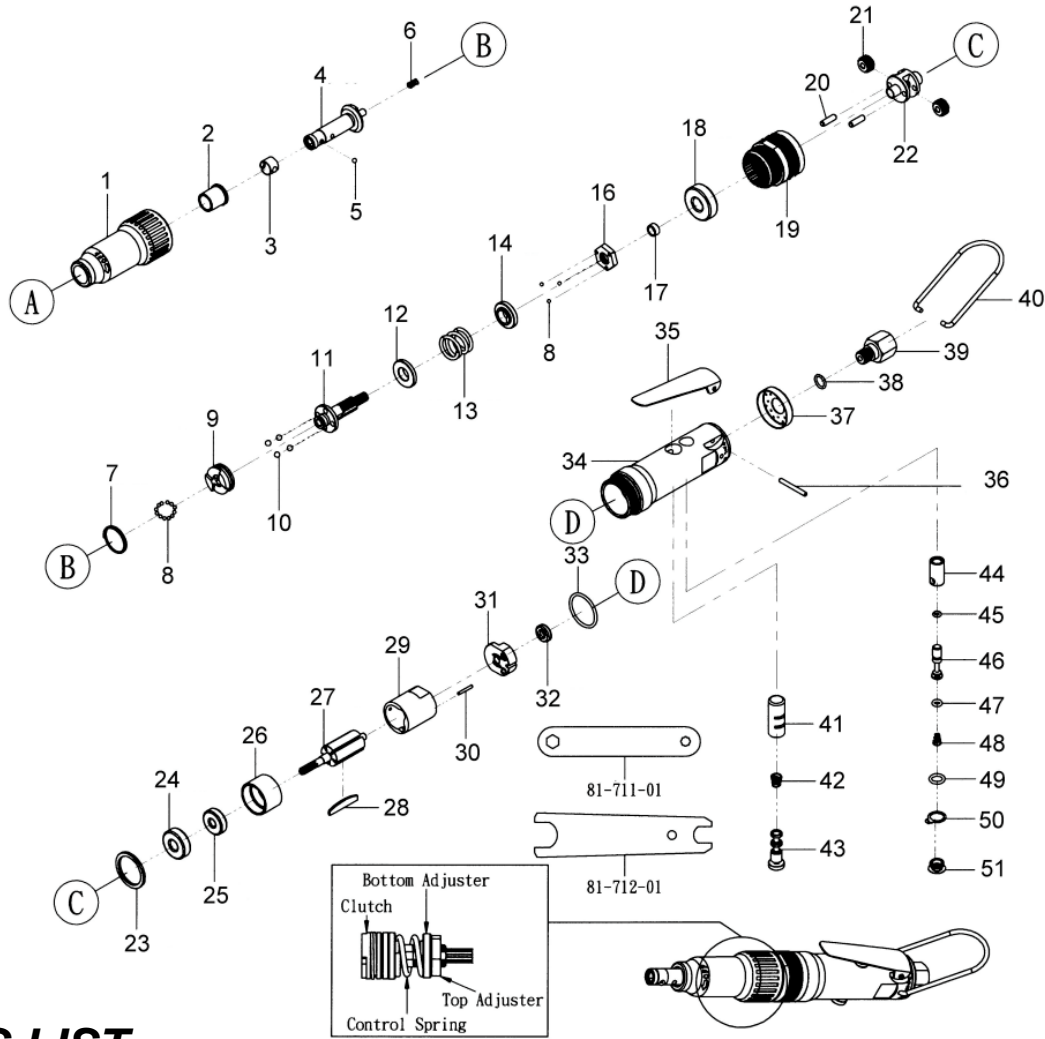




# GISON Pneumatic Tools

## GP-861H/861HK Air Screw Driver



### PARTS LIST

✳ : Consuming Part

| Item No. | Part No. | Description          | Qty. | Item No. | Part No. | Description         | Qty. |
|----------|----------|----------------------|------|----------|----------|---------------------|------|
| 1        | 861H01   | Front Cap            | 1    | 27       | 861H27   | Rotor               | 1    |
| 2        | 861H02   | Bushing              | 1    | 28       | 861H28   | Rotor Blade         | 5    |
| 3        | 861H03   | Ring                 | 1    | 29       | 861H29   | Cylinder            | 1    |
| 4        | 861H04   | Anvil                | 1    | 30       | 861H30   | Pin (ø2 x 14)       | 1    |
| 5        | 861H05   | Iron Ball (ø 1/8")   | 1    | 31       | 861H31   | Rear Plate          | 1    |
| 6        | 861H06   | Spring               | 1    | 32       | 861H32   | Ball Bearing (695)  | 1    |
| 7        | 861H07   | Retaining Ring       | 1    | 33       | 861H33   | O-Ring (P23.5 x 2)  | 1    |
| 8        | 861H08   | Steel Ball (ø 2.5mm) | 15   | 34       | 861H34   | Handle              | 1    |
| 9        | 861H09   | Clutch               | 1    | 35       | 861H35   | Switch Lever        | 1    |
| 10       | 861H10   | Steel Ball (ø 4mm)   | 4    | 36       | 861H36   | Pin (ø3 x 26)       | 1    |
| 11       | 861H11   | Driving Rod          | 1    | 37       | 861H37   | Muffer              | 1    |
| 12       | 861H12   | Washer               | 1    | 38       | 861H38   | O-Ring (P8 x 1.5)   | 1    |
| 13       | 861H13   | Spring               | 1    | 39       | 861H39   | Air Inlet           | 1    |
| 14       | 861H14   | Washer               | 1    | 40       | 861H40   | Hook                | 1    |
| 16       | 861H16   | Bolt                 | 1    | 41       | 861H41   | Bushing             | 1    |
| 17       | 861H17   | Washer               | 1    | 42       | 861H42   | Spring              | 1    |
| 18       | 861H18   | Ball Bearing (6000)  | 1    | 43       | 861H43   | Reverse Valve       | 1    |
| 19       | 861H19   | Gear Ring            | 1    | 44       | 861H44   | Bushing             | 1    |
| 20       | 861H20   | Pin (ø 4x13)         | 2    | 45       | 861H45   | O-Ring (P3.5 x 1.5) | 1    |
| 21       | 861H21   | Gear                 | 2    | 46       | 861H46   | Valve Rod           | 1    |
| 22       | 861H22   | Gear Seat            | 1    | 47       | 861H47   | O-Ring (P4 x 1.9)   | 1    |
| 23       | 861H23   | Washer               | 1    | 48       | 861H48   | Spring              | 1    |
| 24       | 861H24   | Ball Bearing (608)   | 1    | 49       | 861H49   | O-Ring (P8 x 1.9)   | 1    |
| 25       | 861H25   | Ball Bearing (626)   | 1    | 50       | 861H50   | Ring                | 1    |
| 26       | 861H26   | Front Plate          | 1    | 51       | 861H51   | Screw               | 1    |