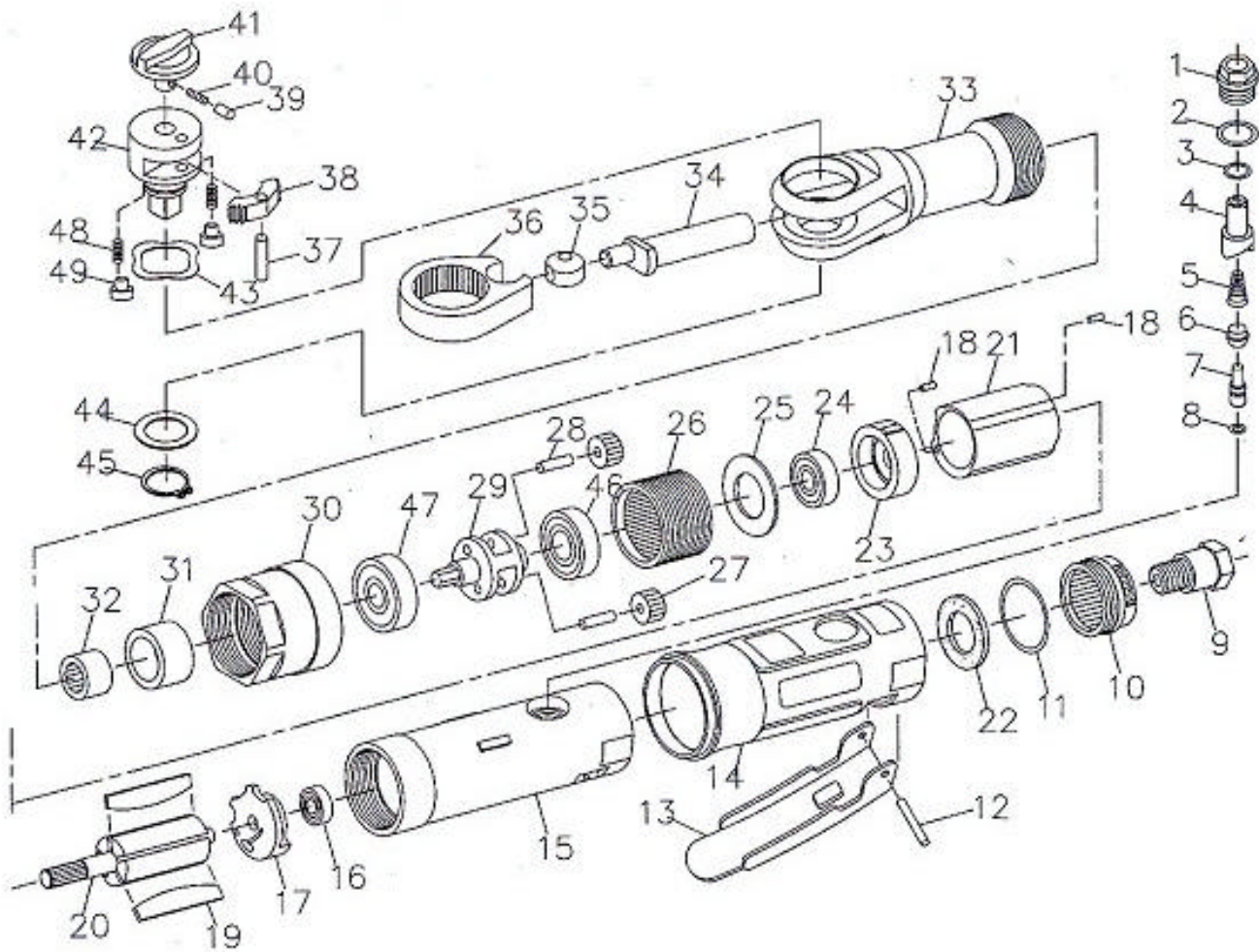




GISON Pneumatic Tools

GP-855D/856D 3/8" / 1/2" Air Ratchet Wrench



PARTS LIST

✳ : Consuming Part

| Item No. | Part No. | Description | Qty. | Item No. | Part No. | Description | Qty. |
|----------|----------|----------------------|------|----------|----------|-----------------------|------|
| 01 | 855D01 | Screw | 1 | 26 | 855D26 | Thrad Ring Gear (41T) | 1 |
| 02 | 855D02 | O-Ring (P12) | 1 | 27 | 855D27 | Gear (16T) | 2 |
| 03 | 855D03 | O-Ring (P8) | 2 | 28 | 855D28 | Idler Gear Pin | 2 |
| 04 | 855D04 | Air Regulator | 1 | 29 | 855D29 | Idler Gear Plate | 1 |
| 05 | 855D05 | Spring | 1 | 30 | 855D30 | Clamp Nut | 1 |
| 06 | 855D06 | Valve Stem Bushing | 1 | 31 | 855D31 | Bushing | 1 |
| 07 | 855D07 | Valve Stem | 1 | 32 | 855D32 | Needle Bearing | 1 |
| 08 | 855D08 | O-Ring (3.5 * 1.4) | 1 | 33 | 855D33 | Ratchet Housing | 1 |
| 09 | 855D09 | Air Inlet | 1 | 34 | 855D34 | Crank Shaft | 1 |
| 10 | 855D10 | Exhaust Sleeve | 1 | 35 | 855D35 | Drive Bushing | 1 |
| 11 | 855D11 | O-Ring (26.7 * 1.78) | 1 | 36 | 855D36 | Ratchet Yoke | 1 |
| 12 | 855D12 | Spring Pin | 1 | 37 | 855D37 | Pin | 1 |
| 13 | 855D13 | Lever | 1 | 38 | 855D38 | Ratchet PAWL | 1 |
| 14 | 855D14 | Protecting Rubber | 1 | 39 | 855D39 | Lock Pin | 1 |
| 15 | 855D15 | Housing | 1 | 40 | 855D40 | Spring | 1 |
| 16 | 855D16 | Bearing | 1 | 41 | 855D41 | Reverse Button | 1 |
| 17 | 855D17 | Rear Plate | 1 | 42 | 855D42 | Ratchet Anvil (3/8") | 1 |
| 18 | 855D18 | Pin | 2 | | 856D42 | Ratchet Anvil (1/2") | |
| 19 | 855D19 | Rotor Blade | 5 | 43 | 855D43 | Wave Washer | 1 |
| 20 | 855D20 | Rotor | 1 | 44 | 855D44 | Washer | 1 |
| 21 | 855D21 | Cylinder | 1 | 45 | 855D45 | Retainer Ring | 1 |
| 22 | 855D22 | Cone Muffler | 1 | 46 | 855D46 | Bearing (6001ZZ) | 1 |
| 23 | 855D23 | Front Plate | 1 | 47 | 855D47 | Bearing (6000ZZ) | 1 |
| 24 | 855D24 | Bearing (608ZZ) | 1 | 48 | 855D48 | Spring | 2 |
| 25 | 855D25 | Washer | 1 | 49 | 855D49 | Pin | 2 |