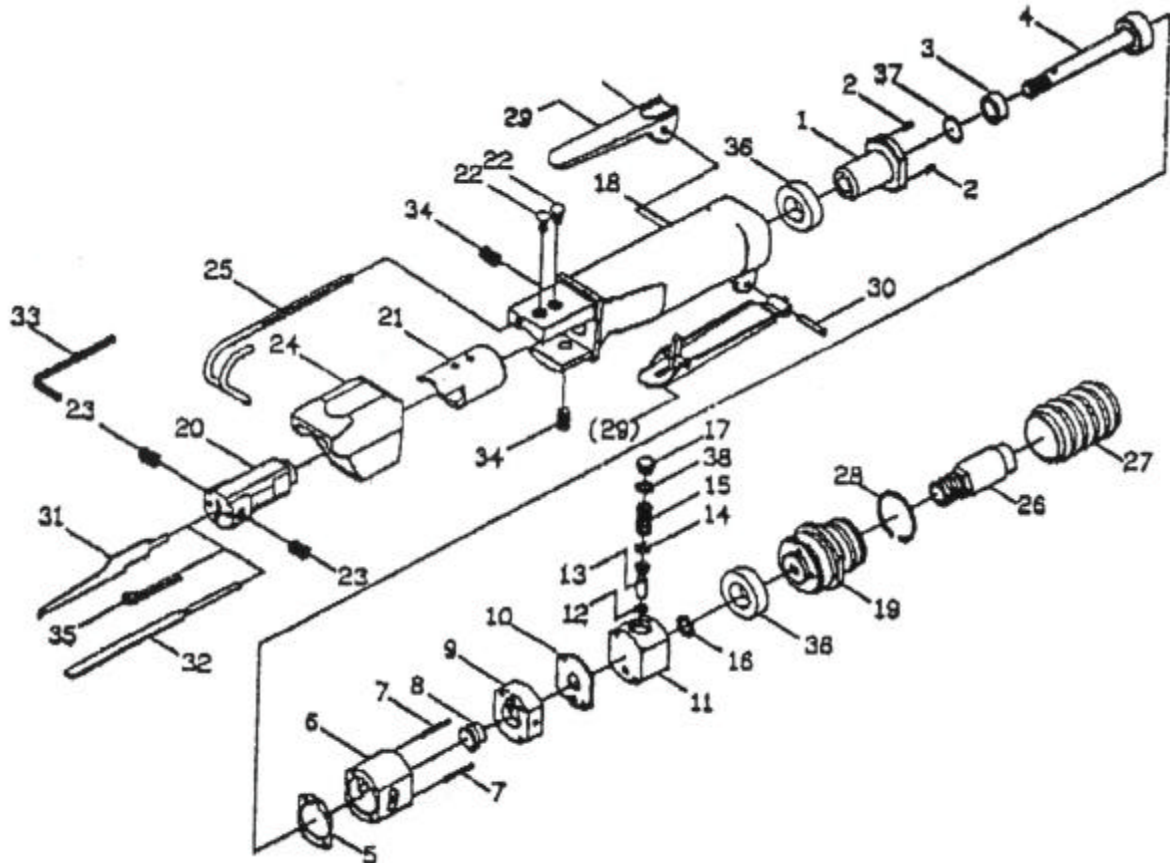




# 吉生 GISON

## GP-848T Air Body Saw & File



### PARTS LIST

✧ : Consuming Part

Item No.	Part No.	Description	Qty.	Item No.	Part No.	Description	Qty.
1	848T01	Cylinder Head Ass'y	1	21	848T21	Silding Liner	1
2	848T02	Front Dowel Pin	2	22	848T22	Pan Screw	2
✧ 3	848T03	Bumper	1	✧ 23	848T23	Set Screw	2
✧ 4	848T04	Piston Ass'y	1	24	848T24	Protect Cover	1
✧ 5	848T05	Gasket	1	✧ 25	848T25	Holder	1
6	848T06	Cylinder	1	26	848T26	Intake Hose Ass'y (opt.)	1
7	848T07	Rear Dowel Pin	2	27	848T27	Exhaust Hose (opt.)	1
✧ 8	848T08	Automatic Valve	1	28	848T28	Ring-Exhaust Hose	1
9	848T09	Valve Chest	1	29	848T29	Lever Ass'y (Safety)	1
10	848T10	Valve Seat	1	30	848T30	Roll Pin	1
11	848T11	Throttle Valve Case	1	✧ 31	848T31	Saw Blade-18T	1
12	848T12	O-Ring	1		848T31a	Saw Blade-24T	
13	848T13	Valve Stem	1		848T31b	Saw Blade-32T	
✧ 14	848T14	O-Ring	1	✧ 32	848T32	Regular File	1
✧ 15	848T15	Spring	1	33	848T33	3 mm Hex. Wrench	1
✧ 16	848T16	O-Ring	1	34	848T34	Set Screw	2
17	848T17	Throttle Valve Cap	1	35	848T35	Alignment Pin	1
18	848T18	Handle	1	36	848T36	Muffler	2
19	848T19	Throttle Arbor	1	37	848T37	O-Ring	1
✧ 20	848T20	Blade Holder Ass'y	1	✧ 38	848T38	O-Ring	1

#### Optional Accessories:

- Patented Universal Swivel Joint w/Regulator.
- Saw Blades
  - 10 pcs Pack-32T (mainly for light gauge metal)
  - 20 pcs Pack-24T (recommand for sheets up to 2 mm)
  - 10 pcs Pack-18T (for aluminum, plastics, wood, etc.)
- Regular Small Files: 1 set consistion of round, half-round, rectangular, square and triangular file.
- Diamond Files: 1 set consisting of rectangular, triangular and round file.

## ***Applications:***

This tool has established itself within the shortest time through its multipurpose, expedient and simple utilization in body repairs to saw sheet metal, thermosetting-plastics, glassfiber-reinforced plastics, aluminum and wood etc. Many technical advantages and its simple handling make it superior to all other compass-body-saws in practice and economy.

It is designed for successful utilization when installing sun-roofs in cars; no usual corrugations of the roof and the radius can be sawn easily. It is ideal for built-in speaker mounting, and effortless operation on profiles and close-fitted double sheeting e.g. wheel-housing, doorsills, chassis-sections, rear panels, etc.

When fitted with a file, it is applicable to refinish door locks, oblong holes, etc.

## ***Features:***

- Extreme long endurance and high operating safety.
- Light-weight only 0.9 kg and slim body design for simple operation with one hand.
- Burrless, continuous cutting and exact fitting of separation lines in sectional repairs.
- Unique air intake design assures high performance with least air consumption.
- Highest manufacturing quality and selected materials guarantee full efficiency for years, without service.
- Patented Blade-Holder design assures expedient and simple conversion/adoption for both saw blades and files.
- Minimum environmental disturbance and lower noise level than the pneumatic Chipping Hammers (sound absorbing).
- Enables an expedient utilization in body repairs. Especially solid construction allows simple and continuous repairing on spots of difficult accessibility susceptible sections.
- The saw blades will not be damaged by running against inside body-metal. It maintains long endurance of the flexible saw blades even when cutting curves and profiles.

## ***Operating & Maintenance Instructions:***

### ***Oiling Instructions:***

Good continuing services from your new saw & file depends on proper oiling. Light oil should be applied through air inlet at regular intervals, unless your air line is equipped with an automatic oiling device.

Filtered air is of course desirable whenever practical.

**Caution:** Disconnect tool before performing service, changing accessories and when not in use.

### ***Saw Blades:***

Select the right material and the right tooth blade for your operation. For general purpose sawing aluminum and other soft materials, use 24 teeth high speed blades. For Light metal, such as body panels, exhaust pipes, etc. use 32 teeth blades. Sawing is accomplished on the back stroke which results longer life of the blade and breakage. Tighten screw on the side of the **Saw Blade Holder** securely so that the blade/file will not slip.

### ***Sawing & Filing:***

To start a cut, hold the tool firmly against the material. Start cutting slowly and lightly. Excessive pressure applied to the saw blade will retard the cutting speed and capacity. The saw blade holder will also take small diamond files ( 3 mm shank dia. ) or regular small files of all shapes which may be quickly adopted by grinding and fitting the file shank to the Saw Blade Holder. You can use your own accessories which experience has proven to be best adopted to your particular work. Use speed **Regulator** to acquire the proper speed before the **FILING** process is executed. The patented "Universal Swivel Joint" with regulator is recommended for **FILING** or while the exhaust hose is not in use and better maneuverability of the tool is required.