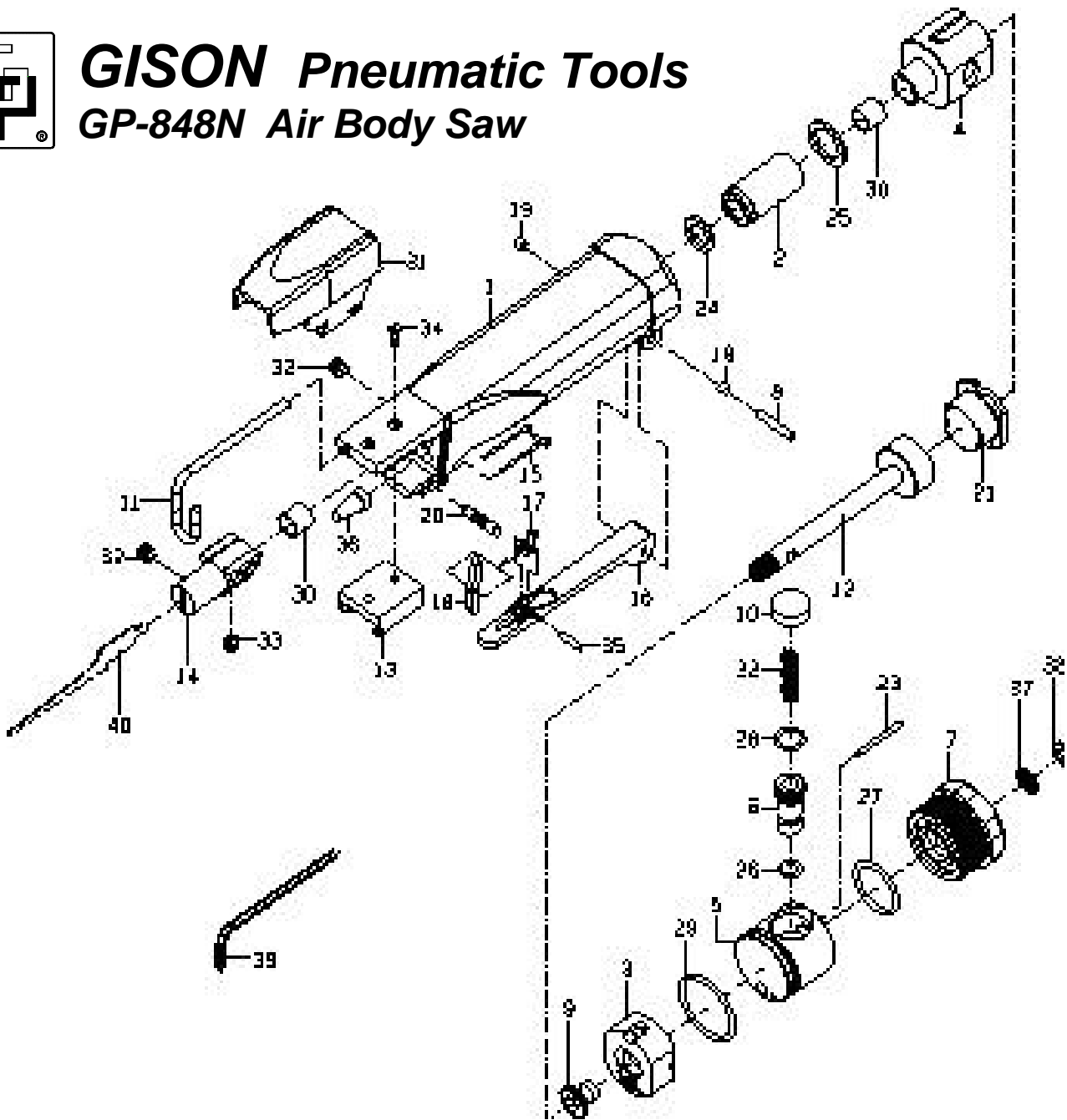




GISON Pneumatic Tools

GP-848N Air Body Saw



PARTS LIST

✳ : Consuming Part

Item No.	Part No.	Description	Qty.	Item No.	Part No.	Description	Qty.
1	848N01	Housing	1	22	848N22	Valve Spring	1
2	848N02	Spacer	1	23	848N23	Alignment Pin	1
3	848N03	Valve Case	1	24	848N24	Front Gasket	1
4	848N04	Cylinder	1	25	848N25	Rear Gasket	1
5	848N05	Valve Block	1	✳ 26	848N26	Valve Stem O-Ring	1
6	848N06	Valve	1	✳ 27	848N27	Inlet Block O-Ring	1
7	848N07	Inlet Block	1	✳ 28	848N28	Valve O-Ring	1
8	848N08	Throttle Lever Pin	1	✳ 29	848N29	Valve Block O-Ring	1
9	848N09	Valve	1	30	848N30	Housing & Cylinder Bushing	2
10	848N10	Valve Set Cap	1	31	848N31	Housing Cover	1
11	848N11	Work Guide	1	32	848N32	Blade & Work Guide Set Screw	2
12	848N12	Piston Rod	1	33	848N33	Chuck & Piston Rod Set Screw	1
13	848N13	Blade Chuck Guide	1	34	848N34	Blade Chuck Guide Set Screw	2
14	848N14	Blade Chuck	1	35	848N35	Safety Lever Pin	1
15	848N15	Housing Cover Fix Hook	1	36	848N36	Muffler	1
16	848N16	Throttle Lever	1	37	848N37	Filter	1
17	848N17	Lever Throttle Spring	1	38	848N38	Filter Set Washer	1
18	848N18	Safety Lever	1	✳ 39	848N39	Hex. Wrench	1
19	848N19	Throttle Lever Bushing	2	✳ 40	848N40	Blade - 24T	1
20	848N20	Housing Cover Set Pin	1	40-1	848N40-1	Blade - 32T	1
21	848N21	Cylinder End Cap	1				