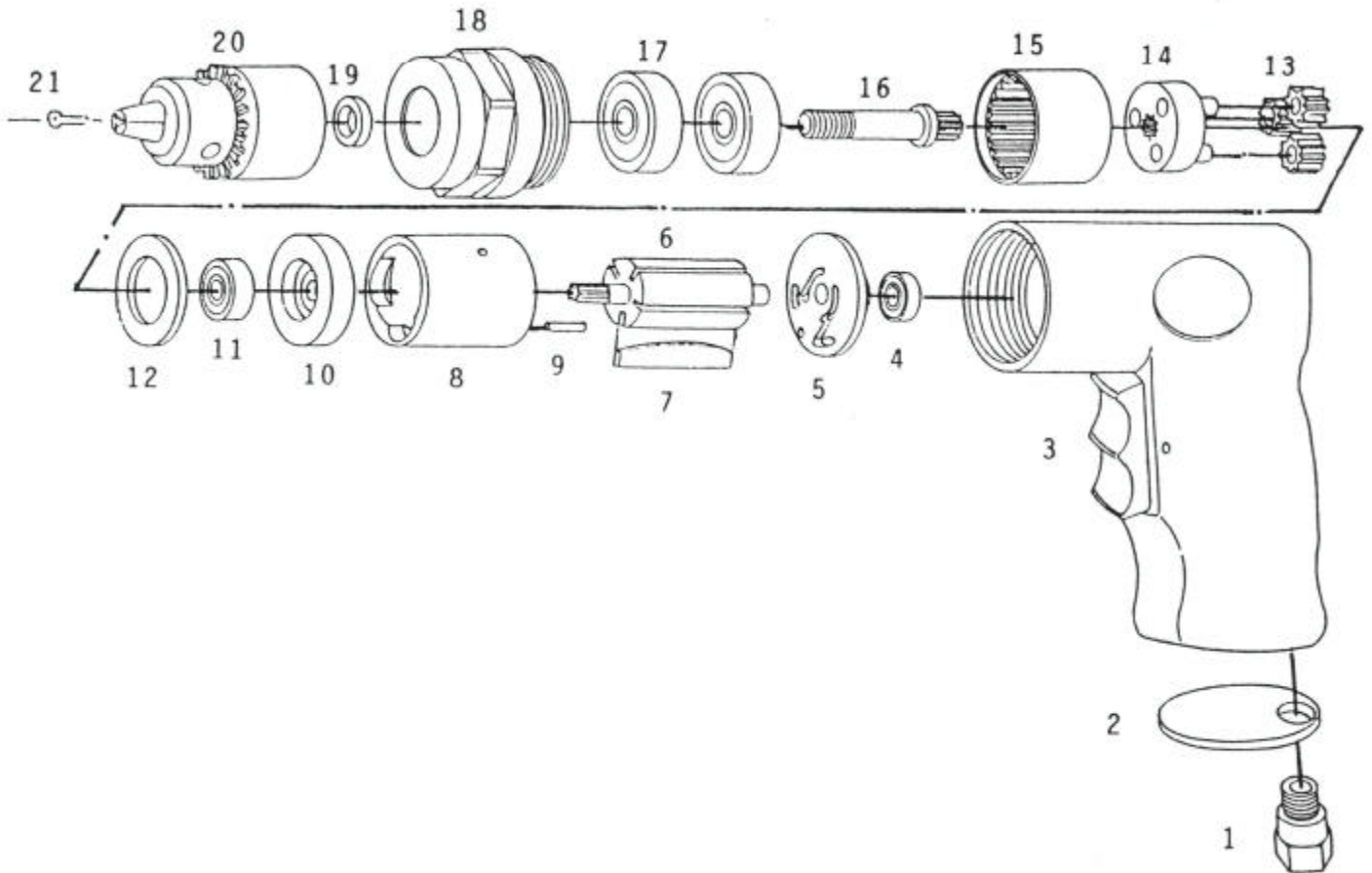




吉生 GISON

GP-840L 3/8" Reversible Air Drill



PARTS LIST

✿ :Consuming Part

| Item No. | Part No. | Description | Qty. | Item No. | Part No. | Description | Qty. |
|----------|----------|------------------|------|----------|----------|---------------|------|
| 1 | 840L01 | Air Inlet | 1 | 12 | 840L12 | Washer | 1 |
| 2 | 840L02 | Exhaust Diffuser | 1 | 13 | 840L13 | Planet Gear | 3 |
| 3 | 840L03 | Handle Assembly | 1 | 14 | 840L14 | Planet Pin | 3 |
| 4 | 840L04 | Ball Bearing | 1 | 15 | 840L15 | Planet Cage | 1 |
| 5 | 840L05 | Rear Plate | 1 | 16 | 840L16 | Internal Gear | 1 |
| 6 | 840L06 | Rotor | 1 | 17 | 840L17 | Ball Bearing | 2 |
| ✿ 7 | 840L07 | Rotor Blade | 5 | 18 | 840L18 | Nose Housing | 1 |
| 8 | 840L08 | Cylinder | 1 | 19 | 840L19 | Washer | 1 |
| 9 | 840L09 | Roll Pin | 1 | 20 | 840L20 | Chuck | 1 |
| 10 | 840L10 | Front End Plate | 1 | 21 | 840L21 | Screw | 1 |
| 11 | 840L11 | Ball Bearing | 1 | | | | |