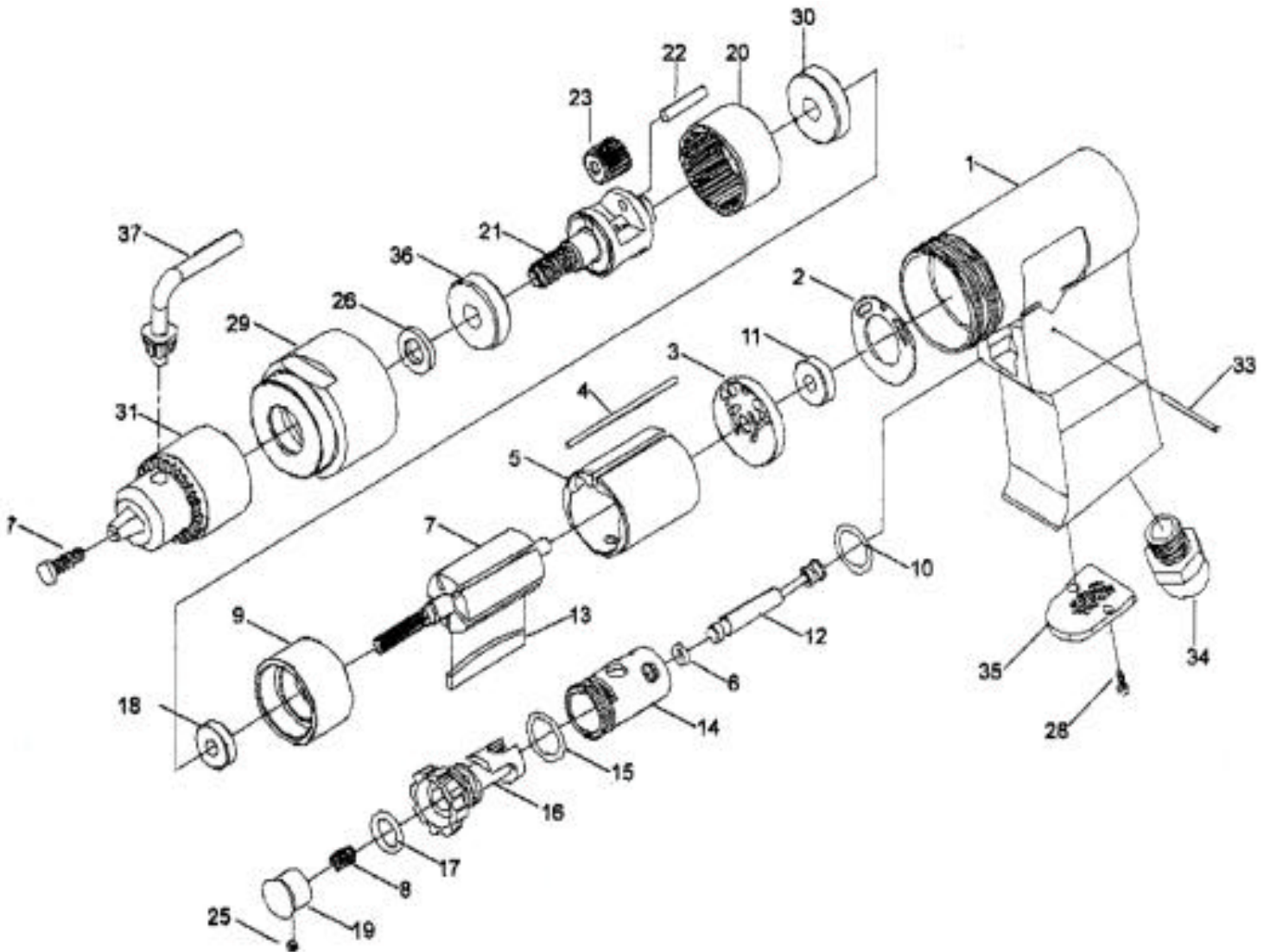




GISON Pneumatic Tools

GP-840A 3/8" Heavy Duty Reversible Air Drill



PARTS LIST

✳ : Consuming Part

| No. | Part No. | Description | Qty. | No. | Part No. | Description | Qty. |
|-----|----------|-----------------|------|-----|----------|---------------------|------|
| 01 | 840A01 | Housing Motor | 1 | 19 | 840A19 | Trigger | 1 |
| 02 | 840A02 | Motor Gasket | 1 | 20 | 840A20 | Internal Gear | 1 |
| 03 | 840A03 | Plate Read End | 1 | 21 | 840A21 | Planet Link Spindle | 1 |
| 04 | 840A04 | Pin Liner | 1 | 22 | 840A22 | Pin | 2 |
| 05 | 840A05 | Cylinder | 1 | 23 | 840A23 | Gear | 2 |
| 06 | 840A06 | O-Ring | 1 | 25 | 840A25 | Set Screw | 1 |
| ✳07 | 840A07 | Rotor | 1 | 26 | 840A26 | Washer | 1 |
| 08 | 840A08 | Spring | 1 | ✳27 | 840A27 | Chuck Screw | 1 |
| 09 | 840A09 | Front Plate | 1 | 28 | 840A28 | Screw | 2 |
| 10 | 840A10 | O-Ring | 1 | 29 | 840A29 | Clamp Nut 1/2" | 1 |
| 11 | 840A11 | Ball Bearing | 1 | 30 | 840A30 | Ball Bearing | 1 |
| 12 | 840A12 | Valve Stem | 1 | 31 | 840A31 | Drill Chuck 1/2" | 1 |
| ✳13 | 840A13 | Rotor Blades | 5 | 33 | 840A33 | Spring Pin | 1 |
| 14 | 840A14 | Reverse Bushing | 1 | 34 | 840A34 | Air Inlet | 1 |
| 15 | 840A15 | O-Ring | 1 | 35 | 840A35 | Exhaust Diffuser | 1 |
| 16 | 840A16 | Reverse Lever | 1 | 36 | 840A36 | Ball Bearing | 1 |
| 17 | 840A17 | O-Ring | 1 | 37 | 840A37 | Chuck Key | 1 |
| 18 | 840A18 | Ball Bearing | 1 | | | | |