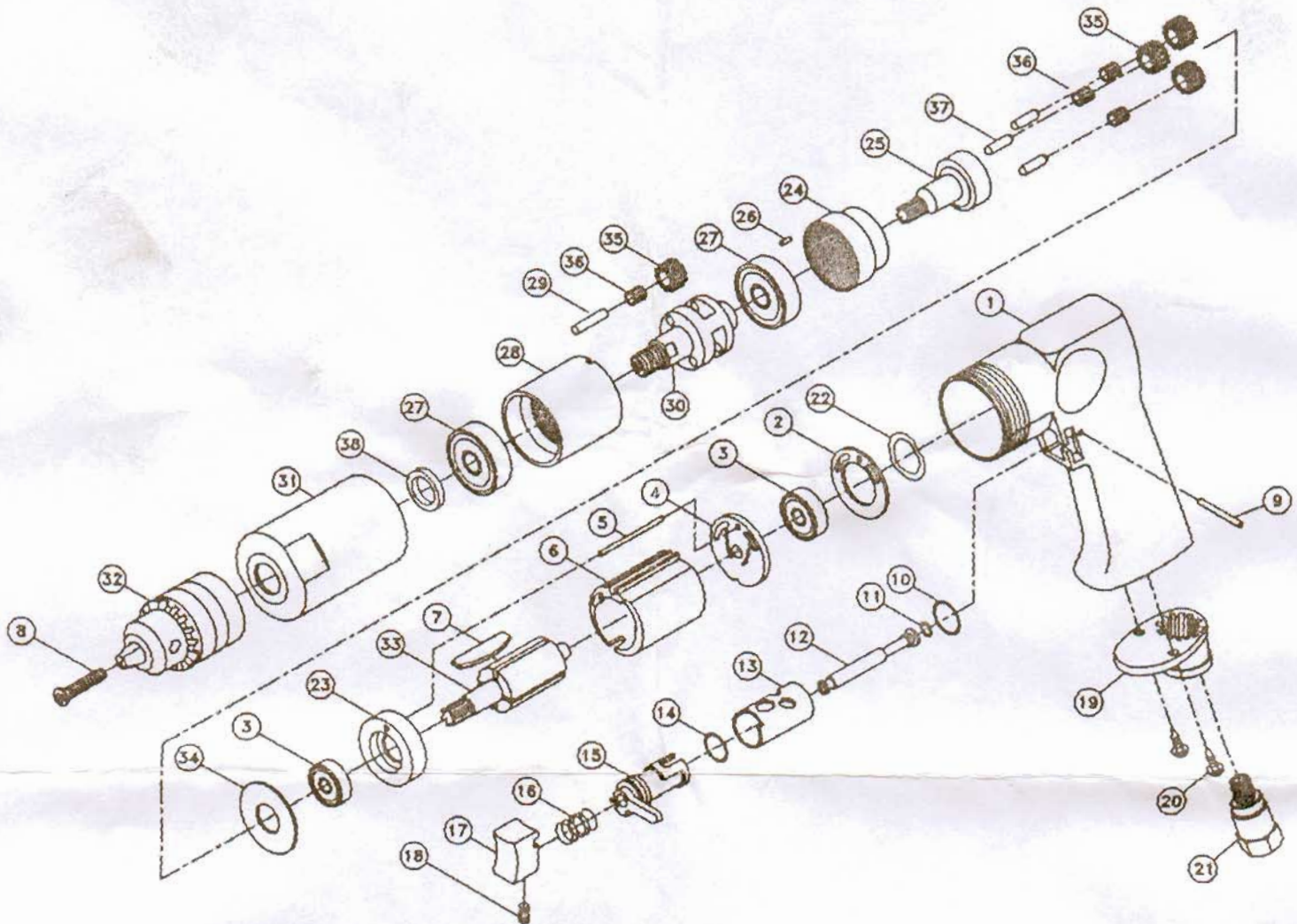




GISON Pneumatic Tools

GP-836E2 1/2" REVERSIBLE AIR DRILL (250 RPM)



PARTS LIST

✦ : Consuming Part

Item No.	Part No.	Description	Qty.	Item No.	Part No.	Description	Qty.
1	836E401	Motor Housing	1	20	836E420	Screw	2
2	836E402	Gasket	1	21	836E421	Air Inlet	1
3	836E403	Bearing 626	2	22	836E422	Wave Washer	1
4	836E404	End Plate	1	23	836E423	Bearing Case	1
5	836E405	Pin	1	24	836E424	Annular Gear	1
6	836E406	Cylinder	1	25	836E425	Gear Complete	1
7	836E407	Blade	4	26	836E426	ø 2 x 5L Pin	1
8	836E408	Screw	1	27	836E427	Bearing 6002	2
9	836E409	Pin	1	28	836E428	Annular Gear	1
10	836E410	O-Ring	1	29	836E429	ø 4 x 18L Pin	3
11	836E411	O-Ring	1	30	836E430	Gear Complete	1
12	836E412	Valve Stem	1	31	836E431	Gear Housing	1
13	836E413	Reverse Bushing	1	32	836E432	1/2" Drill Chuck	1
14	836E414	O-Ring	1	33	836E433	Rotor	1
15	836E415	Reverse Lever	1	34	836E434	Washer	1
16	836E416	Valve Spring	1	35	836E435	Planet Gear	6
17	836E417	Trigger	1	36	836E436	Needle Bearing	6
18	836E418	Screw	1	37	836E437	Pin	3
19	836E419	Exhaust Deffuser	1	38	836E438	Flet	1

✦ If you need to order parts, please mark both **Parts No.** and **Description.**

<http://www.gison.com>