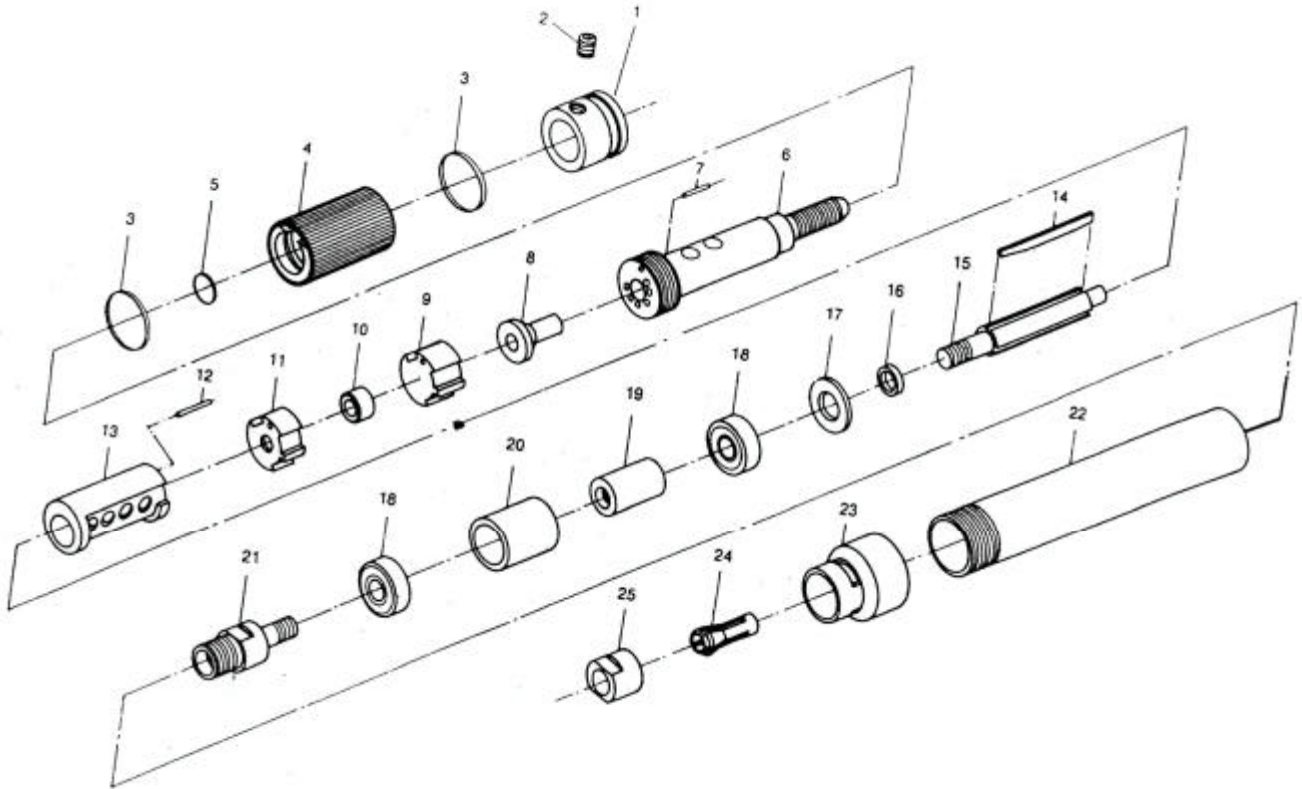


吉生 GISON

GP-8242-1 Air Micro Grinder



PARTS LIST

✿ :Consuming Part

Item No.	Part No.	Description	Qty.	Item No.	Part No.	Description	Qty
1	8242101	Rear End Holder	1	15	8242115	Rotor	1
2	8242102	Screw	1	16	8242116	Spacer	1
3	8242103	O-Ring	2	17	8242117	Lateral Disc	1
4	8242104	Sliding Knob	1	✿ 18	8242118	Ball Bearing	2
5	8242105	O-Ring	1	19	8242119	Interior Bearing	1
6	8242106	Hose Plug	1			Retainer Bushing	
7	8242107	Pin	1	20	8242120	Outer Bearing	1
8	8242108	Plug	1			Retainer Bushing	
9	8242109	Intake Plate	1	21	8242121	Collet Foundation	1
✿ 10	8242110	Ball Bearing	1	22	8242122	Sleeve	1
11	8242111	Bearing Plate	1	23	8242123	Front Cover	1
12	8242112	Pin	1	24	8242124	Collet	1
13	8242113	Cylinder	1	25	8242125	Clamping Nut	1
✿ 14	8242114	Rotor Blade	3				

Application: Ideal for grinding metal model, grinding the teeth of model, machine processing, engrave wood, gold processing and parts processing.

Please read follows carefully before operating:

1. Avoid heavy power impact to damage the precious Front Chuck.
2. To get the Abrasive Wheel tighten, please use wrench to turn reverse side everytime before operation.
3. Before operation, please be sure the Rotary Mounted Point is straight.
4. Always wear Safety Goggles to guard against eye injury cause be flying particles.
5. Suggest to use light density, non-detergent lubricant oil (i.e. #60).
6. Applicable to air working pressure 0~90 psig, regular speed: **70,000 RPM.**

Maintenance:

Do not try disassemble an airmotor by yourself, because it requires skillful person to maintain the tools. Repairing cost will be charged even it is during a term of gurantee, if the tool exposed rust or no trace of lubricant on a cylinder during the course of normal repair.

Ball Bearings:

A proper break in operation given to a new grinder during its initial use with such low pressure as 50~55 psi for the first 2~3 hours will favor to the grinder for its longer span of service afterwards.