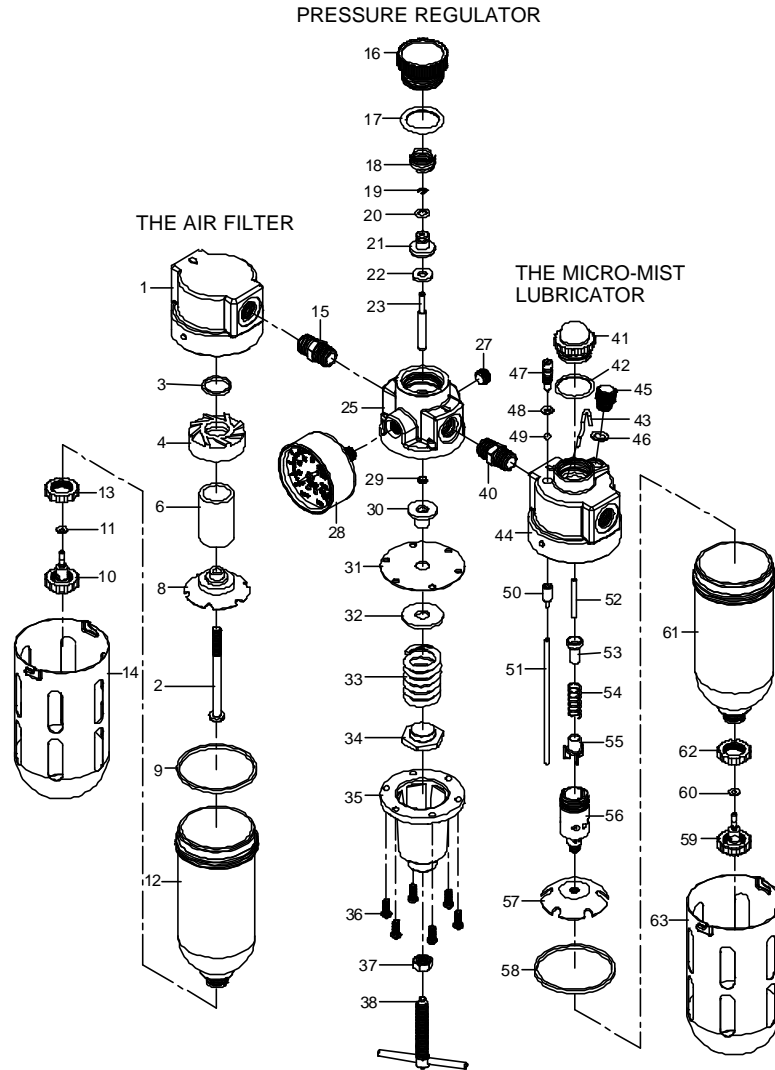




# 吉生 GISON

## GP-815/816/817 Air Preparation Units



### PARTS LIST

☛ : Consuming Part

Item No.	Part No.	Description	Qty.	Item No.	Part No.	Description	Qty.	Item No.	Part No.	Description	Qty.
1	F-01	Filter Body	1	25	R-10	Regulator Body	1	47	L-07	Screw	1
2	F-02	Screw Rod	1	27	R-12	Brass Screw	1	48	L-08	O-Ring	1
3	F-03	O-Ring	1	28	R-13	Pressure Gauge	1	49	L-09	Stell Ball	1
4	F-04	Spiral Baffle	1	29	R-14	Gasket	1	50	L-10	Coupler	1
6	F-06	Filter Element	1	30	R-15	Screw Bolt	1	51	L-11	Transport Tube	1
8	F-08	Umbrella Baffle	1	31	R-16	Diaphragm		52	L-12	Venturi Tube	1
9	F-09	O-Ring	1	32	R-17	Diaphragm Lock	53	L-13	Plastic Plug	1	
10	F-10	Drain Rod		33	R-18	Adjusting Spring	1	54	L-14	Vibratory Spring	1
11	F-11	O-Ring		34	R-19	Regulated Nut	1	55	L-15	Vibrator	1
☛ 12	F-12	Plastic Bowl		35	R-20	Regulator Bowe	1	56	L-16	Mixing Chamber	1
13	F-13	Plastic Drain	1	36	R-21	Fastening Screw	6	57	L-17	Umbrella Baffle	1
14	F-14	Metal Bowl Guard		37	R-22	Hexagon Screw	1	58	L-18	O-Ring	1
15	F-15	1/4" Hexagon Nipple (GP-815)	38	R-23	Adjusting Rcd	1		59	L-19	Screw Bolt	
		3/8" Hexagon Nipple (GP-816)	39	R-24	Mounting Bracket	1	60	L-20	O-Ring		
		1/2" Hexagon Nipple (GP-817)	40	R-27	Hexagon Nipple	1	61	L-21	Plastic Bowl		
16	R-01	Proppet Valve Cap.	1	41	L-01	Visi-Dome	1	62	L-22	Plastic Drain	1
17	R-02	O-Ring	1	42	L-02	Gasket	1	63	L-23	Metal Bowl Guard	
18	R-03	Valve Spring	1	43	L-03	Drip Tube	1	70	F-70	F-09,F-10,F-11,F-12,F-13	1
19	R-04	Lock Pin	1	44	L-04	Lubricator Body	1	71	R-71	R-06,R-07	1
20	R-05	O-Ring		45	L-05	Fill Plug	1	72	R-72	R-15,R-16,R-17	1
21	R-06	Fastening Plug	1	46	L-06	O-Ring	1	73	R-73	R-22,R-23	1
23	R-08	Regulator Pin		47	L-07	Oil Feed Adjustment	1	74	L-74	L-18,L-19,L-20,L-21,L-22	1