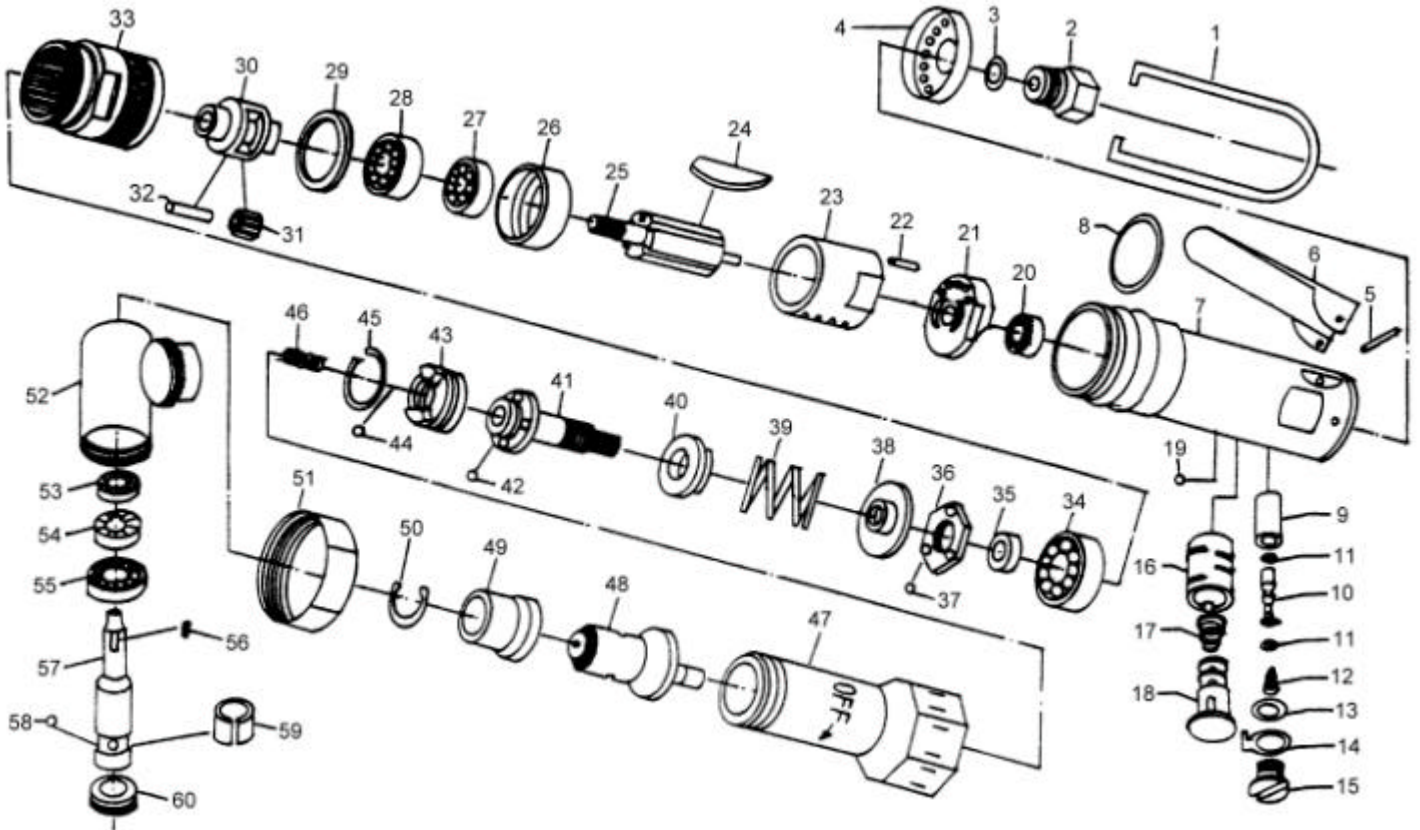


GISON Pneumatic Tools

GP-804L90 90° Angle Clutch Screw Driver



PARTS LIST

✳ : Consuming Part

Item No.	Part No.	Description	Qty.	Item No.	Part No.	Description	Qty.
1	804L01	Hanger	1	31	804L31	Planet Wheel	1
2	804L02	Air Inlet	1	32	804L32	Planet Pin	1
3	OR030	O-Ring (P8)	1	33	804L33	Internal Gear	1
4	804L04	Exhaust Cover	1	34	B6000ZZ	Ball Bearing (6000)	1
5	804L05	Lever Pin (3x22)	1	35	804L35	Collar	1
6	804L06	Switch Lever	1	36	804L36	Adjust Nut	1
7	804L07	Motor Case	1	37	804L37	Steel Ball (A)	3
8	804L08	O-Ring	1	38	804L38	Adjust Nut Seat	1
9	804L09	Bushing	1	39	804L39	Clutch Spring	1
10	804L10	Valve Stem	1	40	804L40	Clutch Spring Seat	1
11	OR005	O-Ring (P4)	2	41	804L41	Clutch Spindle	1
12	804L12	Valve Spring	1	42	804L42	Steel Ball	4
13	OR030	O-Ring (P8)	1	43	804L43	Clutch Dog	1
14	804L14	Reverse Retainer	1	44	804L44	Steel Ball (A)	13
15	804L15	Valve Screw	1	45	804L45	Dog Retainer	1
16	804L16	Bushing	1	46	804L46	Center Spring	1
17	804L17	Reverse Spring	1	47	804L47	Clutch Case Nut	1
18	804L18	Reverse Valve	1	48	804L48	Anvil of Gear	1
19	832029	Steel Ball (1/8")	4	49	804L49	Bushing	1
20	804L20	Ball Bearing (695)	1	50	804L50	Retainer Ring	1
21	804L21	Rear End Plate	1	51	804L51	Nut	1
22	804L22	Pin	1	52	804L52	Angle Case	1
23	804L23	Cylinder	1	53	804L53	Ball Bearing (625)	1
✳ 24	804L24	Rotor Blade	5	54	804L54	Gear Driven	1
25	804L25	Rotor	1	55	B608ZZ	Ball Bearing (608)	1
26	804L26	Front Plate	1	56	804L56	Semicircle Pin	1
27	B626ZZ	Ball Bearing (626)	1	57	804L57	Driving Shaft	1
28	B608ZZ	Ball Bearing (608)	1	✳ 58	832029	Steel Ball (1/8")	1
29	804L29	Washer	1	✳ 59	804L59	Steel Ball Collar	1
30	804L30	Planet Cage	1	60	804L60	Top Adjuster	1