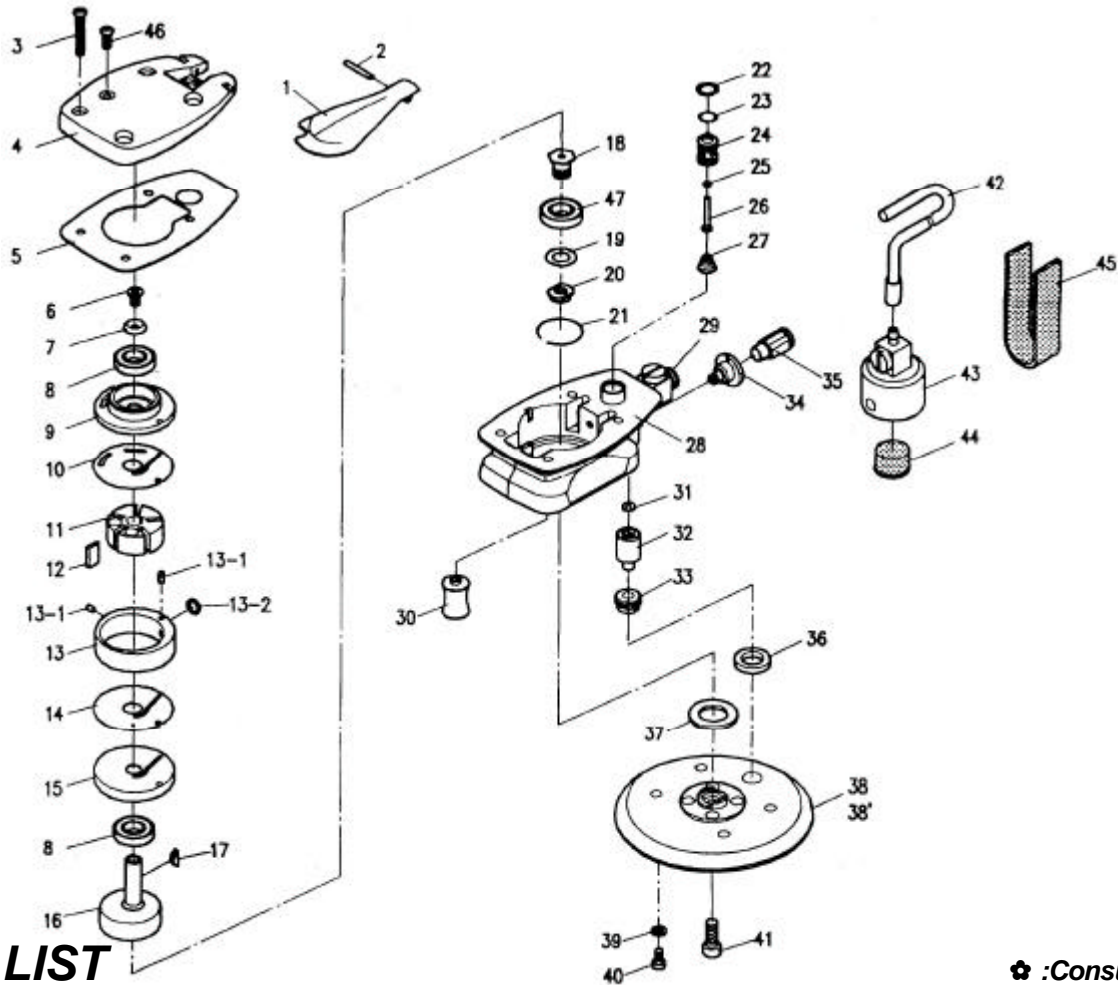


# 吉生 GISON

## GP-732W Waterfed Air Sander



### PARTS LIST

⊛ : Consuming Part

Item No.	Part No.	Description	Qty.	Item No.	Part No.	Description	Qty.
1	732W01	Valve Lever	1	24	732W24	Valve Pin Sleeve	1
2	732W02	Spring Pin (Ø3 x 34)	1	25	732W25	O-Ring (Ø4 x Ø7)	1
3	732W03	Screw (M5 x 35)	4	26	732W26	Valve Pin	1
4	732W04	Top Cover	1	27	732W27	Valve Spring	1
5	732W05	Body Packing	1	28	732W28	Body	1
6	732W06	Screw (M5 x 10)	1	29	732W29	Regulator Set	1
7	732W07	Conical Washer (M5)	1	30	732W30	Support	4
8	732W08	Bearing (6000ZZ)	2	31	732W31	Check Valve	1
9	732W09	U-Bearing Case	1	32	732W32	W-Nozzle Body	1
10	732W10	U-Side Plate	1	33	732W33	M16 Nut	1
11	732W11	Rotor	1	34	732W34	Silencer	1
12	732W12	Vane	5	35	732W35	W-Hose Joint	1
13	732W13	Cylinder Set	1	36	732W36	W-Seal	1
13-1	732W13-1	Spring Pin (Ø3 x 5)	3	37	732W37	Water Proof Seal	1
13-2	732W13-2	O-Ring (P7)	4	38	732W38	Pad LP	1
14	732W14	L-Side Plate	1	38'	732W38-1	Pad MP	1
15	732W15	L-Bearing Case	1	39	732W39	Washer (M5)	4
16	732W16	Shaft With Head	1	40	732W40	Screw (M5 x 6)	4
17	732W17	H/R Key (3 x 13)	1	41	732W41	Cap Screw (M5 x 15)	1
18	732W18	Pad Retainer	1	42	732W42	W-Hose (4mm)	1
19	732W19	Thim	1	43	732W43	Anchor Assy.	1
20	732W20	Retainer Nut	1	44	732W44	Strainer	1
21	732W21	Snap Ring	1	45	732W45	Binder	2
22	732W22	Snap Ring (IR12)	1	46	732W46	Screw (M5 x 10)	1
23	732W23	O-Ring (P8)	2	47	732W47	Bearing (60002RS)	1