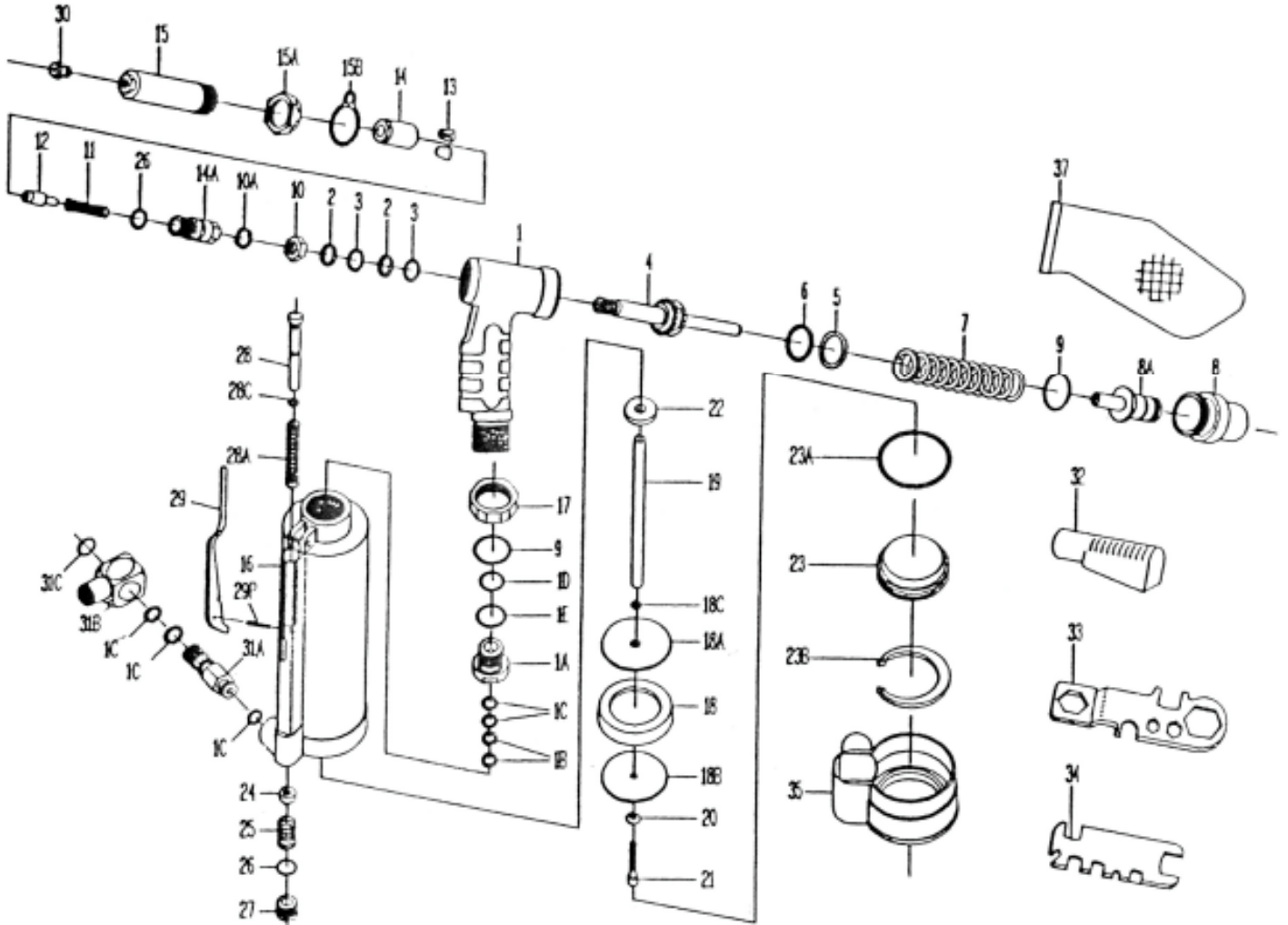




GISON Pneumatic Tools

GP-485L Air Hydraulic Riveter



PARTS LIST

◆ : Consuming Part

No.	Part No.	Description	Qty.	No.	Part No.	Description	Qty.
01	485L01	Hydraulic Section	1	20	485L20	Washer	1
01A	485L01A	Plunger Rod Guide	1	21	485L21	Lock Screw	1
01B	485L01B	Back-Up Ring	2	22	485L22	Bumper Ring	1
01C	485L01C	O-Ring	5	22A	485L22A	Piston Ass'y. (18-22) (ns)	1
01D	485L01D	O-Ring	1	23	485L23	Air Cylinder Cap	1
01E	485L01E	O-Ring	1	23A	485L23A	O-Ring	1
02	485L02	Back-Up Ring	2	23B	485L23B	Retaining Ring	1
03	485L03	O-Ring	2	24	485L24	Throttle Valve	1
04	485L04	Hydraulic Plunger	1	25	485L25	Throttle Valve Spring	1
05	485L05	Back-Up Ring	1	26	485L26	O-Ring	2
06	485L06	O-Ring	1	27	485L27	Valve Plug	1
07	485L07	Return Spring (Y)	1	28	485L28	Valve Tube	1
08	485L08	Rear Gland	1	28A	485L28A	Valve Tube Spring	1
09	485L09	O-Ring	1	28C	485L28C	O-Ring	1
10	485L10	Nut	1	29	485L29	Lever	1
10A	485L10A	Wave Washer	1	29P	485L29P	Roll Pin	1
11	485L11	Spring	1	30	485L30	Nosepiece 3/32" (2.4mm)	1
12	485L12	Jaw Pusher	1		485L30A	Nosepiece 1/8" (3.2mm)	1
13	485L13	Jaw "M"	2		485L30B	Nosepiece 5/32" (4.0mm)	1
14	485L14	Jaw Housing	1		485L30C	Nosepiece 3/16" (4.8mm)	1
14A	485L14A	Jaw Housing Coupler	1		485L30D	Nosepiece 3/16" (4.8mm)-"T" Rivet (Opt.)	1
15	485L15	Head	1	31	485L31	Swivel Joint Ass'y. (31A-31C) (ns)	1
15A	485L15A	Lock Nut	1	31A	485L31A	Male Inlet Body (V)	1
15B	485L15B	Hanger (Opt.)	1	31B	485L31B	Female Inlet Body (1/4"-18NPTF)	1
16	485L16	Air Cylinder Body	1	31C	485L31C	Snap Ring	1
17	485L17	Lock Nut	1	32	485L32	Deflector	1
18	485L18	Packing Ring	1	33	485L33	Multi-Wrench (A)	1
18A	485L18A	Front Head Disc	1	34	485L34	Multi-Wrench (B)	1
18B	485L18B	Rear Head Disc	1	35	485L35	Rubber Boot	1
18C	485L18C	O-Ring	1	37	485L37	Mandrel Collector (Opt.)	1