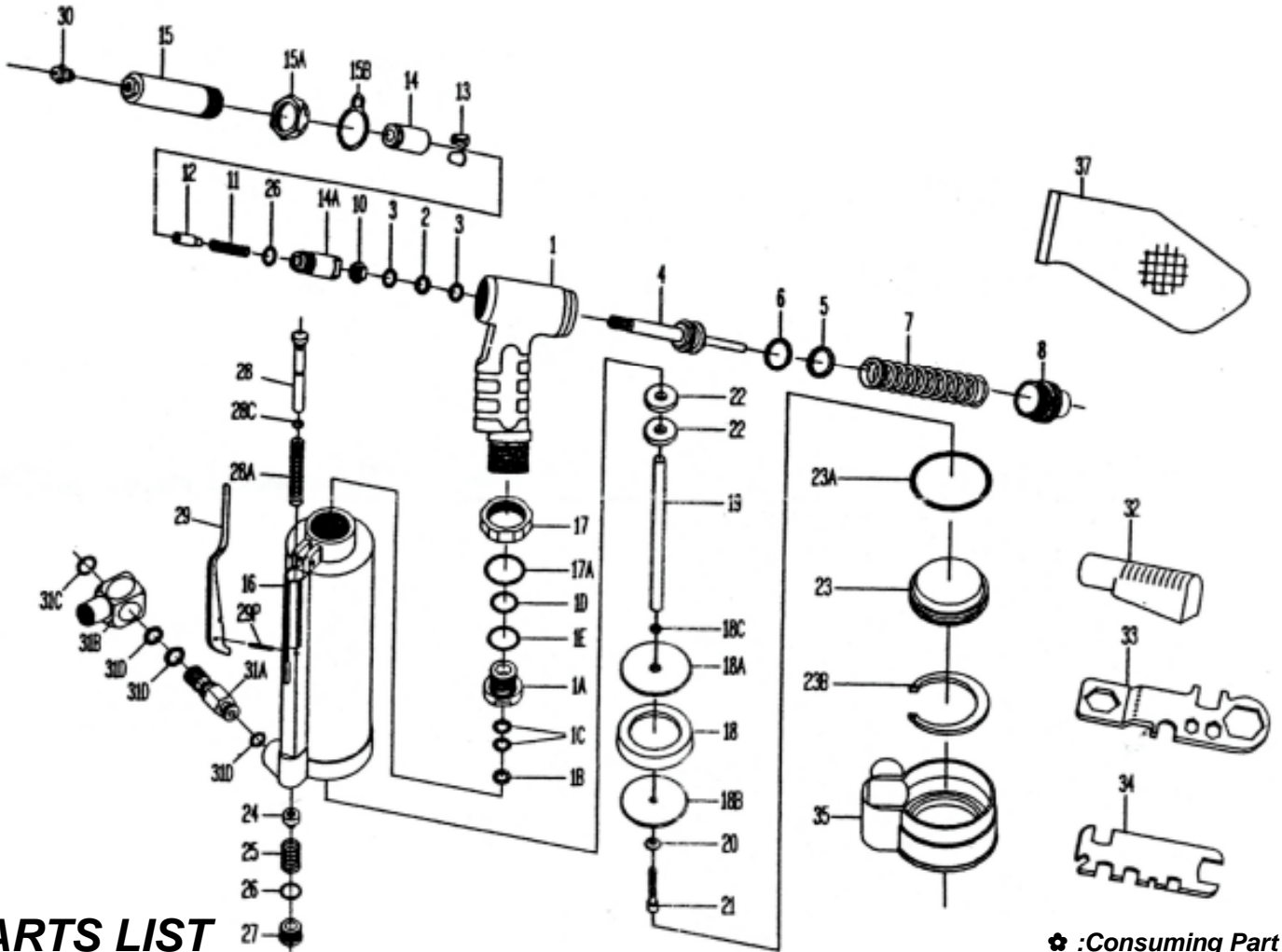




GISON Pneumatic Tools

GP-484L Air Hydraulic Riveter



PARTS LIST

◆ : Consuming Part

| No. | Part No. | Description | Qty. | No. | Part No. | Description | Qty. |
|-----|----------|---------------------|------|-----|----------|--|------|
| 01 | 484L01 | Hydraulic Section | 1 | 21 | 484L21 | Lock Screw | 1 |
| 01A | 484L01A | Plunger Rod Guide | 1 | 22 | 484L22 | Bumper Ring | 2 |
| 01B | 484L01B | Back-Up Ring | 1 | 22A | 484L22A | Piston Ass'y. (18-22) (ns) | 1 |
| 01C | 484L01C | O-Ring | 2 | 23 | 484L23 | Air Cylinder Cap | 1 |
| 01D | 484L01D | O-Ring | 1 | 23A | 484L23A | O-Ring | 1 |
| 01E | 484L01E | O-Ring | 1 | 23B | 484L23B | Retainer Ring | 1 |
| 02 | 484L02 | Back-Up Ring | 1 | 24 | 484L24 | Throttle Valve Body | 1 |
| 03 | 484L03 | O-Ring | 2 | 25 | 484L25 | Throttle Valve Spring | 1 |
| 04 | 484L04 | Hydraulic Plunger | 1 | 26 | 484L26 | O-Ring | 2 |
| 05 | 484L05 | Back-Up Ring | 1 | 27 | 484L27 | Valve Plug | 1 |
| 06 | 484L06 | O-Ring | 1 | 28 | 484L28 | Valve Tube Ass'y | 1 |
| 07 | 484L07 | Return Spring (Y) | 1 | 28A | 484L28A | Valve Tube Spring | 1 |
| 08 | 484L08 | Rear Gland | 1 | 28C | 484L28C | O-Ring | 1 |
| 10 | 484L10 | Nut | 1 | 29 | 484L29 | Lever | 1 |
| 11 | 484L11 | Spring | 1 | 29P | 484L29P | Roll Pin | 1 |
| 12 | 484L12 | Jaw Pusher | 1 | 30 | 484L30 | Nosepiece 3/32" (2.4mm) | 1 |
| 13 | 484L13 | Jaw "M" | 2 | | 484L30A | Nosepiece 1/8" (3.2mm) | 1 |
| 14 | 484L14 | Jaw Housing | 1 | | 484L30B | Nosepiece 5/32" (4.0mm) | 1 |
| 14A | 484L14A | Jaw Housing Coupler | 1 | | 484L30C | Nosepiece 3/16" (4.8mm) | 1 |
| 15 | 484L15 | Head | 1 | | 484L30D | Nosepiece 3/16" (4.8mm)-"T" Rivet (Opt.) | 1 |
| 15A | 484L15A | Lock Nut | 1 | 31 | 484L31 | Swivel Joint Ass'y. (31A-31D) (ns) | 1 |
| 15B | 484L15B | Hanger (Opt.) | 3 | 31A | 484L31A | Male Inlet Body (V) | 1 |
| 16 | 484L16 | Air Cylinder Body | 1 | 31B | 484L31B | Female Inlet Body (1/4"-18NPTF) | 1 |
| 17 | 484L17 | Lock Nut | 1 | 31C | 484L31C | Snap Ring | 1 |
| 17A | 484L17A | O-Ring | 1 | 31D | 484L31D | O-Ring | 3 |
| 18 | 484L18 | Packing Ring | 1 | 32 | 484L32 | Deflector | 1 |
| 18A | 484L18A | Front Head Disc | 1 | 33 | 484L33 | Multi-Wrench (A) | 1 |
| 18B | 484L18B | Rear Head Disc | 1 | 34 | 484L34 | Multi-Wrench (B) | 1 |
| 18C | 484L18C | O-Ring | 1 | 35 | 484L35 | Rubber Boot | 1 |
| 19 | 484L19 | Plunger Rod | 1 | 37 | 484L37 | Mandrel Collector (Opt.) | 1 |
| 20 | 484L20 | Washer | 1 | | | | |