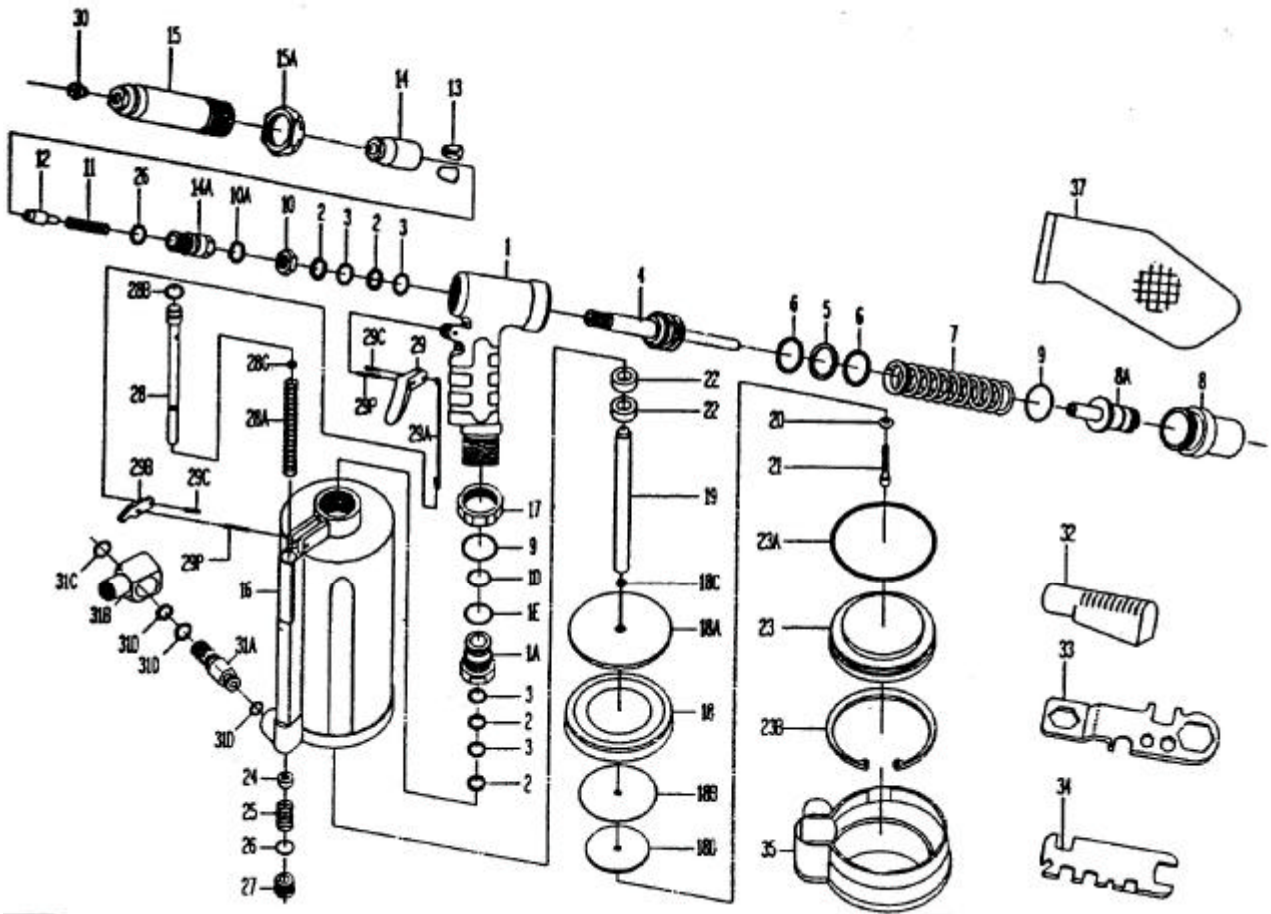


# GISON

## GP-147T Air Hydraulic Riveter



### PARTS LIST

✳ : Consuming Part

No.	Part No.	Description	Qty.	No.	Part No.	Description	Qty.
1	147T01	Hydraulic Section	1	22	147T22	Bumper Ring	2
1A	147T01A	Plunger Rod Guide	1	22A	147T22A	Piston Ass'y (18-22) (ns)	
1D	147T01D	O-Ring	1	23	147T23	Air Cylinder Cap	1
1E	147T01E	O-Ring	1	23A	147T23A	O-Ring	1
2	147T02	Back-Up Ring	4	23B	147T23B	Retaining Ring	1
3	147T03	O-Ring	4	24	147T24	Throttle Valve	1
4	147T04	Hydraulic Plunger	1	25	147T25	Throttle Valve Spring	1
5	147T05	Back-Up Ring	1	26	147T26	O-Ring	2
6	147T06	O-Ring	1	27	147T27	Valve Plug	1
7	147T07	Return Spring (Y)	1	28	147T28	Valve Tube	1
8	147T08	Rear Gland	1	28A	147T28A	Valve Tube Spring	1
8A	147T08A	Guide Tube	1	28B	147T28B	O-Ring	1
9	147T09	O-Ring	2	28C	147T28C	O-Ring	1
10	147T10	Nut	1	29	147T29	Lever	1
10A	147T10A	Wave Washer	1	29A	147T29A	Linkage	1
11	147T11	Spring	1	29B	147T29B	Rocker Arm	1
12	147T12	Jaw Pusher	1	29C	147T29C	Roll Pin	2
13	147T13	Jaw "L"	2	29P	147T29P	Roll Pin	2
14	147T14	Jaw Housing	1	30	147T30	Nosepiece 3/16" (4.8mm)	1
14A	147T14A	Jaw Housing Coupler	1		147T30A	Nosepiece 3/16" (4.8mm)-"T" Rivet (Opt.)	1
15	147T15	Head	1		147T30B	Nosepiece 1/4" (6.4mm)	1
15A	147T15A	Lock Nut	1		147T30C	Nosepiece 1/4" (6.4mm) -"T" Rivet (Opt.)	1
16	147T16	Air Cylinder Body	1	31	147T31	Swivel Joint Ass'y (31A-31D) (ns)	1
17	147T17	Lock Nut	1	31A	147T31A	Male Inlet Body	1
18	147T18	Packing Ring	2	31B	147T31B	Female Inlet Body (1/4"-18NPTF)	1
18A	147T18A	Front Head Disc	1	31C	147T31C	Snap Ring	1
18B	147T18B	Rear Head Disc	1	31D	147T31D	O-Ring	3
18C	147T18C	O-Ring	1	32	147T32	Deflector	1
18D	147T18D	Rear Disc	1	33	147T33	Multi-Wrench (A)	1
19	147T19	Plunger Rod	1	34	147T34	Multi-Wrench (B)	1
20	147T20	Washer	1	35	147T35	Rubber Boot	1
21	147T21	Lock Screw	1	37	147T37	Mandrel Collector (Opt.)	1