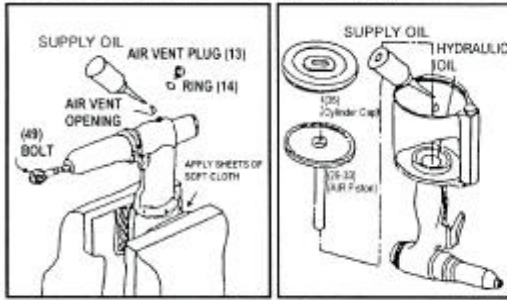


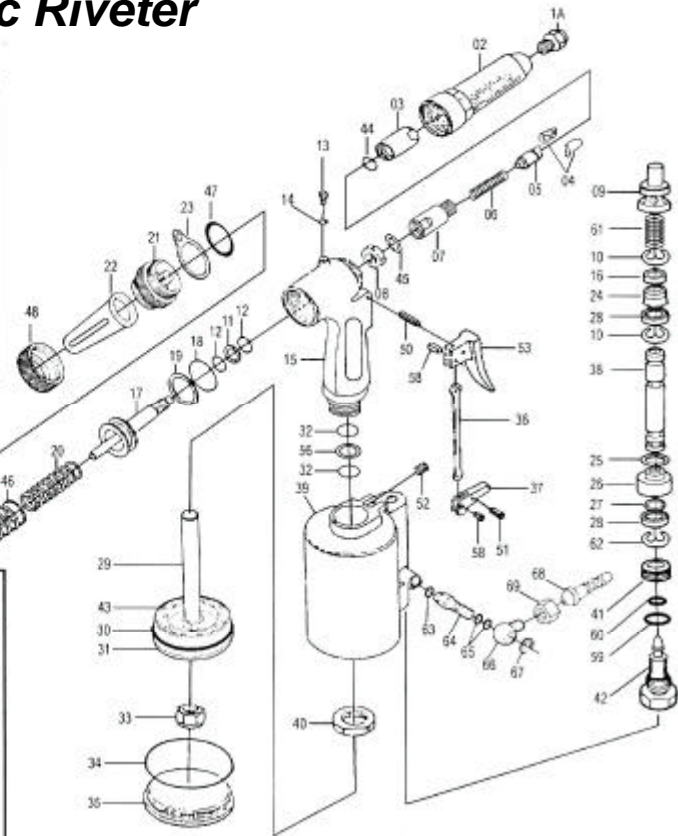
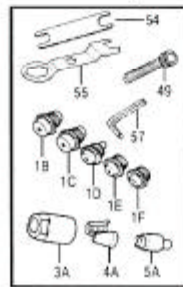
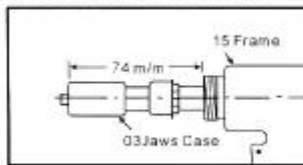
吉生 GISON

GP-101H Air Hydraulic Riveter

ADDING OIL METHOD (一) (二)



ADJUSTING LENGTH



PARTS LIST

✳ : Optional Accessories

Item No.	Part No.	Description	Qty.	Item No.	Part No.	Description	Qty.
1A	101H01A	Nosepiece 6.4 mm (1/4")	1	29	101H29	Air Piston Rod	1
1B	101H01B	Nosepiece 5.5 mm (7/32")	1	30	101H30	Air Piston Board	1
1C	101H01C	Nosepiece 4.8 mm (3/16")	1	31	101H31	Cup Packing	1
1D	101H01D	Nosepiece 4.0 mm (5/32")	1	32	101H32	O-Ring	2
1E	101H01E	Nosepiece 3.2 mm (1/8")	1	33	101H33	Rock Nut (M8 ×11L)	1
1F	101H01F	Nosepiece 2.4 mm (3/32")	1	34	101H34	O-Ring (G80)	1
02	101H02	Nose Housing (93L)	1	35	101H35	Cylinder Cap	1
✳ 02L	101H02L	Long Nose Housing (202L)	1	36	101H36	Trigger Rod	1
03	101H03	Jaws Case (3/16"~1/4")	1	37	101H37	Trigger Lever	1
03A	101H03A	Jaws Case (3/32"~5/32")	1	38	101H38	Valve Tube	1
04	101H04	Jaws (6 ×12) (3/16"~1/4")	2	39	101H39	Air Cylinder	1
04A	101H04A	Jaws (5 ×10) (3/32"~5/32")	2	40	101H40	Frame Lock Nut	1
05	101H05	Jaw Pusher (3/16"~1/4")	1	41	101H41	Nipple Screw	1
05A	101H05A	Jaw Pusher (3/32"~5/32")	1	42	101H42	End Plug	1
06	101H06	Jaw Case Spring	1	43	101H43	Rubber Cushion	1
07	101H07	Jaw Case Back Part	1	44	101H44	Jaw Case O-Ring (S12)	1
✳ 07L	101H07L	Long Jaw Case Back Part	1	45	101H45	Washer Ring	1
08	101H08	Jaw Case Lock Nut	1	46	101H46	Return Spring (Outer)	1
09	101H09	Valve Pusher	1	47	101H47	Frame Cap O-Ring (S26)	1
10	101H10	E-Ring (E6)	2	48	101H48	Cap Nut	1
11	101H11	Back Up Ring	2	49	101H49	Bolt Plug (3/8"-24UNF ×35L)	1
12	101H12	O-Ring	4	50	101H50	Pin (3 ×20)	1
13	101H13	Air Blow Plug (M8x8)	1	51	101H51	Lever Pin (3 ×20)	1
14	101H14	Packing	1	52	101H52	Lock Screw (M6 × 5L)	1
15	101H15	Frame	1	53	101H53	Trigger	1
16	101H16	Collar For Valve Tube	1	54	101H54	Spanner 17 And 19	1
17	101H17	Oil Piston	1	55	101H55	Spanner	1
18	101H18	O-Ring (P24)	1	56	101H56	Back Up Ring	1
19	101H19	Back Up Ring (P24)	1	57	101H57	Hex. Wrench M5 And M8	2
20	101H20	Return Spring (Inner)	1	58	101H58	Trigger Pin (3 ×8)	1
21	101H21	Frame Cap	1	59	101H59	O-Ring (P12)	1
22	101H22	Safety Cap	1	60	101H60	Seal	1
23	101H23	Hanger Clip	1	61	101H61	Pusher Spring	1
24	101H24	Air Valve Seal	1	62	101H62	E-Ring (E6)	1
25	101H25	O-Ring (P10A)	1	✳ 63~67	101H63~67	Universal Joint	1
26	101H26	Valve Seat	1	✳ 68	101H68	Air Hose Joint (5/16")	1
27	101H27	O-Ring (4.4 ×2.62)	1	✳ 69	101H69	Air Hose Joint Nut (1/4")	1
28	101H28	Ring Seal Washer	2	✳ 70	101H70	Outer Thread Joint (PM20)	1