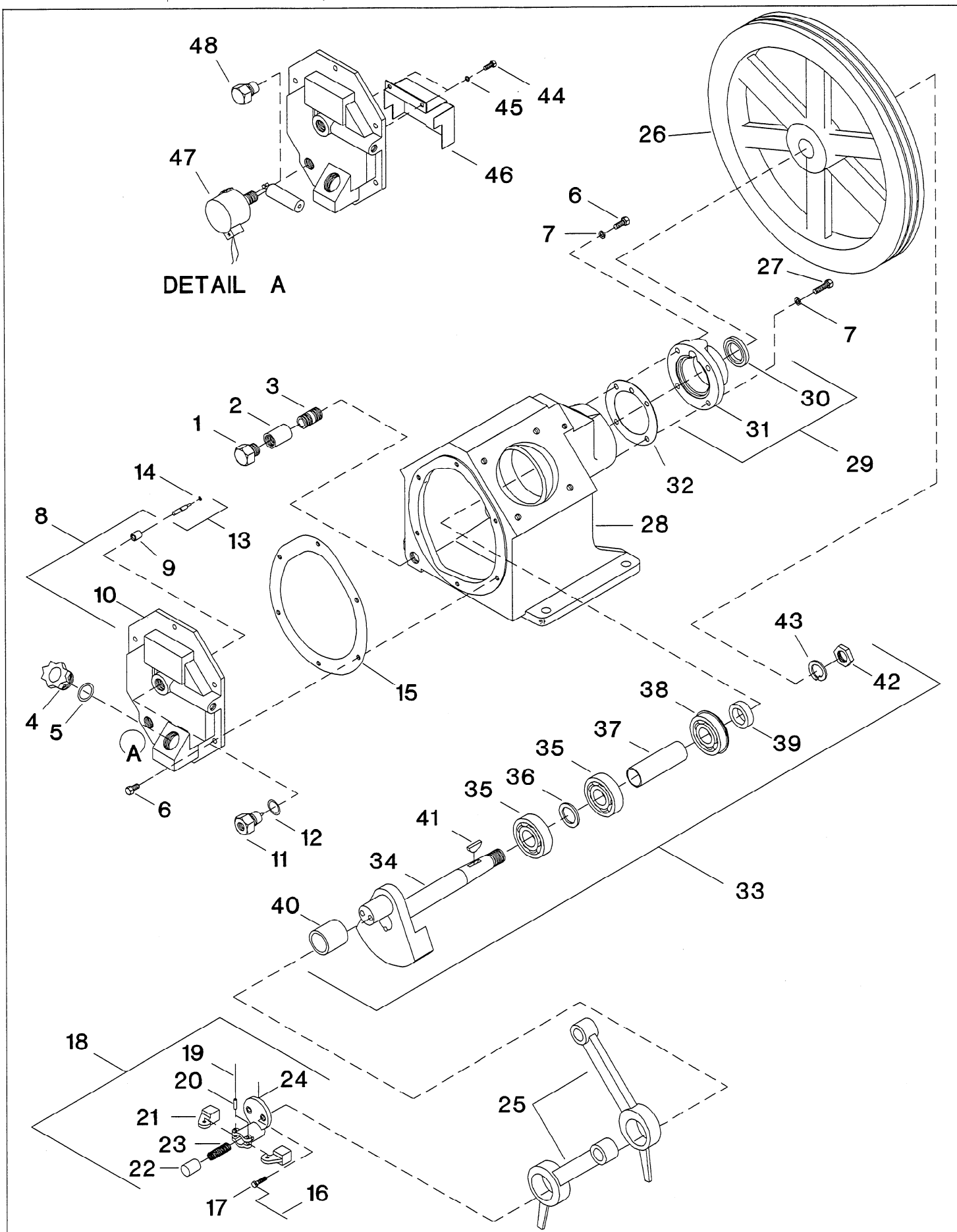
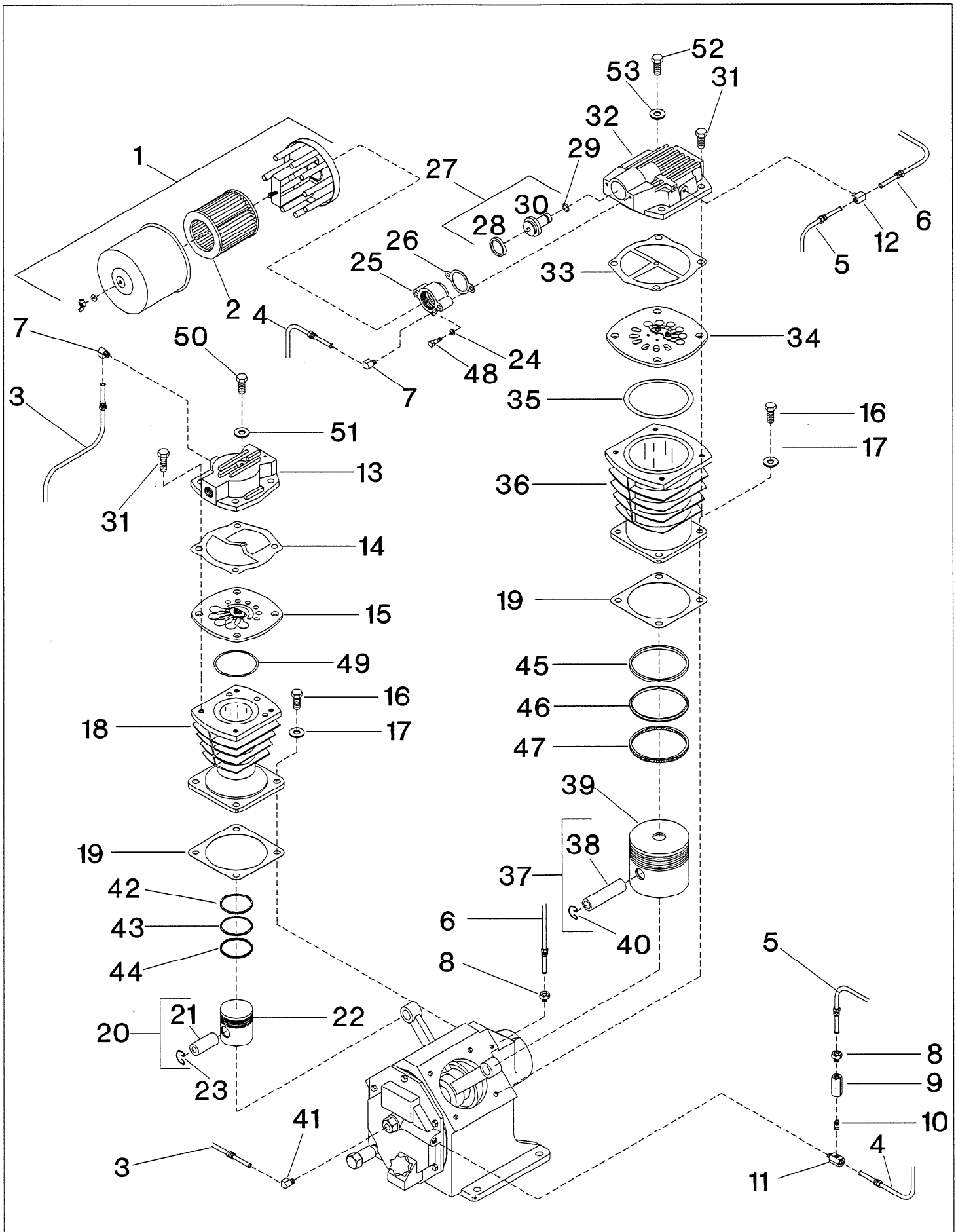


FIGURE 1. COMPRESSOR PUMP ASSEMBLY (VIEW 1).



REF. NO.	PART NO.	DESCRIPTION	QTY.	SPARES		
				1	2	3
1-1	95344651	PLUG, PIPE - HEX HEAD 1/2"	1			
1-2	32179061	COUPLING, PIPE - 1/2"	1			
1-3	95273330	NIPPLE, PIPE	1			
1-4	32247843	PLUG, OIL FILL	1			
1-5	32247850	O-RING, OIL FILL PLUG	1	1	1	2
1-6	95105250	CAPSCREW, HEX - 5/16-18X1"	8			
1-7	95674651	WASHER, COPPER	2			
1-8	32293938	ASSEMBLY, FRAME END COVER	1			
1-9	37127057	● BUSHING, PILOT VALVE	1			
1-10	NSS	● COVER, FRAME END	1			
1-11	37113701	VALVE, PILOT	1			
1-12	30346597	WASHER, COPPER - 7/8"	1		1	1
1-13	32028698	ASSEMBLY, THRUST PIN	1			
1-14	95210225	● O-RING, THRUST PIN	1	1	1	2
1-15	32294035	GASKET, FRAME END COVER	1	1	1	2
1-16	90799289	LOCKWIRE, 12 GAUGE - 5"	1			
1-17	30278667	CAPSCREW, LOCK - 3/8-16X7/8"	2			
1-18	30289110	ASSEMBLY, CRANKPIN CAP	1			
1-19	32006587	● LOCKWIRE, 12 GAUGE - 4"	1			
1-20	30215008	● PIN, CENTRIFUGAL UNLOADER WEIGHT	2			
1-21	30221725	● WEIGHT, CENTRIFUGAL UNLOADER	2			
1-22	30216113	● PLUNGER, CENTRIFUGAL UNLOADER	1			
1-23	30416978	● SPRING, CENTRIFUGAL UNLOADER	1			1
1-24	30210447	● BODY, CRANKPIN CAP	1			
1-25	32198160	ROD, CONNECTING	2		2	2
1-26	32496440	BELTWHEEL	1			
1-27	95079984	CAPSCREW, HEX - 5/16-18X1-1/4"	2			
1-28	32203192	FRAME, COMPRESSOR	1			
1-29	32498008	ASSEMBLY, SHAFT END COVER	1			
1-30	32497810	● SEAL, OIL	1		1	2
1-31	NSS	● COVER, SHAFT END	1			
1-32	32294027	GASKET, SHAFT END COVER	1	1	1	2
1-33	32294431	ASSEMBLY, CRANKSHAFT	1			
1-34	NSS	● ASSEMBLY, DISC & SHAFT	1			
1-35	95200770	● BEARING, BALL	2			
1-36	32203218	● SPACER, INNER BEARING	1			
1-37	32203226	● SPACER, OUTER BEARING	1			
1-38	95305546	● BEARING, BALL - WITH SNAP RING	1			
1-39	37127941	● RING, BEARING RETAINER	1			
1-40	30210165	● BUSHING, CRANKPIN	1			
1-41	95433173	● KEY, WOODRUFF	1			
1-42	95098315	● NUT, BELTWHEEL -7/8-14	1			
1-43	95043162	● LOCKWASHER, SPRING - 7/8"	1			
DETAIL A						
1-44	95053070	CAPSCREW, HEX - 1/4-20X1/2"	2			
1-45	95043196	LOCKWASHER, SPRING - 1/4"	2			
1-46	32270654	BAFFLE, LOW OIL LEVEL SWITCH	1			
1-47	32276313	SWITCH, LOW OIL LEVEL	1			
1-48	97330245	OIL, SIGHTGLASS (IF LOW OIL LEVEL SWITCH IS NOT USED)	1			

FIGURE 2. COMPRESSOR PUMP ASSEMBLY (VIEW 2).



REF. NO.	PART NO.	DESCRIPTION	QTY.	SPARES		
				1	2	3
2-1	32230542	FILTER, AIR INLET - COMPLETE	1			
2-2	32012957	● ELEMENT, FILTER - 10 MICRON	1	1	1	1
2-3	32293953	ASSEMBLY, TUBE - PILOT VALVE/HIGH PRESSURE HEAD	1			
2-4	32201444	ASSEMBLY, TUBE - FRAME END COVER TEE/INLET	1			
2-5	32293961	ASSEMBLY, TUBE - FEC CHECK VALVE/LOW PRESSURE HEAD	1			
2-6	32293946	ASSEMBLY, TUBE - BREATHER	1			
2-7	95031860	ELBOW, TUBE - 5/16X1/8"	2			
2-8	95082483	CONNECTOR, TUBE - 5/16X1/8"	2			
2-9	32001141	VALVE, CHECK	1			
2-10	95796017	NIPPLE, CLOSE - 1/8X3/4"	1			
2-11	32203242	CONNECTOR, MALE - 5/16X1/4"	1			
2-12	95007522	TEE, MALE BRANCH - 5/16X1/8"	1			
2-13	32294084	HEAD, HIGH PRESSURE	1			
2-14	32294043	GASKET, HEAD - HIGH PRESSURE	1	1	1	2
2-15	32293904	ASSEMBLY, VALVE PLATE - HIGH PRESSURE (SEE FIG. 4)	1			
2-16	95053567	CAPSCREW, HEX - 1/2-13X1-1/4"	8			
2-17	95674701	GASKET, COPPER WASHER - 1/2"	8			
2-18	32295248	CYLINDER - 2-3/4" - 2ND STAGE	1			
2-19	32294019	GASKET, FLANGE	2	2	2	4
2-20	32496614	COMPLETE, PISTON/PIN - HIGH PRESSURE	1		1	1
2-21	32182818	● PIN, PISTON	1			
2-22	NSS	● PISTON - 2-3/4"	1			
2-23	30287791	● RING, LOCK	2			
2-24	95043188	LOCKWASHER, SPRING - 5/16"	2			
2-25	32230633	COVER, UNLOADER	1			
2-26	32182826	GASKET, UNLOADER COVER	1	1		
2-27	32256265	ASSEMBLY, PISTON UNLOADER	1	1	1	2
2-28	32254740	● SEAL, UNLOADER PISTON	1	1	1	2
2-29	32188385	● O-RING, UNLOADER PISTON	1	1	1	2
2-30	NSS	● PISTON, UNLOADER	1			
2-31	95104188	CAPSCREW, HEX - 1/2-13X1-3/4"	8			
2-32	32499899	HEAD - LOW PRESSURE	1			
2-33	32294050	GASKET, HEAD - LOW PRESSURE	1	1	1	2
2-34	32293912	ASSEMBLY, VALVE PLATE - LOW PRESSURE (SEE FIG. 3)	1			
2-35	32294076	O-RING, VALVE PLATE	1	1	1	2
2-36	32295271	CYLINDER - 5" - 1ST STAGE	1			
2-37	32496580	COMPLETE, PISTON/PIN - LOW PRESSURE	1	1	1	2
2-38	30297022	● PIN, PISTON	1			
2-39	NSS	● PISTON, LOW PRESSURE (5")	1			
2-40	30287791	● RING, LOCK	2		1	1
2-41	95110441	ELBOW, 5/16X1/4" TUBE	1			
2-42	32294167	SET, HIGH PRESSURE (2.75") PISTON RINGS	1			
2-43	32294175	RING, SCRAPER (2.75")	1			
2-44	32295792	RING, OIL CONTROL (2.75")	1			
2-45	32294209	SET, LOW PRESSURE (5") PISTON RINGS	1			
2-46	32294217	RING, SCRAPER (5")	1			
2-47	32295784	RING, OIL CONTROL (5")	1			
2-48	95079927	CAPSCREW, 5/16-18X1-3/4" HEX HEAD	2			
2-49	32294068	O-RING, HIGH PRESSURE VALVE PLATE	1	1	1	2
2-50	95318978	CAPSCREW, 1/4-28X2-1/4" HEX HEAD	1			
2-51	95674677	WASHER, 3/8" COPPER	1			
2-52	32294373	CAPSCREW, 3/8-24X3-1/2" HEX HEAD	1			
2-53	32255903	WASHER, 1/4" COPPER	1			

FIGURE 3. LOW PRESSURE (FIRST STAGE) VALVE PLATE ASSEMBLY.

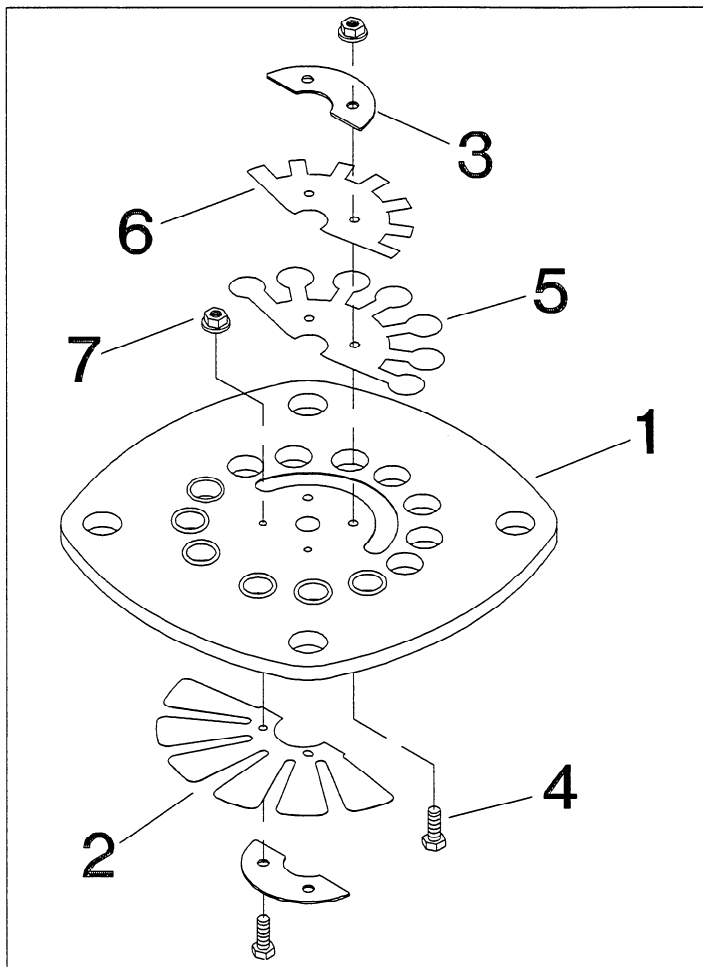
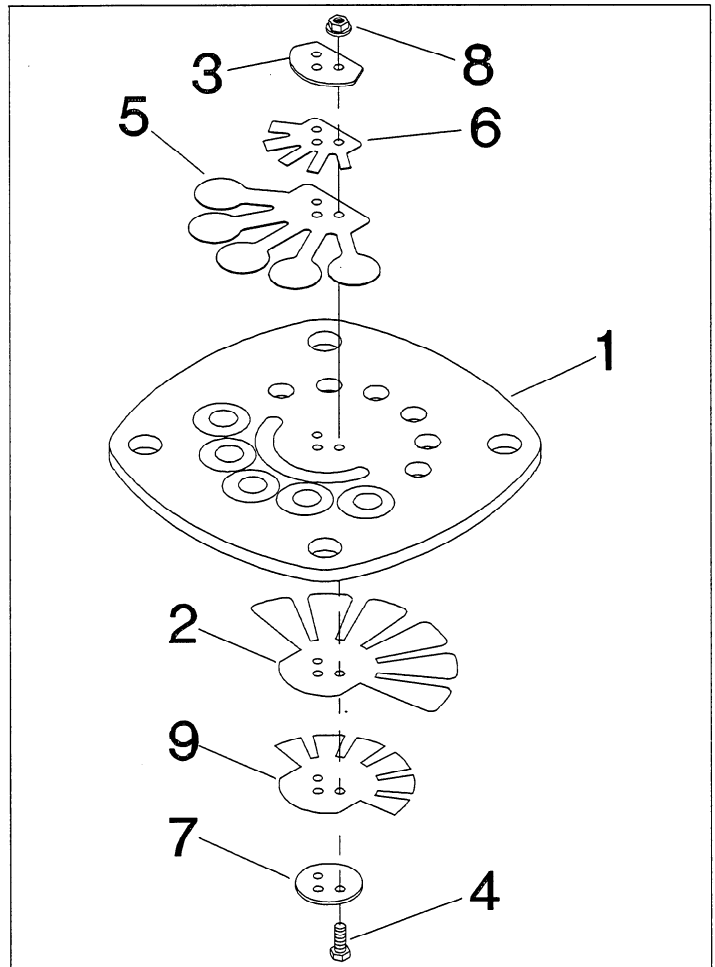


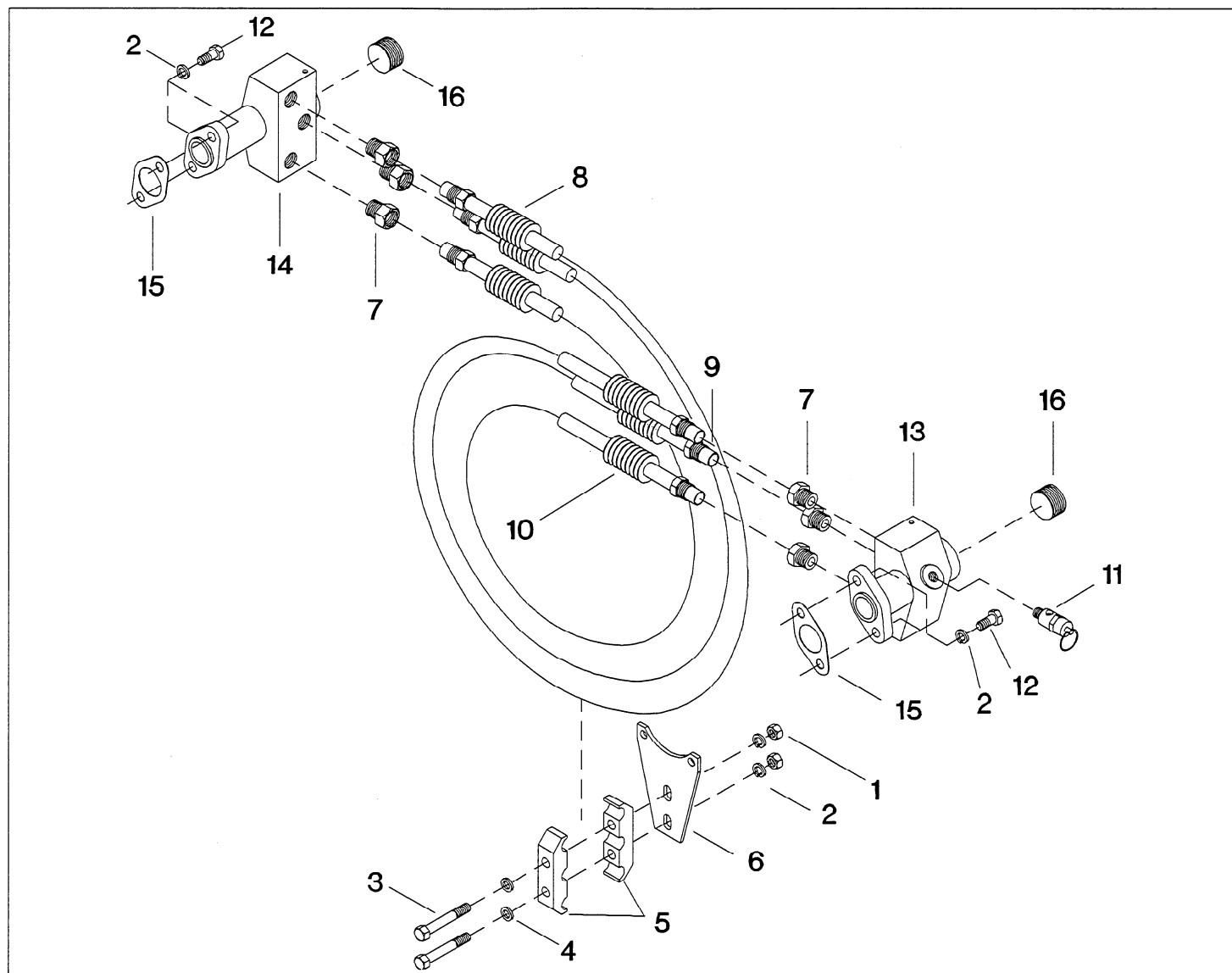
FIGURE 4. HIGH PRESSURE (SECOND STAGE) VALVE PLATE ASSEMBLY.



REF. NO.	PART NO.	DESCRIPTION	QTY.	SPARES		
				1	2	3
REF.	32293912	ASSEMBLY, LOW PRESSURE (5") VALVE PLATE	1			
3-1	32294274	PLATE, LOW PRESSURE VALVE	1			
3-2	32294324	VALVE, LOW PRESSURE INTAKE FINGER	1			
3-3	32294340	RETAINER, LOW PRESSURE INTAKE & DISCHARGE VALVES	2			
3-4	32247512	SCREW, M4X12 HEX HEAD	4			
3-5	32294332	VALVE, LOW PRESSURE DISCHARGE FINGER	1			
3-6	32294365	DAMPER, LOW PRESSURE DISCHARGE VALVE	1			
3-7	32248171	NUT, M4 HEX	4			

REF. NO.	PART NO.	DESCRIPTION	QTY.	SPARES		
				1	2	3
REF.	32293904	ASSEMBLY, HIGH PRESSURE (2.75") VALVE PLATE	1			
4-1	32294266	PLATE, HIGH PRESSURE VALVE	1			
4-2	32294282	VALVE, HIGH PRESSURE INTAKE FINGER	1			
4-3	32294316	RETAINER, HIGH PRESSURE DISCHARGE VALVE	1			
4-4	97511042	SCREW, M3X16 HEX HEAD	3			
4-5	32294290	VALVE, HIGH PRESSURE DISCHARGE	1			
4-6	32294357	DAMPER, HIGH PRESSURE DISCHARGE VALVE	1			
4-7	32294308	RETAINER, HIGH PRESSURE INTAKE VALVE	1			
4-8	97511059	NUT, M3 HEX WITH LOCKWASHER	3			
4-9	32295826	DAMPER, VALVE	1			

FIGURE 5. INTERCOOLER ASSEMBLY.



REF. NO.	PART NO.	DESCRIPTION	QTY.	SPARES		
				1	2	3
Ref.	32188666	ASSEMBLY, INTERCOOLER	1			
5-1	95077764	NUT, HEX - 3/8-16	2			
5-2	95081857	LOCKWASHER, SPRING - 3/8"	6			
5-3	95079646	CAPSCREW, HEX - 3/8-16X2-1/2"	2			
5-4	95069597	WASHER, FLAT - 3/8"	2			
5-5	32294159	CLAMP, INTERCOOLER	2			
5-6	32294142	BRACKET, INTERCOOLER CLAMP	1			
5-7	95083226	CONNECTOR, MALE - 5/8X1/2"	6			
5-8	32211708	ASSEMBLY, TUBE - #3 INTERCOOLER	1		1	2
5-9	32211690	ASSEMBLY, TUBE - #2 INTERCOOLER	1		1	2
5-10	32211682	ASSEMBLY, TUBE - #1 INTERCOOLER	1		1	2
5-11	72062185	VALVE, RELIEF - 80 PSIG	1			2
5-12	95468443	CAPSCREW, HEX - 3/8-16X1"	4			
5-13	32185787	MANIFOLD, HEAD - LP	1			
5-14	32185795	MANIFOLD, HEAD - HP	1			
5-15	32188377	GASKET, MANIFOLD	2	2	2	4
5-16	95101457	PLUG, PIPE - SQUARE COUNTERSUNK - 1"	2			