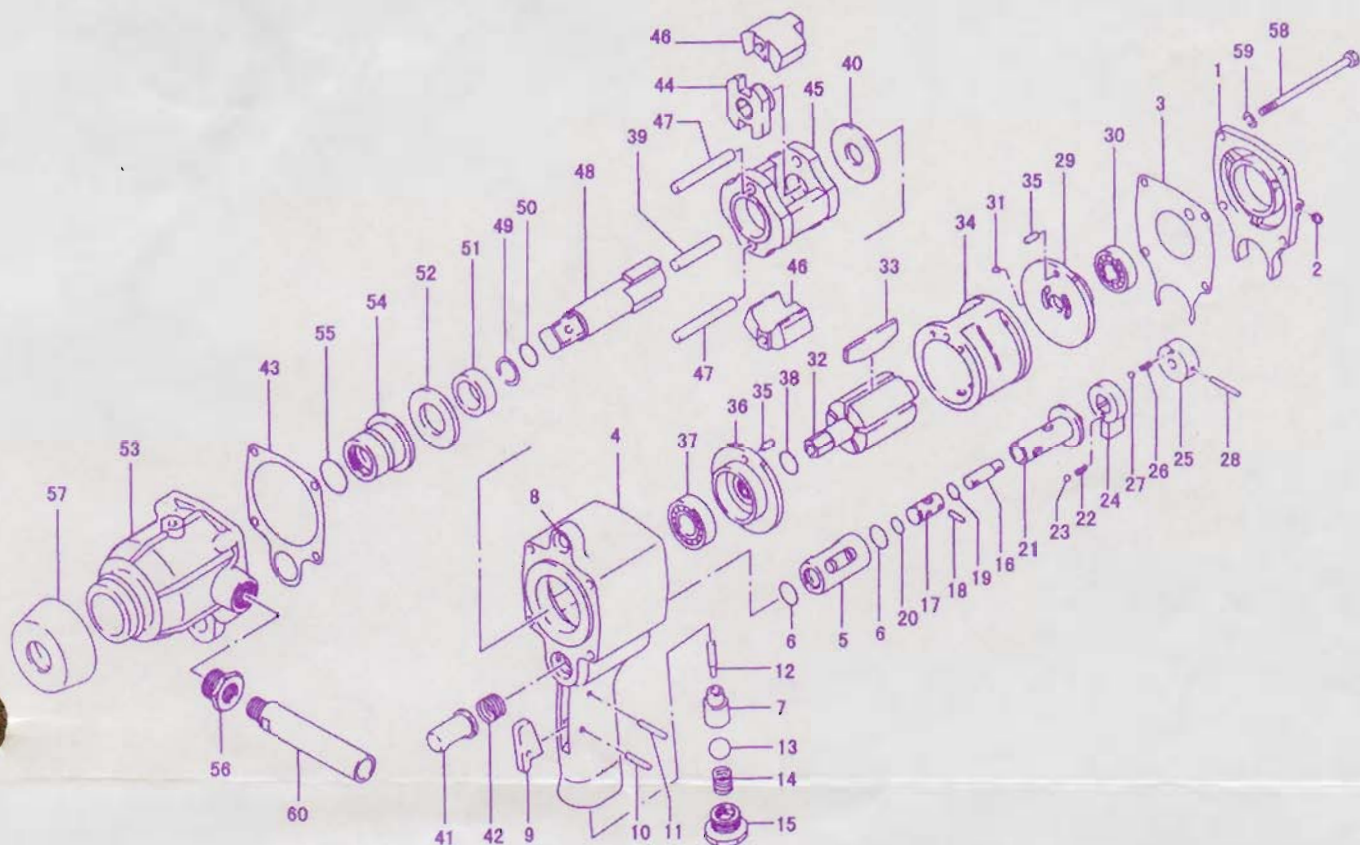




IMPACT WRENCH

19WP



| No. | Parts No. | Description | Qty | Remark | No. | Parts No. | Description | Qty | Remark |
|-----|-----------|---------------------|-----|--------|-----|-----------|----------------------|-----|--------|
| 1 | 122461 | HEAD | 1 | | 31 | SPW03008 | SPRING PIN | 1 | |
| 2 | PT 1/8 | OIL CAP | 1 | | 32 | 122282B | ROTOR | 1 | |
| 3 | 122217B | TOP SHEET PACKING | 1 | | 33 | 122227 | ROTOR VANE | 5 | |
| 4 | 122216G | CYLINDER CASE | 1 | | 34 | 122225C | CYLINDER | 1 | |
| 5 | 122220C | REVERSE VALVE BUSH | 1 | | 35 | SPW05012 | SPRING PIN | 2 | |
| 6 | OP-18 | O-RING | 2 | | 36 | 122281C | BOTTOM BEARING CASE | 1 | |
| 7 | 122219B | THROTTLE VALVE BUSH | 1 | | 37 | 6203Z | BOTTOM ROTOR BEARING | 1 | |
| 8 | SPW08010 | SPRING PIN | 1 | | 38 | OP-16 | O-RING | 1 | |
| 9 | 126204 | THROTTLE LEVER | 1 | | 39 | 12239 | CENTER ROD | 1 | |
| 10 | NR400198 | THROTTLE LEVER PIN | 1 | | 40 | 121207B | SPACE COLLAR | 1 | |
| 11 | SPW04026 | LEVER STOP PIN | 1 | | 41 | 126205 | MUFFLER PIPE | 1 | |
| 12 | 122267 | THROTTLE ROD | 1 | | 42 | 126174B | SPRING | 1 | |
| 13 | EB 5/8 | THROTTLE VALVE | 1 | | 43 | 122229B | BOTTOM SHEET PACKING | 1 | |
| 14 | 126203B | THROTTLE SPRING | 1 | | 44 | 122189B | DRIVER | 1 | |
| 15 | 122218 | INLET BUSH | 1 | | 45 | 12288D | HAMMER CASE | 1 | |
| 16 | 122460B | ADJUST VALVE SHAFT | 1 | | 46 | 122186C | HAMMER | 2 | |
| 17 | 122222D | ADJUST VALVE | 1 | | 47 | 12289 | HAMMER STUD | 2 | |
| 18 | SPW02014 | SPRING PIN | 1 | | 48 | 122198B | CHUCK DRIVER (CLIP) | 1 | |
| 19 | OP-10A | O-RING | 1 | | 49 | 12489 | CLIP | 1 | |
| 20 | OP-10 | O-RING | 1 | | 50 | OR-10 | O-RING | 1 | |
| 21 | 122221D | REVERSE VALVE | 1 | | 51 | 122137B | HAMMER CASE BUSH | 1 | |
| 22 | 50413 | STOP BALL SPRING | 1 | | 52 | 12243B | THRUST WASHER | 1 | |
| 23 | SB 5/32 | STOP BALL | 1 | | 53 | 122234 | FRONT CASE | 1 | |
| 24 | 121186D | REVERSE HANDLE | 1 | | 54 | 122195D | FRONT CASE BUSH | 1 | |
| 25 | 121187 | ADJUST HANDLE | 1 | | 55 | OP-25 | O-RING | 1 | |
| 26 | 11209 | STOP BALL SPRING | 1 | | 56 | H1034 | INLET BUSH | 1 | |
| 27 | SB 1/8 | STOP BALL | 1 | | 57 | 122231 | FRONT CASE GUM COVER | 1 | |
| 28 | SPW02020 | SPRING PIN | 1 | | 58 | 55566 | BOLT | 4 | |
| 29 | 122280C | TOP BEARING CASE | 1 | | 59 | WS060 | SPRING WASHER | 4 | |
| 30 | 602Z | TOP ROTOR BEARING | 1 | | 60 | 12137B | DEAD HANDLE | 1 | |