

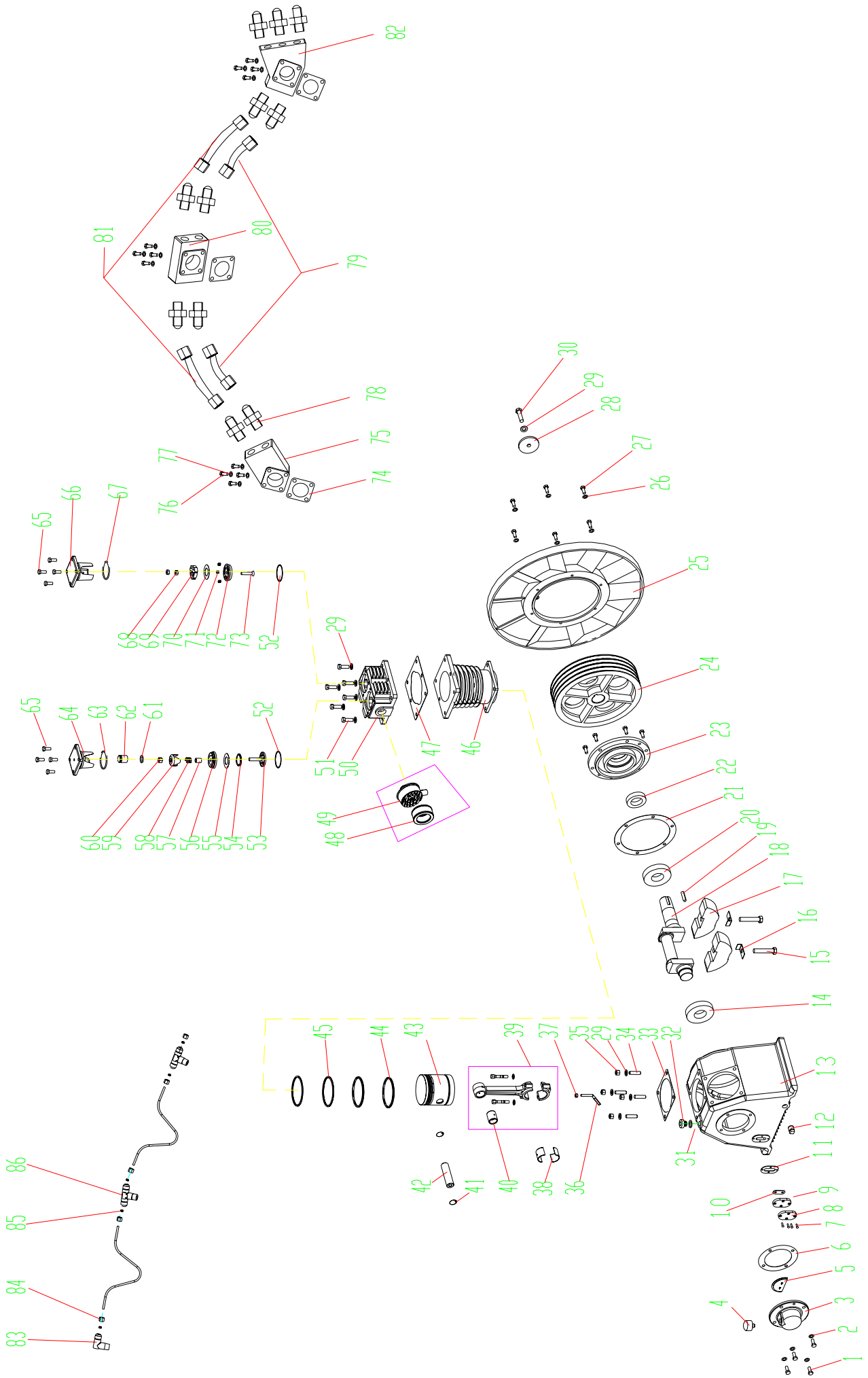
5750 DONAHUE STREET, MONTREAL, QUEBEC. H4S 1C1
TEL.: 514-336-3820, 800-390-0140 FAX: 514-745-1764
www.airtekltd.com E-MAIL info@airtekltd.com

Fu Sheng

TA-120 Pump



TA-120



| ITEM | DESCRIPTION | QTY | PART NO. |
|------|--------------------------|-----|---------------|
| 1 | BOLT, M10 X 25 | 10 | 91501-1310025 |
| 2 | COPPER WASHER | 20 | 92521-191000 |
| 3 | REAR BEARING COVER | 1 | 70134-57061 |
| 4 | BREATHER ASS'Y | 1 | 70124-57601 |
| 5 | REAR COVER OIL BAFFLE | 1 | 70134-57590 |
| 6 | REAR BRG CVR PACKING | 1 | 70134-57960 |
| 7 | GAUGE SET BOLT | 4 | 91507-2305016 |
| 8 | OIL GLASS&COVER | 1 | - |
| 9 | OIL COVER | 1 | 70124-57700 |
| 10 | OIL COVER GLASS | 1 | 70124-57750 |
| 11 | GAUGE COVER SEAL | 1 | 70124-57730 |
| 12 | CRANKCASE OIL PLUG | 1 | 90112-100404 |
| 13 | CRANKCASE | 1 | 70135-57010 |
| 14 | BEARING #30310 | 1 | 93502-30310 |
| 15 | CTR WGT MGT BOLT | 2 | 70135-56811 |
| 16 | CTR WGT LK WASHER | 2 | 70135-56830 |
| 17 | CRANKSHAFT CTR WGT | 2 | 70135-56032 |
| 18 | CRANKSHAFT | 1 | 70135-56011 |
| 19 | V-PULLEY KEY | 1 | 70134-56060 |
| 20 | BEARING #32210 | 1 | 93502-32210 |
| 21 | FRONT BEARING GASKET | 1 | 70135-57950 |
| 22 | FRONT OIL SEAL | 1 | 70134-57080 |
| 23 | FRONT BEARING COVER | 1 | 70135-57030 |
| 24 | COMPRESSOR PULLEY | 1 | 70135-76011 |
| 25 | COMP PULLEY FAN | 1 | 70135-76310 |
| 26 | WASHER | 6 | 92522-130800 |
| 27 | BOLT | 6 | 91501-2308030 |
| 28 | PULLEY THRUST WASHER | 1 | 70124-76210 |
| 29 | SPRING WASHER | 31 | 92522-131200 |
| 30 | BOLT | 1 | 91501-1312050 |
| 31 | O-RING P#18 | 1 | 93601-810018 |
| 32 | CRANKCASE OIL CAP | 1 | 70123-57190 |
| 33 | CYL & CASE PACKING | 3 | 70135-51610 |
| 34 | CYL & CASE BOLT | 12 | 70135-51810 |
| 35 | NUT | 12 | 92501-131200 |
| 36 | OIL SPLASH DIPPER | 3 | 70135-61281 |
| 37 | NUT | 3 | 92501-130800 |
| 38 | CONN.ROD CRANK PIN METL | 6 | 70125-61090 |
| 39 | CONN.ROD ASS'Y | 3 | 70125-61200 |
| 40 | CONN.ROD PISTON PIN METL | 3 | 50135-61081 |
| 41 | PISTON PIN SNAP RING | 6 | 70125-61070 |
| 42 | PISTON PIN | 3 | 70125-61120 |
| 43 | PISTON | 3 | 70135-61010 |
| 44 | OIL CONTROL RING | 6 | 70125-61050 |
| 45 | COMPRESSION RING | 6 | 70125-61030 |
| 46 | CYLINDER | 3 | 70135-51011 |
| 47 | CYL & HEAD PACKING | 3 | 70135-11610 |
| 48 | FILTER ELEMENT | 3 | 70123-66140 |
| 49 | AIR STRAINER ASS'Y | 3 | 70135-66000 |
| 50 | CYLINDER HEAD | 3 | 70135-11011 |
| 51 | BOLT | 18 | 91501-1312035 |
| 52 | I/O VALVE SEAT GASKET | 6 | 70125-11110 |
| 53 | INLET VALVE RECEIVER | 3 | 70125-31023 |
| 54 | INLET VALVE SPRING | 3 | 70125-31070 |
| 55 | I VALVE PLATE | 3 | 50125-31030 |
| 56 | INTER VALVE SEAT | 3 | 70125-31010 |

| ITEM | DESCRIPTION | QTY | PART NO. |
|------|--------------------------------|-----|------------------|
| 57 | I. VALVE UNLOAD FORK GUIDE | 3 | 70125-31090 |
| 58 | UNLOADING SPRING | 3 | 70125-11230 |
| 59 | I.VALVE UNLOAD FORK | 3 | 70125-31080 |
| 60 | SLOTTED NUT | 3 | 92517-231200 |
| 61 | O-RING P#22A | 3 | 93601-870022A |
| 62 | UNLOADING PISTON | 3 | 70125-11220 |
| 63 | O-RING G#65 | 3 | 93602-810065 |
| 64 | I. VALVE PUSH COVER | 3 | 70125-11151 |
| 65 | BOLT | 24 | 91501-1310025 |
| 66 | O. VALVE PUSH COVER | 3 | 70125-11451 |
| 67 | VITON O-RING G#65 | 3 | 93602-870065 |
| 68 | NUT | 6 | 92501-231000 |
| 69 | OUTLET VALVE RECEIVR | 3 | 70125-41025 |
| 70 | O VALVE PLATE | 3 | 70125-41030 |
| 71 | OUTLET VALVE SPRING | 9 | - |
| 72 | OUTLET VALVE SEAT | 3 | 70125-41012 |
| 73 | BOLT | 3 | 70124-41810 |
| 74 | PACKING | 3 | 70125-87510 |
| 75 | DIST. MANIFOLD #C | 1 | 70135-87030-4010 |
| 76 | BOLT | 12 | - |
| 77 | WASHER | 24 | 92522-131000 |
| 78 | OUTLET PIPE JOINT | 11 | 79920-130606 |
| 79 | COMP.BODY DIS. PIPING ASSEMBLY | 2 | 70135-87100 |
| 80 | DIST. MANIFOLD #B | 1 | 70135-87020 |
| 81 | COMP.BODY DIS. PIPING ASSEMBLY | 2 | 70135-87100 |
| 82 | DIST. MANIFOLD #A | 1 | 701312A2-87011 |
| 83 | COPPER ELBOW | 1 | 90125-150101 |
| 84 | COPPER NUT | 5 | 90128-150102 |
| 85 | COPPER RING | 5 | 90127-150202 |
| 86 | COPPER JOINT | 2 | 90126-150101 |