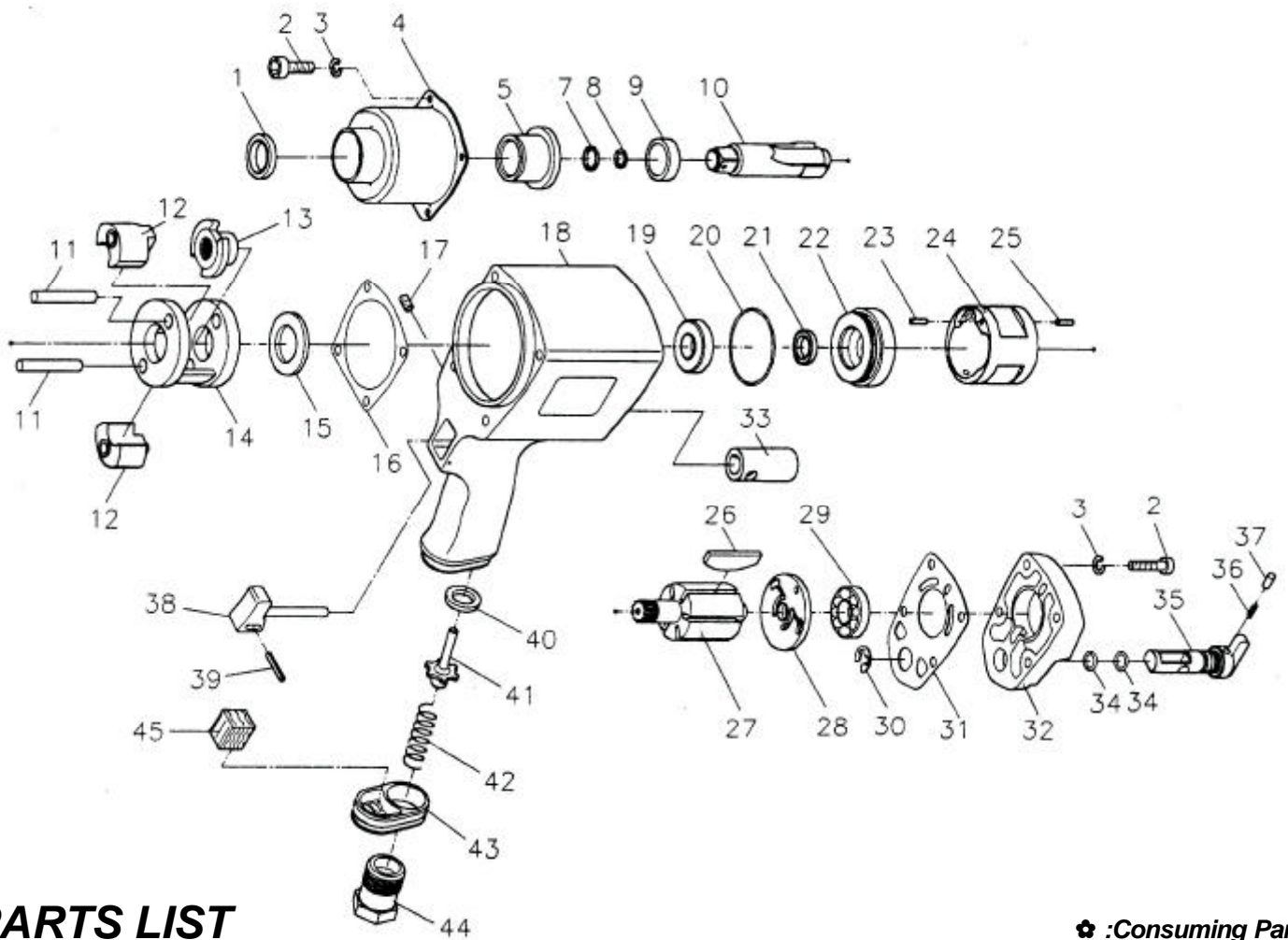


吉生 GISON

GW-19T 3/8" Heavy-Duty Impact Wrench



PARTS LIST

✦ : Consuming Part

Item No.	Part No.	Description	Qty.	Item No.	Part No.	Description	Qty.
1	19T01	Oil Seal	1	24	19T24	Cylinder	1
2	19T02	Cap Screw	8	25	19T25	Spring Pin	1
3	19T03	Spring Washer	8	26	19T26	Rotor Blade	1
4	19T04	Hammer Case	1	27	19T27	Rotor	6
5	19T05	Anvil Bushing	1	28	19T28	Rear End Plate	1
7	19T07	Anvil Collar (3/8" Anvil)	1	29	19T29	Ball Bearing	1
	19T07-1	Anvil Collar (1/2" Anvil)		30	19T30	Snap Ring	1
8	19T08	O-Ring (3/8" Anvil)	1	31	19T31	Rear Gasket	1
	19T08-1	O-Ring (1/2" Anvil)		32	19T32	Rear Cover	1
9	19T09	Anvil Spacer	1	33	19T33	Valve Sleeve	1
10	19T10	Anvil (3/8")	1	34	19T34	O-Ring	2
	19T10-1	Anvil (1/2")		35	19T35	Reverse Valve	1
11	19T11	Hammer Pin	2	36	19T36	Spring	1
12	19T12	Hammer Dog	2	37	19T37	Pin	1
13	19T13	Drive Cam	1	38	19T38	Trigger	1
14	19T14	Hammer Cage	1	39	19T39	Spring Pin	1
15	19T15	Rear Washer	1	40	19T40	Bushing	1
16	19T16	Front Gasket	1	41	19T41	Valve Stem	1
17	19T17	Set Screw	1	42	19T42	Spring	1
18	19T18	Housing	1	43	19T43	Exhaust Deflector	1
19	19T19	Ball Bearing	1	44	19T44-1	Air Inlet (1/4" PF)	1
20	19T20	O-Ring	1		19T44-2	Air Inlet (1/4" PT)	
21	19T21	Oil Seal	1		19T44-3	Air Inlet (1/4" NPT)	
22	19T22	Front End Plate	1	45	19T45	Muffler	1
23	19T23	Spring Pin	1				