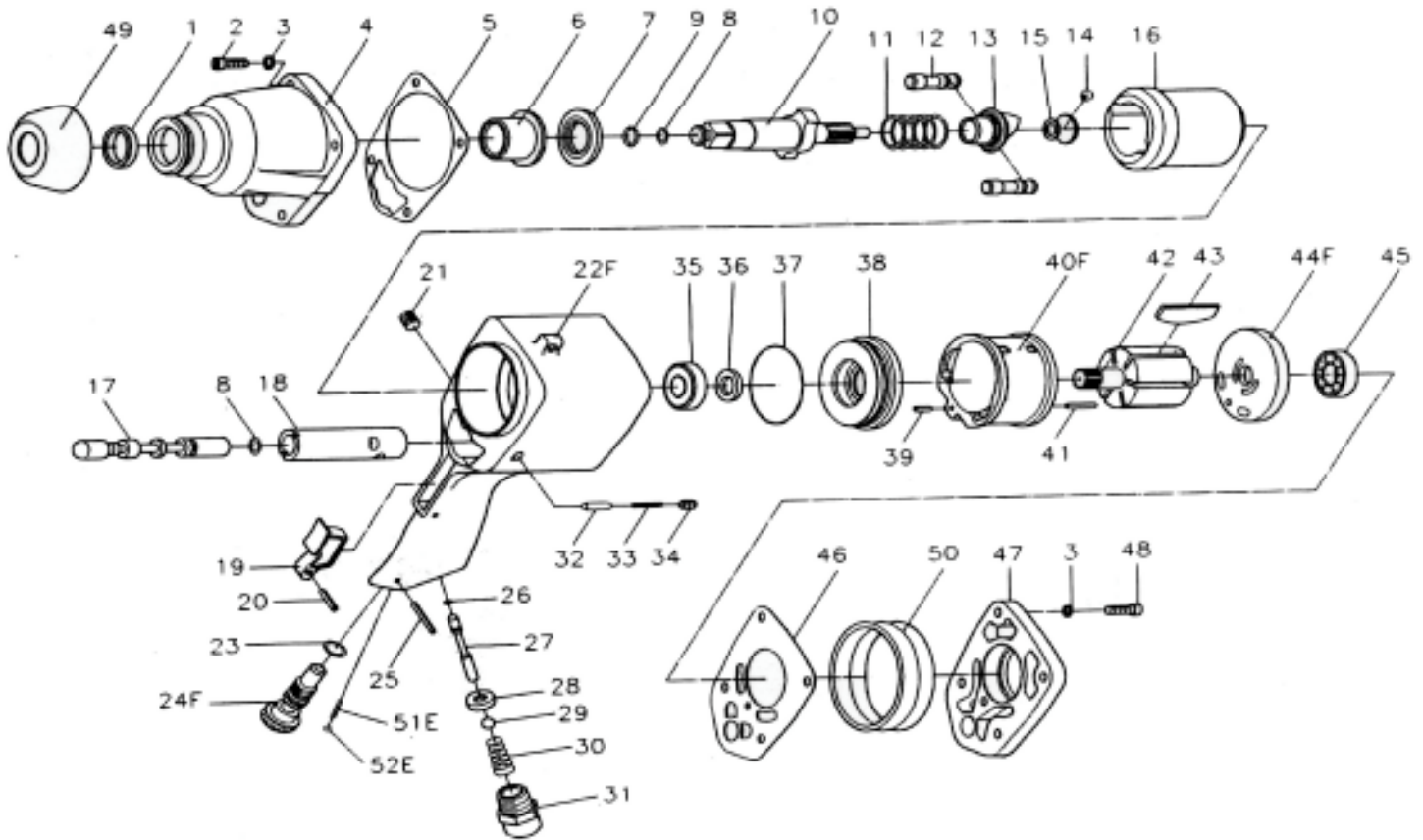




GISON Pneumatic Tools

GW-18 1/2" Heavy Duty Impact Wrench



PARTS LIST

✿ : Consuming Part

Item No.	Part No.	Description	Qty.	Item No.	Part No.	Description	Qty.
1	180001	Oil Seal	1	28	180028	Bushing	1
2	180002	Cap Screw	4	29	180029	Steel Ball	1
3	180003	Spring Washer	8	30	180030	Spring	1
4	180004	Hammer Case	1	31	180031A	Air Inlet (1/4"PF)	1
5	180005	Front Gasket	1		180031B	Air Inlet (1/4"PT)	
6	180006	Anvil Bushing	1		180031C	Air Inlet (1/4"NPT)	
7	180007	Spacer	1	32	180032	Pin	1
8	180008	O-Ring	2	33	180033	Spring	1
9	180009	Anvil Collar	1	34	180034	Set Screw	1
10	180010A	1" Anvil	1	35	180035	Bear Balling	1
	180010B	2" Anvil		36	180036	Oil Seal	1
11	180011	Spring	1	37	180037	O-Ring	1
12	180012	Hammer Pin	2	38	180038	Front End Plate	1
13	180013	Drive Cam	1	39	180039	Spring Pin	1
14	180014	Steel Ball	1	40F	180040F	Cylinder	1
15	180015	Cam Foundation	1	41	180041	Spring Pin	1
16	180016	Hammer Cage	1	42	180042	Rotor	1
17	180017	Reverse Valve	1	43	180043	Rotor Blade	6
18	180018	Valve Sleeve	1	44F	180044F	Rear End Plate	1
19	180019	Trigger	1	45	180045	Ball Bearing	1
20	180020	Spring Pin	1	46	180046	Rear Gasket	1
21	180021	Set Screw	1	47	180047	Rear Cover	1
22F	180022F	Housing	1	48	180048	Cap Screw	4
23	180023	O-Ring	1	49	180049	Protector Rubber	1
24F	180024F	Air Regulator	1	50	180050	Protector Rubber	1
25	180025	Spring Pin	1	51E	180051E	Spring	1
26	180026	O-Ring	1	52E	180052E	Steel Ball	1
27	180027	Valve Stem	1				