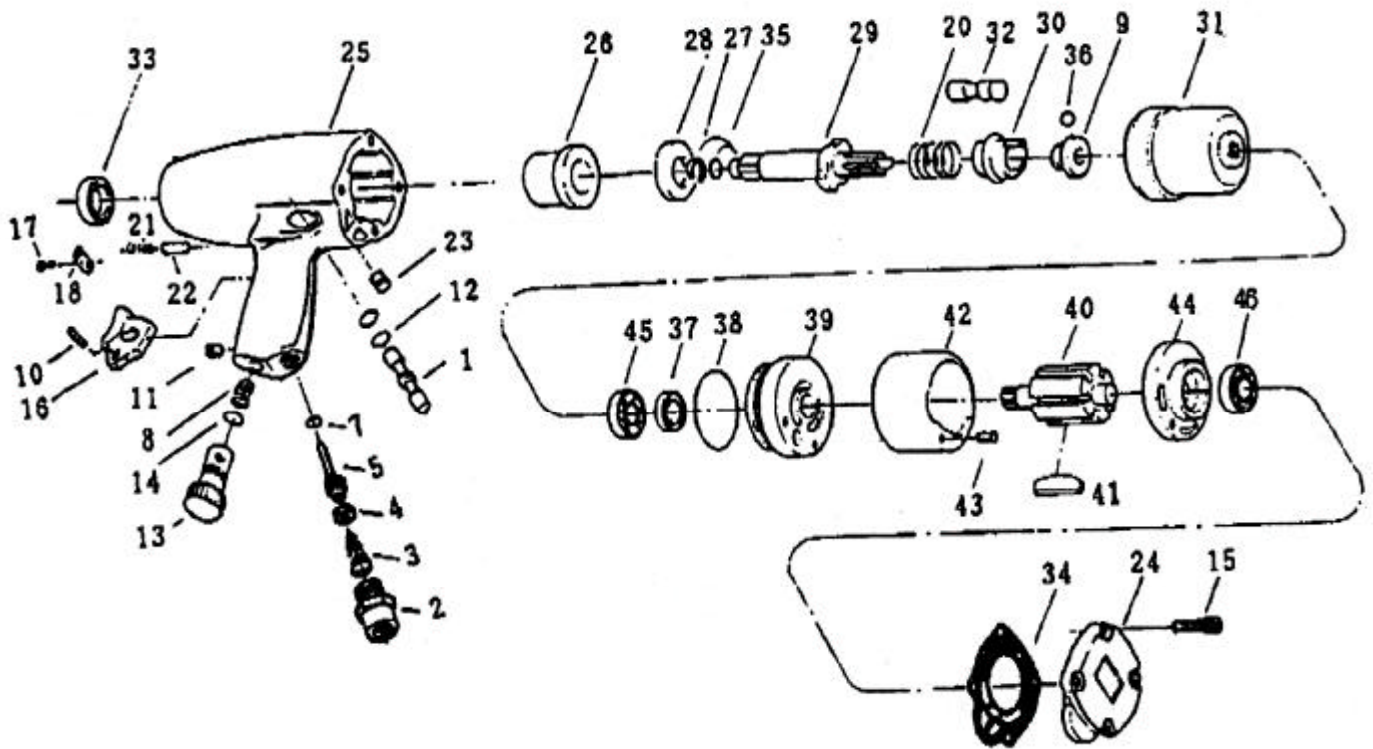


# 吉生 GISON

## GW-10/11 3/8" / 1/2" Mini Impact Wrench (Dyna)



### PARTS LIST

☆ : Consuming Part

Item No.	Part No.	Description	Qty.	Item No.	Part No.	Description	Qty.
1	11001	Reverse Valve	1	27	11027-1	Anvil Collar (3/8")	1
2	11002	Hose Adaptor	1		11027-2	Anvil Collar (1/2")	
3	11003	Spring	1	28	11028	Washer	1
4	11004	Retainer	1	29	11029-1	Anvil (3/8")	1
5	11005	Valve Stem	1		11029-2	Anvil (1/2")	
7	11007	O-Ring	1	30	11030	Cam	1
8	11008	Spring	1	31	11031	Hammer Cage	1
9	11009	Spindle Guide	1	32	11032	Pin	1
10	11010	Spring Pin	1	33	11033	Oil Seal	1
11	11011	Set Screw	1	34	11034	Gasket	1
12	11012	O-Ring	1	35	11035-1	O-Ring (3/8")	1
13	11013	Air Regulator	1		11035-2	O-Ring (1/2")	
14	11014	O-Ring	1	36	11036	Cam Ball	1
15	11015	Screw	1	37	11037	Oil Seal	1
16	11016	Trigger	1	38	11038	O-Ring	1
17	11017	Screw	1	39	11039	Front Plate	1
18	11018	Exhaust Deflector	1	40	11040	Rotor	1
20	11020	Spring	1	41	11041	Rotor Blade	1
21	11021	Spring	1	42	11042	Cyl Inder	1
22	11022	Pin	1	43	11043	Pin	1
23	11023	Set Screw	1	44	11044	Rear End Plate	1
24	11024	Rear Cover	1	45	11045	Ball Bearing	1
25	11025	Motor Housing	1	46	11046	Ball Bearing	1
26	11026	Bushing	1				