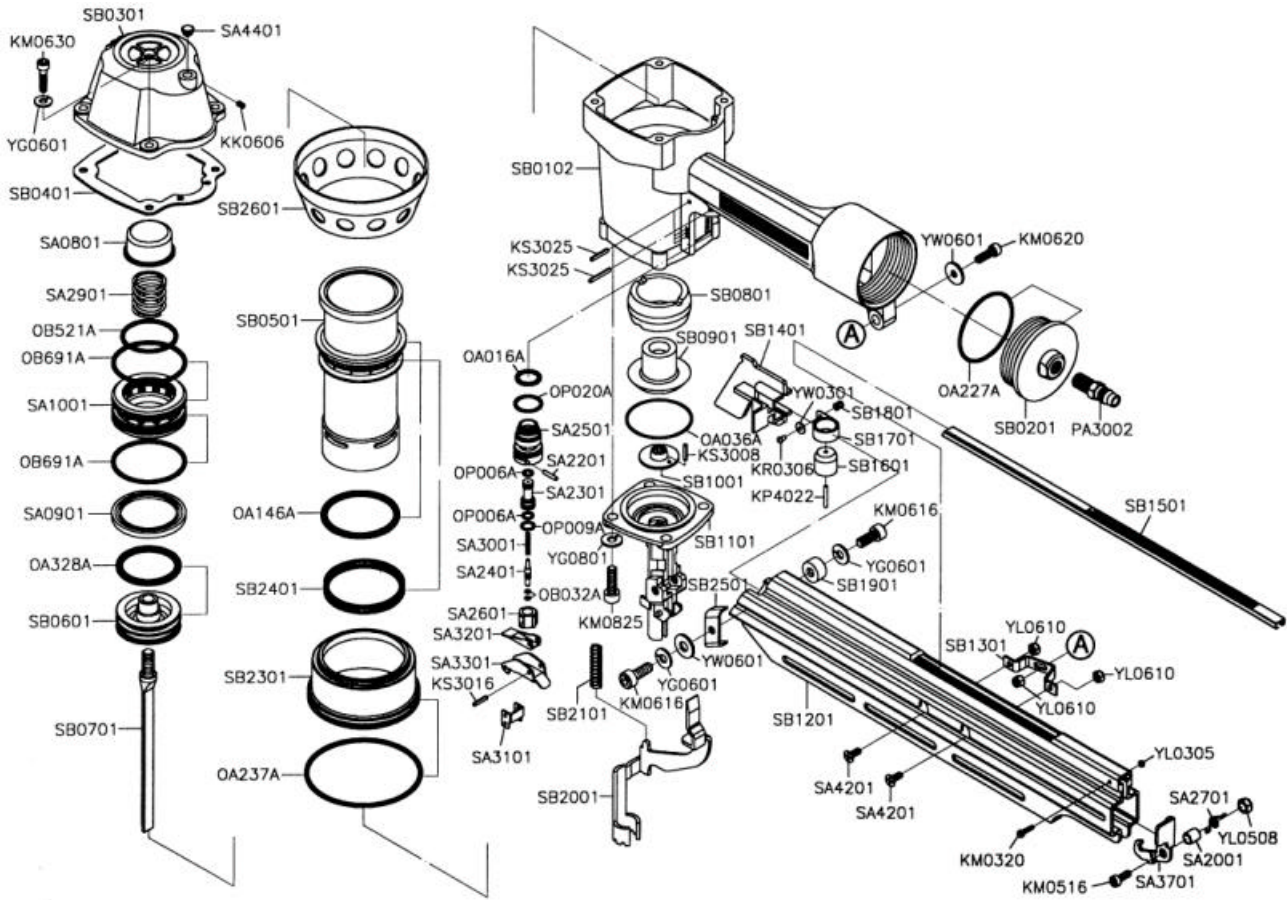


# 吉生 GISON

## GP-S90B Heavy Duty Strip (Stick) Framing Nailer



### PARTS LIST

⊛ : Consuming Part

Item No.	Part No.	Description	Qty.	Item No.	Part No.	Description	Qty.	Item No.	Part No.	Description	Qty.
1	KK0606	Set Screw (M6 × 1.0-6L)	1	26	SA0801	Piston Stop	1	51	SB0801	Outer Bumper	1
2	KM0320	Hex.Soc.Hd.Bolt (M3 × 0.5-20L)	1	27	SA0901	Head Valve Seal	1	52	SB0901	Inner Bumper	1
3	KM0516	Hex.Soc.Hd.Bolt (M5 × 0.8-16L)	1	28	SA1001	Head Valve Piston	1	53	SB1001	Driver Guide	1
4	KM0616	Hex.Soc.Hd.Bolt (M6 × 1.0-16L)	2	29	SA2001	Latch Bushing	1	54	SB1101	Nose	1
5	KM0620	Hex.Soc.Hd.Bolt (M6 × 1.0-20L)	1	30	SA2201	Stop Pin	1	55	SB1201	Magazine Seat	1
6	KM0630	Hex.Soc.Hd.Bolt (M6 × 1.0-30L)	4	31	SA2301	Pilot Valve	1	56	SB1301	Support	1
7	KM0825	Hex.Soc.Hd.Bolt (M8 × 1.25-25L)	4	32	SA2401	Trigger Valve Stem	1	57	SB1401	Pusher	1
8	KP4022	Stop Pin (∅4-22L)	1	33	SA2501	Trigger Valve Seat	1	58	SB1501	Nail Guide	1
9	KR0306	Button Hd.Bolt (M3 × 0.5-6L)	1	34	SA2601	Inner Valve Seat	1	59	SB1601	Roller	1
10	KS3008	Spring Pin (∅3-8L)	1	35	SA2701	Latch Spring	1	60	SB1701	Pusher Spring	1
11	KS3016	Spring Pin (∅3-16L)	1	36	SA2901	Compression Spring	1	61	SB1801	Spring Seat	1
12	KS3025	Spring Pin (∅25L)	4	37	SA3001	Spring	2	62	SB1901	Washer	1
13	OA016A	O-Ring (ARP568-016)	1	38	SA3101	Safety Guide	1	63	SB2001	Safety Lever	1
14	OA036A	O-Ring (ARP568-036)	1	39	SA3201	Contact Lever	1	64	SB2101	Spring	1
15	OA146A	O-Ring (ARP568-146)	1	40	SA3301	Trigger	1	65	SB2301	Cylinder Ring	1
16	OA227A	O-Ring (ARP568-227)	1	41	SA3701	Latch	1	66	SB2401	Check Seal	1
17	OA237A	O-Ring (ARP568-237)	1	42	SA4201	Bolt	2	67	SB2501	Support	1
18	OA328A	O-Ring (ARP568-328)	1	43	SA4401	Grommet	1	68	SB2601	Retaining Ring	1
19	OB032A	O-Ring (2.5 × 1.4)	1	44	SB0102	Body	1	69	YG0601	Spring Washer (∅6)	6
20	OB521A	O-Ring (51.5 × 3.1)	1	45	SB0201	End Cap	1	70	YG0801	Spring Washer (∅8)	4
21	OB691A	O-Ring (68.5 × 2.95)	2	46	SB0301	Cylinder Cap	1	71	YL0305	Lock Nut (M3 × 0.5)	1
22	OP006A	O-Ring (P6)	2	47	SB0401	Cap Seal	1	72	YL0508	Lock Nut (M5 × 0.8)	1
23	OP009A	O-Ring (P9)	1	48	SB0501	Cylinder	1	73	YL0610	Lock Nut (M6 × 1.0)	3
24	OP020A	O-Ring (P20)	1	49	SB0601	Main Piston	1	74	YW0310	Flat Washer (∅3)	1
25	PA3002	Coupling Plug (1/4")	1	50	SB0701	Driver	1	75	YW0601	Flat Washer (∅6)	2