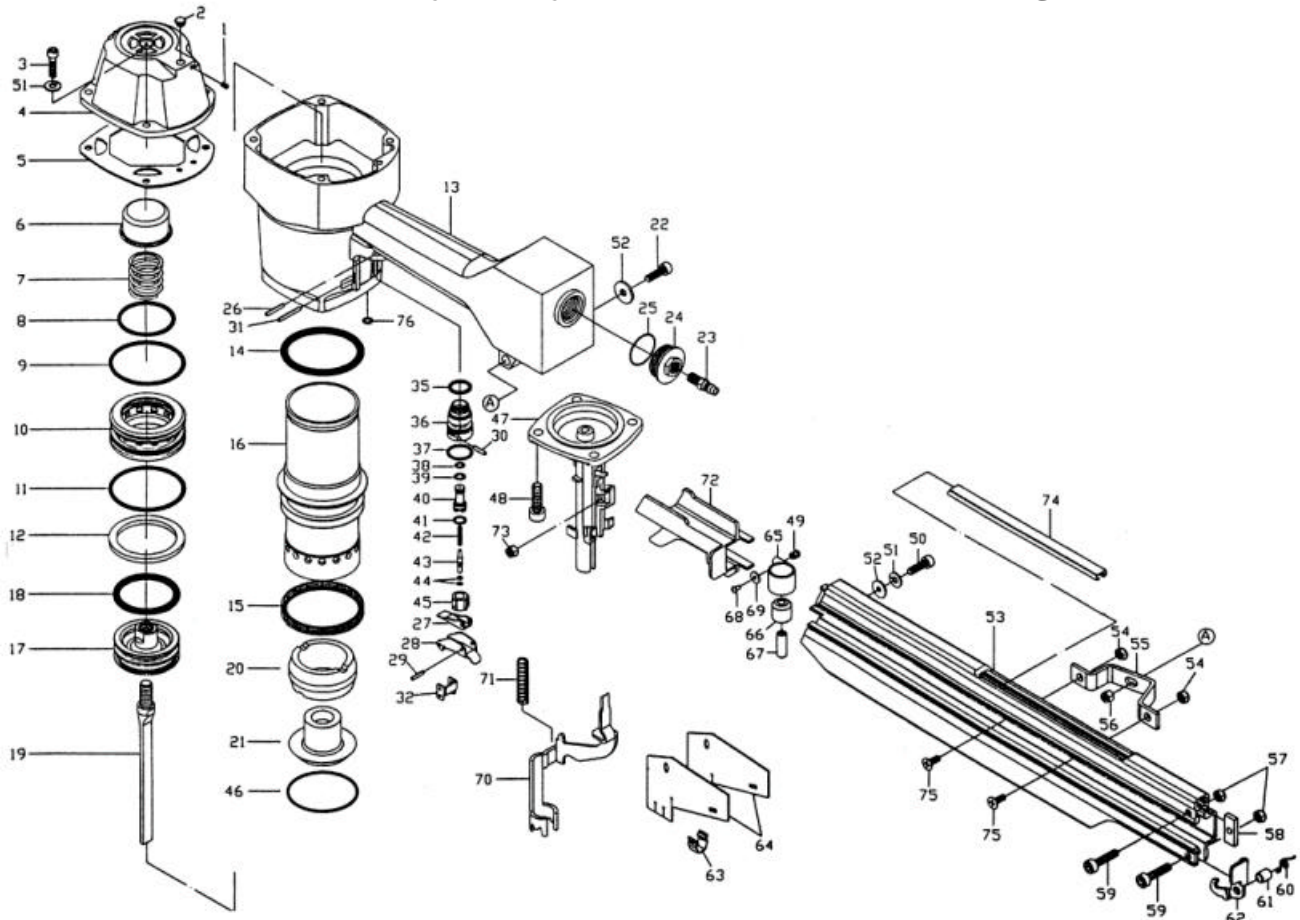


# 吉生 GISON

## GP-S100C Heavy Duty Strip (Stick) Framing Nailer



### PARTS LIST

⊛ : Consuming Part

Item No.	Part No.	Description	Qty.	Item No.	Part No.	Description	Qty.	Item No.	Part No.	Description	Qty.
1	KK0606	Set Screw (M6x1.0-6L)	1	26	KS3025	Spring Pin (∅3-25L)	1	53	SC0101	Magazine Seat	1
2	SA4401	Grommet	1	27	SA3201	Contact Lever	1	54	YL0610	Lock Nut (M6x1.0)	2
3	KM0625	Hex.Soc.HD.Bolt (M6x1.0-25L)	4	28	SA3301	Trigger	1	55	SA4001	Support	1
4	SB0301	Cylinder Cap	1	29	KS3016	Spring Pin (∅3-16L)	1	56	YL0610	Lock Nut (M6x1.0)	1
5	SB0401	Cap Seal	1	30	SA2201	Stop Pin	2	57	YL0508	Lock Nut (M5x0.8)	2
6	SA0801	Piston Stop	1	31	KS3025	Spring Pin (∅3-25L)	3	58	SA3802	Pusher Stop	1
7	SA2901	Compression Spring	1	32	SA3101	Safety Guide	1	59	KM0520	Hex.Soc.HD.Bolt (M5x0.8-20L)	2
8	OB521A	O-Ring (51.5x3.1)	1	35	OA016A	O-Ring (ARP568-016)	1	60	SA2701	Latch Spring	1
9	OB691A	O-Ring (68.5x2.95)	1	36	SA2501	Trigger Valve Seat	1	61	SA2001	Latch Bushing	1
10	SA1001	Head Valve Piston	1	37	OP020A	O-Ring (P20)	1	62	SA3701	Latch	1
11	OB691A	O-Ring (68.5x2.95)	1	38	OP006A	O-Ring (P6)	1	63	SA3901	Ring	1
12	SA0901	Head Valve Seal	1	39	OP007A	O-Ring (P7)	1	64	SA1601	Dust Shield	1
13	SA0101	Body	1	40	SA2301	Pilot Valve	1	65	SA1701	Pusher Spring	1
14	OA148A	O-Ring (ARP568-148)	1	41	OP009A	O-Ring (P9)	1	66	SA1801	Roller	1
15	SA0501	Check Seal	1	42	SA3001	Spring	1	67	SA2101	Roller Pin	1
16	SA0401	Cylinder	1	43	SA2401	Trigger Valve Stem	1	68	KR0306	Button HD. Bolt (M3x0.5-6L)	1
17	SA1101	Main Piston	1	44	OB032A	O-Ring (2.5x1.4)	2	69	YW0301	Flat Washer (∅3)	1
18	OB522A	O-Ring (52x6.35)	1	45	SA2601	Inner Valve Seat	1	70	SA3501	Safety	1
19	SA1301	Driver	1	46	OA039A	O-Ring (ARP568-039)	1	71	SA2801	Spring	1
20	SA0601	Bumper A	1	47	SC0201	Nose	1	72	SA1401	Pusher	1
21	SA0701	Bumper B	1	48	KM0830	Hex.Soc.HD.Bolt(M8x1.25-30L)	4	73	YL0610	Lock Nut (M6x1.0)	1
22	KM0630	Hex.Soc.HD.Bolt (M6x1.0-30L)	1	49	SA3401	Spring Seat	1	74	SA3601	Nail Guide	1
23	PA3001	Coupling Plug (1/4")	1	50	KM0616	Hex.Soc.HD.Bolt (M6x1.0-16L)	1	75	SA4201	Screw	2
24	PA2001	End Cap	1	51	YG0601	Spring Washer (∅6)	5	76	OS004A	O-Ring (S-4)	1
25	OA126A	O-Ring (ARP568-126)	1	52	YW0601	Flat Washer (∅6)	2				