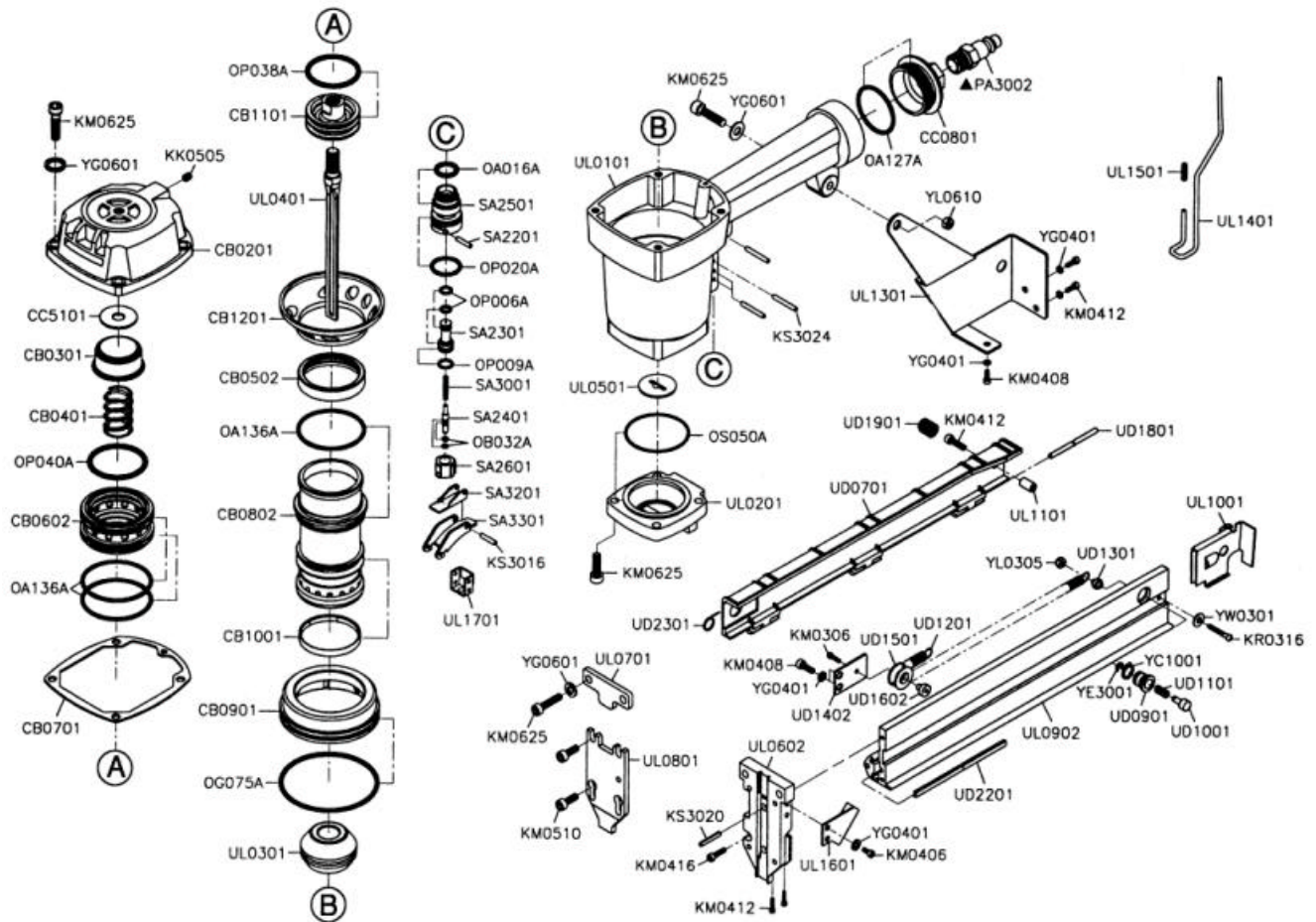


# 吉生 GISON

## GP-N50 Heavy Duty Air Stapler



### PARTS LIST

✳ : Consuming Part

Item No.	Part No.	Description	Qty.	Item No.	Part No.	Description	Qty.	Item No.	Part No.	Description	Qty.
1	CB0201	Cylinder Cap	1	28	OA136A	O-Ring (ARP568-136)	3	55	UD1801	Pivot	1
2	CB0301	Piston Stop	1	29	OB032A	O-Ring (2.5 × 1.4)	2	56	UD1901	Spring	1
3	CB0401	Compression Spring	1	30	OG075A	O-Ring (G75)	1	57	UD2201	Upper Rail	1
4	CB0502	Head Valve Seal	1	31	OP006A	O-Ring (P6)	2	58	UD2301	Spring	1
5	CB0602	Head Valve Piston	1	32	OP009A	O-Ring (P9)	1	59	UL0101	Body	1
6	CB0701	Cap Seal	1	33	OP020A	O-Ring (P20)	1	60	UD0201	Bottom Plate Assy.	1
7	CB0802	Cylinder	1	34	OP038A	O-Ring (P38)	1	61	UL0301	Bumper	1
8	CB0901	Cylinder Ring	1	35	OP040A	O-Ring (P40)	1	62	UL0401	Driver	1
9	CB1001	Check Seal	1	36	OS050A	O-Ring (S50)	1	63	UL0501	Bumper Plate	1
10	CB1101	Main Piston	1	37	PA3002	Coupling Plug (¼")	1	64	UL0602	Guide Plate	1
11	CB1201	Collar	1	38	SA2201	Stop Pin	2	65	UL0701	Cover Plate (A)	1
12	CC0801	End Cap	1	39	SA2301	PILOT VALVE	1	66	UL0801	Cover Plate (B)	1
13	CC5101	Piston Stop Spacer	1	40	SA2401	TRIGGER VALVE STEM	1	67	UL0902	Magazine Rail	1
14	KK0505	Set Screw (M5 × 0.8-5L)	1	41	SA2501	TRIGGER VALVE SEAT	1	68	UL1001	Pusher	1
15	KM0306	Hex.Soc.Hd.Bolt (M3 × 0.5-6L)	1	42	SA2601	INNER VALVE SEAT	1	69	UL1101	Distance Shaft	1
16	KM0406	Hex.Soc.Hd.Bolt (M4 × 0.7-6L)	2	43	SA3001	SPRING	1	70	UL1301	Support	1
17	KM0408	Hex.Soc.Hd.Bolt (M4 × 0.7-8L)	3	44	SA3201	CONTACT LEVER	1	71	UL1401	Safety	1
18	KM0412	Hex.Soc.Hd.Bolt (M4 × 0.7-12L)	5	45	SA3301	TRIGGER	1	72	UL1501	Safety Spring	1
19	KM0416	Hex.Soc.Hd.Bolt (M4 × 0.7-16L)	1	46	UD0701	DOOR	1	73	UL1601	Safety Stop	1
20	KM0510	Hex.Soc.Hd.Bolt (M5 × 0.8-10L)	4	47	UD0901	LATCH STUD BUSHING	1	74	UL1701	Safety Guide	1
21	KM0625	Hex.Soc.Hd.Bolt (M6 × 1.0-25L)	11	48	UD1001	PUSHER LATCH STUD	1	75	YC1001	G-Ring (Ø10)	1
22	KR0316	Button Hd.Bolt (M3 × 0.5-16L)	1	49	UD1101	SPRING	1	76	YE3001	E-Ring (Ø3)	1
23	KS3016	Spring Pin (Ø3-16L)	1	50	UD1201	PUSHER SPRING	1	77	YG0401	Spring Washer (Ø4)	7
24	KS3020	Spring Pin (Ø3-20L)	1	51	UD1301	PUSHER SPRING ANCHOR	1	78	YG0601	Spring Washer (Ø6)	7
25	KS3024	Spring Pin (Ø3-24L)	4	52	UD1402	ROLLER SET	1	79	YL0305	Lock Nut (M3 × 0.5)	1
26	OA016A	O-Ring (ARP568-016)	1	53	UD1501	ROLLER	1	80	YL0610	Lock Nut (M6 × 1.0)	1
27	OA127A	O-Ring (ARP568-127)	1	54	UD1602	ROLLER ANCHOR	1	81	YW0301	Flat Washer (Ø3)	1