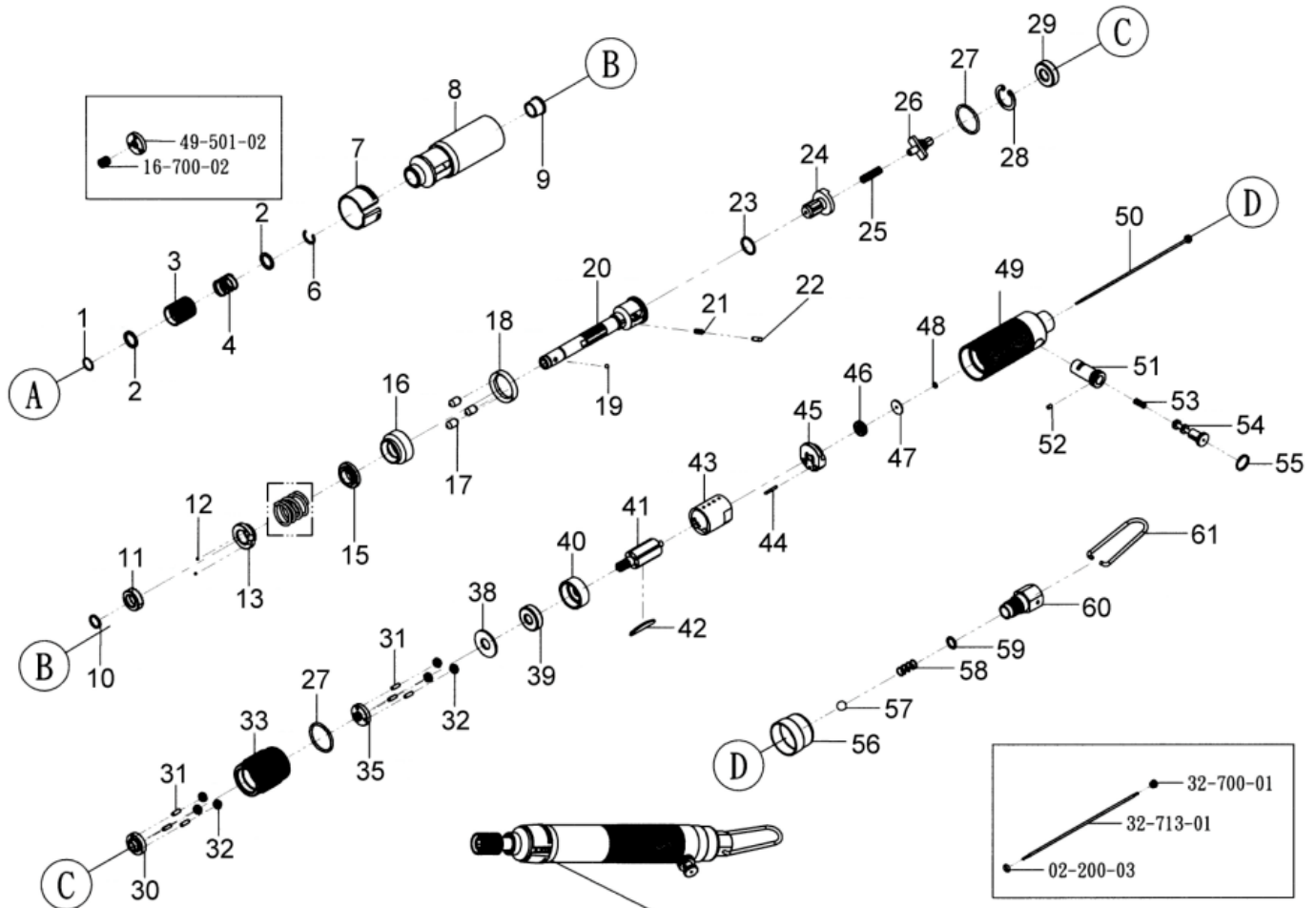


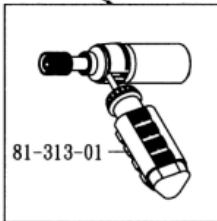
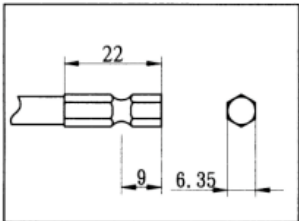


GISON Pneumatic Tools

GP-904/904B Air Shut-off Screw Driver



CONTROL SPRING	
14-1	(4-12 kgf/cm)
14-2	(11-23 kgf/cm)
14-3	(14-28 kgf/cm)



HOW TO ADJUST TORQUE RANGE
 Use The Screwdriver Adjust Torque Range
 High Torque When Trun To Left
 Low Torque When Trun Right

PARTS LIST

✳ : Consuming Part

Item No	Part No	Description	Qty	Item No	Part No	Description	Qty	Item No	Part No	Description	Qty
1	904001	Retaining Ring	1	20	904020	Anvil	1	43	904043	Cylinder	1
2	904002	Washer	2	21	904021	Spring	1	44	904044	Pin (ø2x14)	1
3	904003	Bushing	1	22	904022	Switch Rod	1	45	904045	Rear Plate	1
4	904004	Spring	1	23	904023	O-Ring (P13.5 x 1.5)	1	46	904046	Ball Bearing (695)	1
6	904006	Stopping Wheel (ø10mm)	1	24	904024	Driving Rod	1	47	904047	Washer	1
7	904007	Bushing	1	25	904025	Spring	1	48	904048	O-Ring (P2 x 1.5)	1
8	904008	Front Cap	1	26	904026	Driving Rod	1	49	904049	Handle	1
9	904009	Bushing	1	27	904027	O-Ring (P23.5 x 2)	2	50	904050	Driver	1
10	904010	Stopping Wheel	1	28	904028	Stopping Wheel	1	51	904051	Bushing	1
11	904011	Bolt	1	29	904029	Ball Bearing (R6)	1	52	904052	Pin (ø3x4)	1
12	904012	Steel Ball (ø2mm)	2	30	904030	Gear Seat	1	53	904053	Spring	1
13	904013	Washer	1	31	904031	Pin (ø3x9)	6	54	904054	Reverse Valve	1
14-1	904014-1	Spring (d: ø2.3)	1	32	904032	Gear	6	55	904055	Retaining Ring	1
14-2	904014-2	Spring (d: ø2.6)	1	33	904033	Gear Ring	1	56	904056	Muffer	1
14-3	904014-3	Spring (d: ø3)	1	35	904035	Gear	1	57	904057	Steel Ball (ø8mm)	1
15	904015	Washer	1	38	904038	Washer	1	58	904058	Spring	1
16	904016	Bushing	1	39	904039	Ball Bearing (608)	1	59	904059	O-Ring (P8 x 1.5)	1
17	904017	Driver	3	40	904040	Front Plate	1	60	904060	Air Inlet	1
18	904018	Bushing	1	41	904041	Rotor	1	61	904061	Hook	
19	904019	Steel Ball (ø1/8")	1	42	904042	Rotor Blade	5				