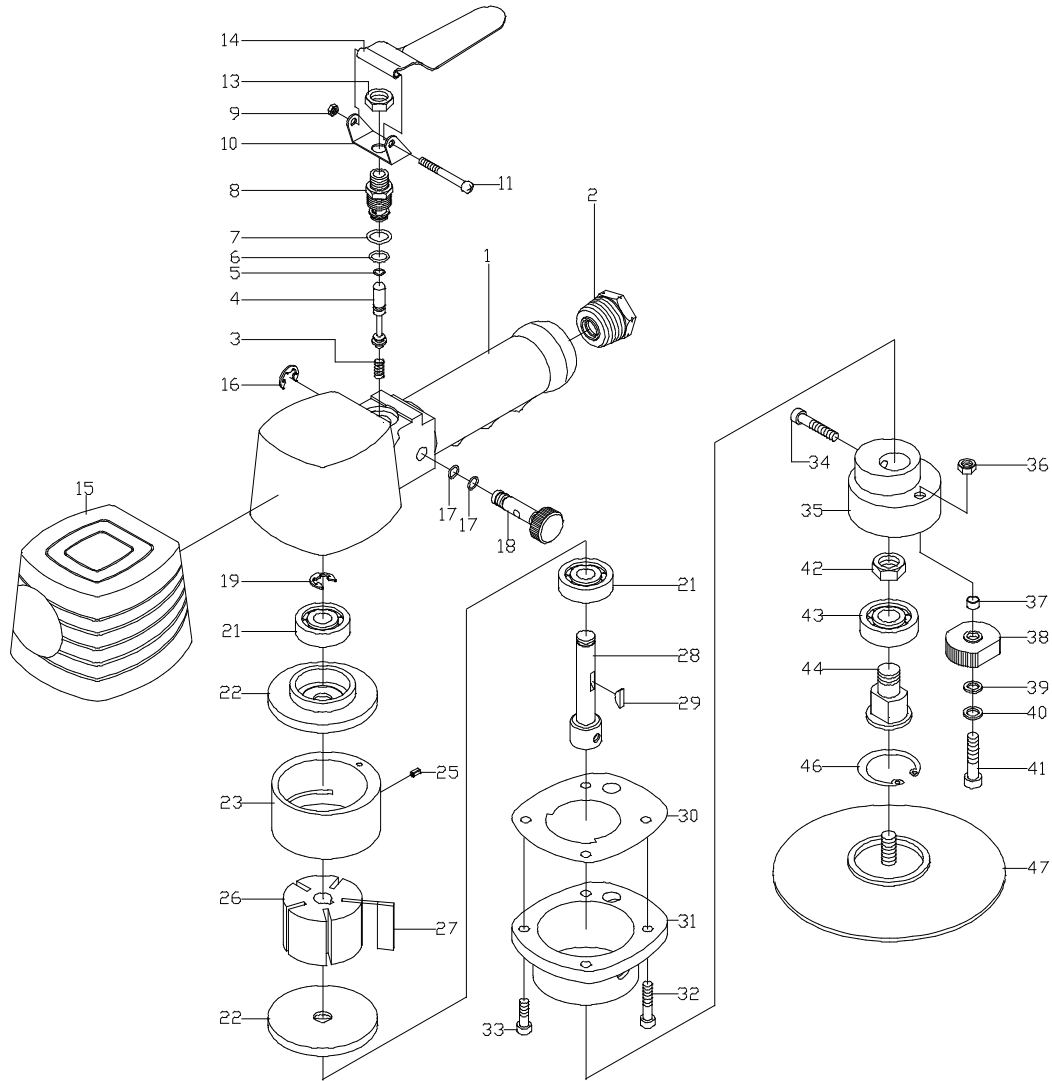




# GISON Pneumatic Tools

## GP-828 Dual Action Sander



### PARTS LIST

✿ :Consuming Part

Item No.	Part No.	Description	Qty.	Item No.	Part No.	Description	Qty
1	828A01	Motor Housing	1	26	828A26	Rotor	1
2	828A02	Hose Adapter	1	✿ 27	828A27	Rotor Blade	5
3	828A03	Throttle Valve Spring	1	28	828A28	Rotor Shaft	1
4	828A04	Throttle Valve Shaft	1	29	828A29	Key	1
✿ 5	828A05	O-Ring	1	30	828A30	Gasket	1
✿ 6	828A06	O-Ring	1	31	828A31	Drive Housing	1
✿ 7	828A07	O-Ring	1	32	828A32	Cap Screw	2
8	828A08	Valve Body	1	33	828A33	Cap Screw	2
✿ 9	828A09	Hex. Nut.	1	34	828A34	Cap Screw	1
10	828A10	Bracket	1	35	828A35	Orbital Hub.	1
11	828A11	Hinge Screw	1	✿ 36	828A36	Hex Nut	1
✿ 13	828A13	Hex. Nut.	1	37	828A37	Spacer	1
14	828A14	Throttle Level	1	38	828A38	Spindle Lock	1
15	828A15	Housing Cover	1	39	828A39	Spring Washer	1
16	828A16	Retaining Ring	1	40	828A40	Flat Washer	1
✿ 17	828A17	O-Ring	2	41	828A41	Cap Screw of Spring Lock	1
18	828A18	Regulator Valve	1	✿ 42	828A42	Hex. Nut	1
19	828A19	Retaining Ring	1	43	828A43	Ball Bearing	1
21	828A21	Ball Bearing	2	44	828A44	Drive Spindle	1
22	828A22	Plate	2	46	828A46	Retaining Ring	1
23	828A23	Cylinder	1	47	828A47	Pad	1
25	828A25	Cylinder Pin	1				