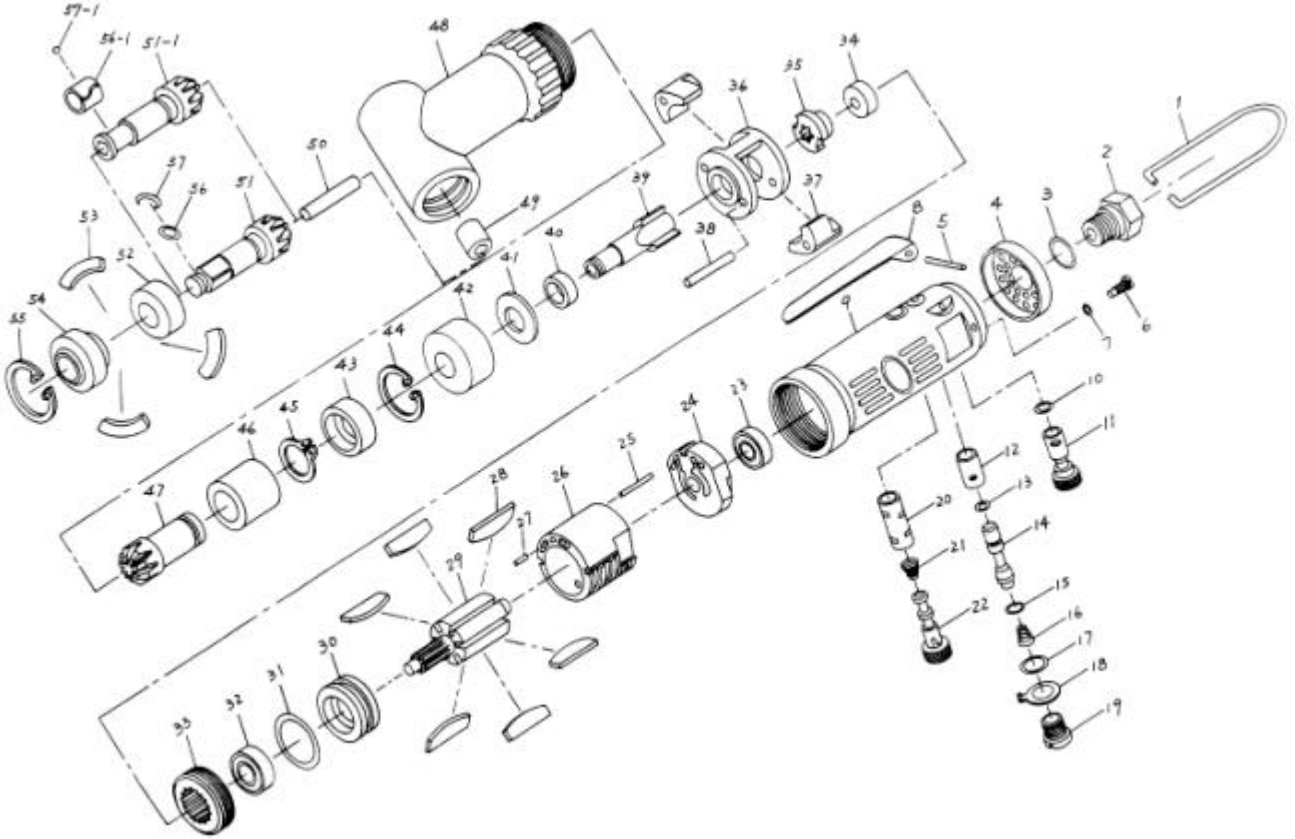


GISON Pneumatic Tools

GP-807L90 6~8m/m Angle Impact Driver



PARTS LIST

★ :Consuming Part

Item No.	Part No.	Description	Qty.	Item No.	Part No.	Description	Qty.
01	807L01	Hanger	1	31	807L31	O-Ring	1
02	807L02	Air Inlet	1	32	807L32	Ball Bearing (R6)	1
03	870L03	O-Ring	1	33	807L33	Lock Nut	1
04	807L04	Exhaust Cover	1	34	807L34	Spacer	1
05	807L05	Lever Pin	1	35	807L35	Cam	1
06	807L06	Screw	1	36	807L36	Hammer Case	1
07	807L07	O-Ring	1	37	807L37	Hammer Dog	2
08	807L08	Lever	1	38	807L38	Hammer Pin	2
09	807L09	Motor Housing	1	39	807L39	Anvil	1
10	807L10	O-Ring	1	40	807L40	Coller	1
11	807L11	Air Regulator	1	41	807L41	Anvil Spacer	1
12	807L12	Bushing	1	42	807L42	Bushing	1
13	807L13	O-Ring	1	43	807L43	Anvil Bushing	1
14	807L14	Valve Stem	1	44	807L44	Spring	1
15	807L15	O-Ring	1	45	807L45	Spring	1
16	807L16	Valve Spring	1	46	807L46	Anvil Bushing	1
17	807L17	O-Ring	1	47	807L47	Anvil Gear	1
18	807L18	Revers Retainer	1	48	807L48	Angle Case	1
19	807L19	Valve Screw	1	49	807L49	Bushing	1
20	807L20	Bushing	1	50	807L50	Pin	1
21	807L21	Spring	1	51	807L51	Gear Of Anvil (SQ)	1
22	807L22	Revers Valve	1	51-1	807L51-1	Gear Of Anvil (HEX)	1
23	807L23	Ball Bearing	1	52	807L52	Busing	1
24	807L24	Read End Plate	1	53	807L53	Washer	3
25	807L25	Cylinder Pin	1	54	807L54	Coller	1
26	807L26	Cylinder	1	55	807L55	Spring	1
27	807L27	Cylinder Pin	1	56	807L56	O-Ring	1
28	807L28	Rotor Blade	6	56-1	807L56-1	Steel Ball Coller	1
29	807L29	Rotor	1	57	807L57	Spring	1
30	807L30	Frint Plate	1	57-1	807L57-1	Steel Ball 1/8"	1