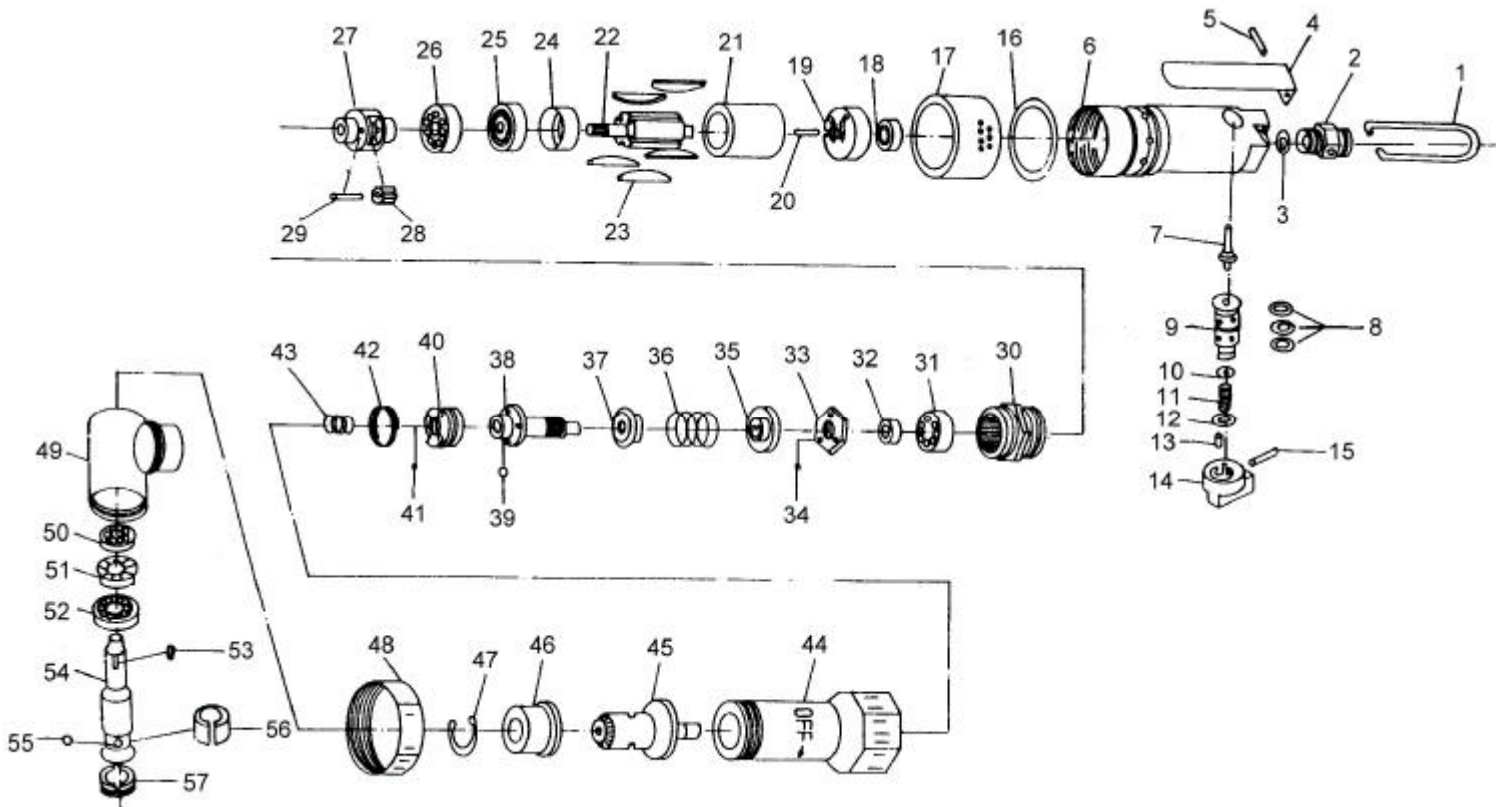


# GISON Pneumatic Tools

## GP-802L90 90° Angle Clutch Screw Driver



### PARTS LIST

✳ : Consuming Part

Item No.	Part No.	Description	Qty.	Item No.	Part No.	Description	Qty.
1	802L01	Hanger	1	30	802L30	Internal Gear	1
2	802L02	Air Inlet	1	31	802L31	Ball Bearing (6000)	1
3	802L03	Air Inlet Washer	1	32	802L32	Collar	1
4	802L04	Switch Lever	1	33	802L33	Adjust Nut	1
5	802L05	Switch Pin	1	34	802L34	Steel Ball (A)	3
6	802L06	Housing Case	1	35	802L35	Adjust Nut Seat	1
7	802L07	Pin	1	36	802L36	Adjust Spring	1
8	802L08	O-Ring (P8)	3	37	802L37	Adjust Spring Seat	1
9	802L09	Bushing	1	38	802L38	Clutch Spindle	1
10	802L10	O-Ring	1	39	802L39	Steel Ball	4
11	802L11	Spring	1	40	802L40	Clutch Dog	1
12	802L12	O-Ring	1	41	802L41	Steel Ball (A)	13
13	802L13	Pin	1	42	802L42	Dog Retainer	1
14	802L14	Reverse Valve	1	43	802L43	Center Spring	1
15	802L15	Pin	1	44	802L44	Clutch Case Nut	1
16	802L16	O-Ring	1	45	802L45	Anvil of Gear	1
17	802L17	Exhaust Cover	1	46	802L46	Bushing	1
18	802L18	Ball Bearing (696)	1	47	802L47	Retainer Ring	1
19	802L19	Rear End Plate	1	48	802L48	Nut	1
20	802L20	Cylinder Pin	1	49	802L49	Angle Case	1
21	802L21	Cylinder	1	50	802L50	Ball Bearing (625)	1
22	802L22	Rotor	1	51	802L51	Gear Driven	1
✳ 23	802L23	Rotor Blade	5	52	802L52	Ball Bearing (608)	1
24	802L24	Front Plate	1	53	802L53	Semicircle Pin	1
25	802L25	Ball Bearing (627)	1	54	802L49	Driven Shaft	1
26	802L26	Ball Bearing (608)	1	55	802L50	Steel Ball (1/8")	1
27	802L27	Planet Cage	1	56	802L51	Steel Ball Collar	1
✳ 28	802L28	Planet Wheel	1	57	802L52	Top Adjuster	1
29	802L29	Planet Pin	1				