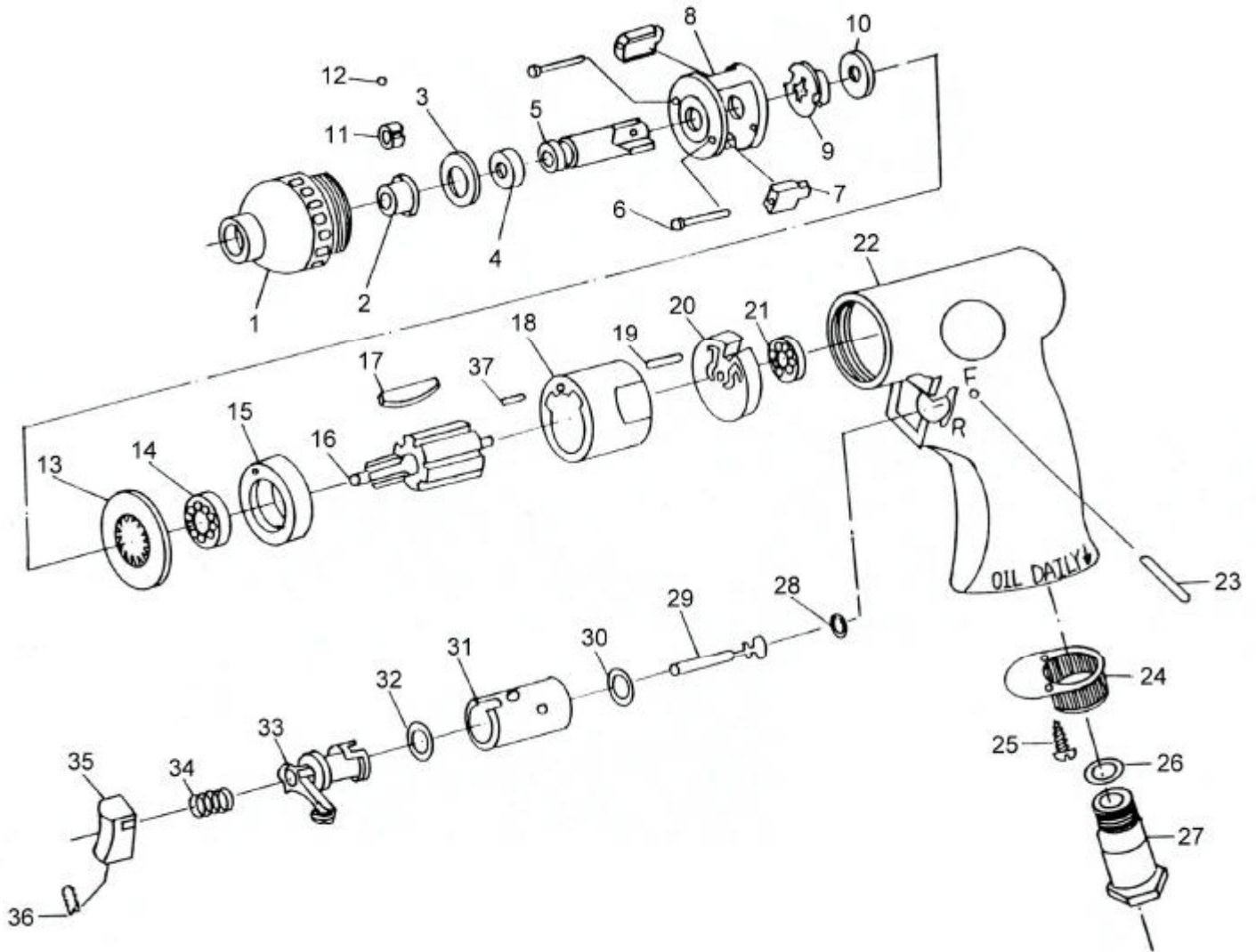


GISON Pneumatic Tools

GP-801LA Heavy Duty 4~5mm Air Screw Driver



PARTS LIST

✳ : Consuming Part

| Item No. | Part No. | Description | Qty. | Item No. | Part No. | Description | Qty. |
|----------|----------|--------------------|------|----------|----------|--------------------|------|
| 1 | 801LA01 | Front Housing | 1 | 19 | 801LA19 | Pin | 1 |
| 2 | 801LA02 | Bushing | 1 | 20 | 801LA20 | Rear End Plate | 1 |
| 3 | 801LA03 | Thrust Washer | 1 | 21 | 801LA21 | Ball Bearing (626) | 1 |
| 4 | 801LA04 | Collar | 1 | 22 | 801LA22 | Housing | 1 |
| 5 | 801LA05 | Anvil | 1 | 23 | 801LA23 | Pin | 1 |
| 6 | 801LA06 | Pin | 1 | 24 | 801LA24 | Exhaust Diffuser | 1 |
| 7 | 801LA07 | Hammer Dog | 2 | 25 | 801LA25 | Screw | 2 |
| 8 | 801LA08 | Hammer Seat | 1 | 26 | 801LA26 | O-Ring | 1 |
| 9 | 801LA09 | Cam | 1 | 27 | 801LA27 | Air Inlet | 1 |
| 10 | 801LA10 | Washer | 1 | 28 | 801LA28 | O-Ring | 1 |
| 11 | 801LA11 | Steel Ball Collar | 1 | 29 | 801LA29 | Valve Stem | 1 |
| 12 | 801LA12 | Steel Ball | 1 | 30 | 801LA30 | O-Ring | 1 |
| 13 | 801LA13 | Top Adjuster | 1 | 31 | 801LA31 | Reverse Bushing | 1 |
| 14 | 801LA14 | Ball Bearing (608) | 1 | 32 | 801LA32 | O-Ring | 1 |
| 15 | 801LA15 | Front Plate | 1 | 33 | 801LA33 | Reverse Lever | 1 |
| 16 | 801LA16 | Rotor | 1 | 34 | 801LA34 | Valve Spring | 1 |
| ✳ 17 | 801LA17 | Rotor Blade | 6 | 35 | 801LA35 | Trigger | 1 |
| 18 | 801LA18 | Cylinder | 1 | 36 | 801LA36 | Set Screw | 1 |