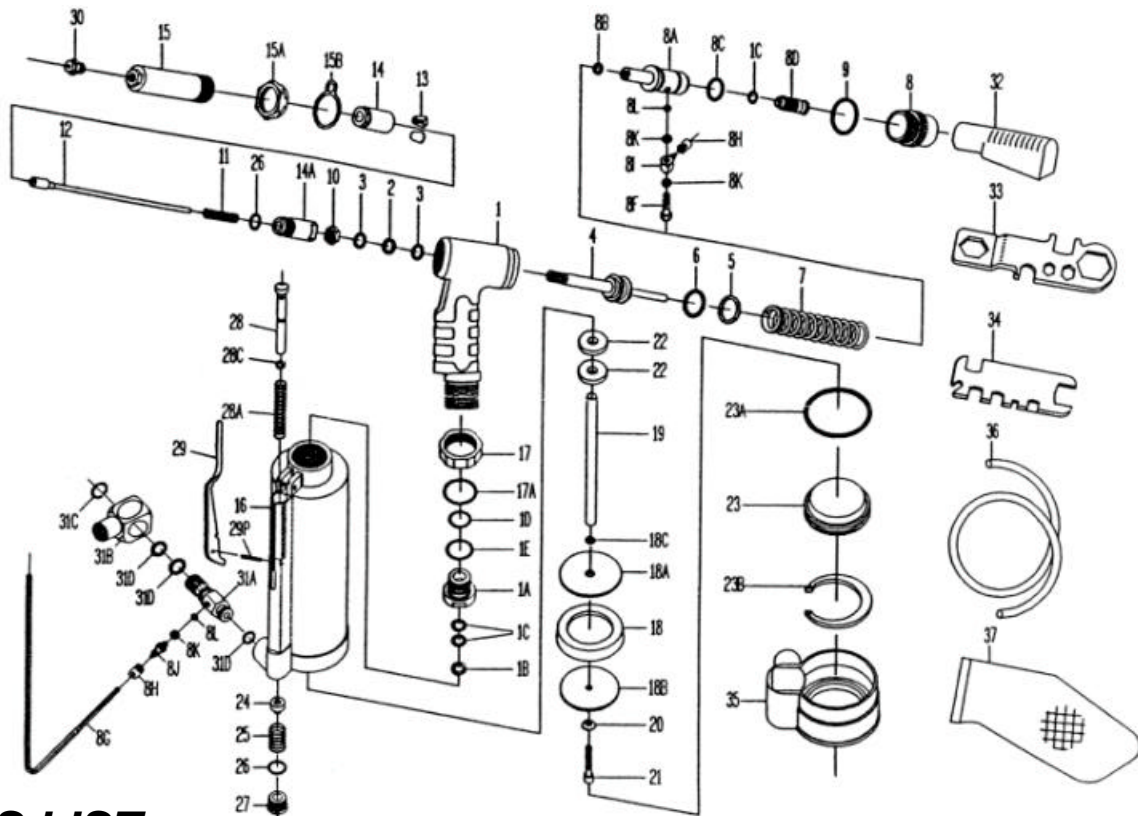


吉生 GISON

GP-484LV Air Hydraulic Riveter



PARTS LIST

✳ : Consuming Part

No.	Part No.	Description	Qty.	No.	Part No.	Description	Qty.
01	484LV01	Hydraulic Section	1	18	484LV18	Packing Ring	1
01A	484LV01A	Plunger Rod Guide	1	18A	484LV18A	Front Head Disc	1
01B	484LV01B	Back-Up Ring	1	18B	484LV18B	Rear Head Disc	1
01C	484LV01C	O-Ring	3	18C	484LV18C	O-Ring	1
01D	484LV01D	O-Ring	1	19	484LV19	Plunger Rod	1
01E	484LV01E	O-Ring	1	20	484LV20	Washer	1
02	484LV02	Back-Up Ring	1	21	484LV21	Lock Screw	1
03	484LV03	O-Ring	2	22	484LV22	Bumper Ring	2
04	484LV04	Hydraulic Plunger	1	22A	484LV22A	Piston Ass'y. (18-22) (ns)	1
05	484LV05	Back-Up Ring	1	23	484LV23	Air Cylinder Cap	1
06	484LV06	O-Ring	1	23A	484LV23A	O-Ring	1
07	484LV07	Return Spring (Y)	1	23B	484LV23B	Retainer Ring	1
08	484LV08	Rear Gland	1	24	484LV24	Throttle Valve Body	1
08A	484LV08A	Vacuum Tube	1	25	484LV25	Throttle Valve Spring	1
08B	484LV08B	O-Ring	1	26	484LV26	O-Ring	2
08C	484LV08C	O-Ring	1	27	484LV27	Valve Plug	1
08D	484LV08D	Vacuum Regulator	1	28	484LV28	Valve Tube Ass'y	1
08F	484LV08F	Socket	1	28A	484LV28A	Valve Tube Spring	1
08G	484LV08G	Air Hose	1	28C	484LV28C	O-Ring	1
08H	484LV08H	Cap	2	29	484LV29	Lever	1
08I	484LV08I	Swivel	1	29P	484LV29P	Roll Pin	1
08J	484LV08J	Socket (Lower)	1	30	484LV30	Nosepiece 3/32" (2.4mm)	1
08K	484LV08K	Washer	3		484LV30A	Nosepiece 1/8" (3.2mm)	1
08L	484LV08L	O-Ring	2		484LV30B	Nosepiece 5/32" (4.0mm)	1
09	484LV09	O-Ring	1		484LV30C	Nosepiece 3/16" (4.8mm)	1
10	484LV10	Nut	1		484LV30D	Nosepiece 3/16" (4.8mm)-"T" Rivet (Opt.)	1
11	484LV11	Spring	1	31	484LV31	Swivel Joint Ass'y. (31A-31D) (ns)	1
12	484LV12	Jaw Pusher	1	31A	484LV31A	Male Inlet Body (V)	1
13	484LV13	Jaw "M"	2	31B	484LV31B	Female Inlet Body (1/4"-18NPTF)	1
14	484LV14	Jaw Housing	1	31C	484LV31C	Snap Ring	1
14A	484LV14A	Jaw Housing Coupler	1	31D	484LV31D	O-Ring	3
15	484LV15	Head	1	32	484LV32	Deflector	1
15A	484LV15A	Lock Nut	1	33	484LV33	Multi-Wrench (A)	1
15B	484LV15B	Hanger (Opt.)	1	34	484LV34	Multi-Wrench (B)	1
16	484LV16	Air Cylinder Body	1	35	484LV35	Rubber Boot	1
17	484LV17	Lock Nut	1	36	484LV36	Guide Hose	1
17A	484LV17A	O-Ring	1	37	484LV37	Mandrel Collector (Opt.)	1