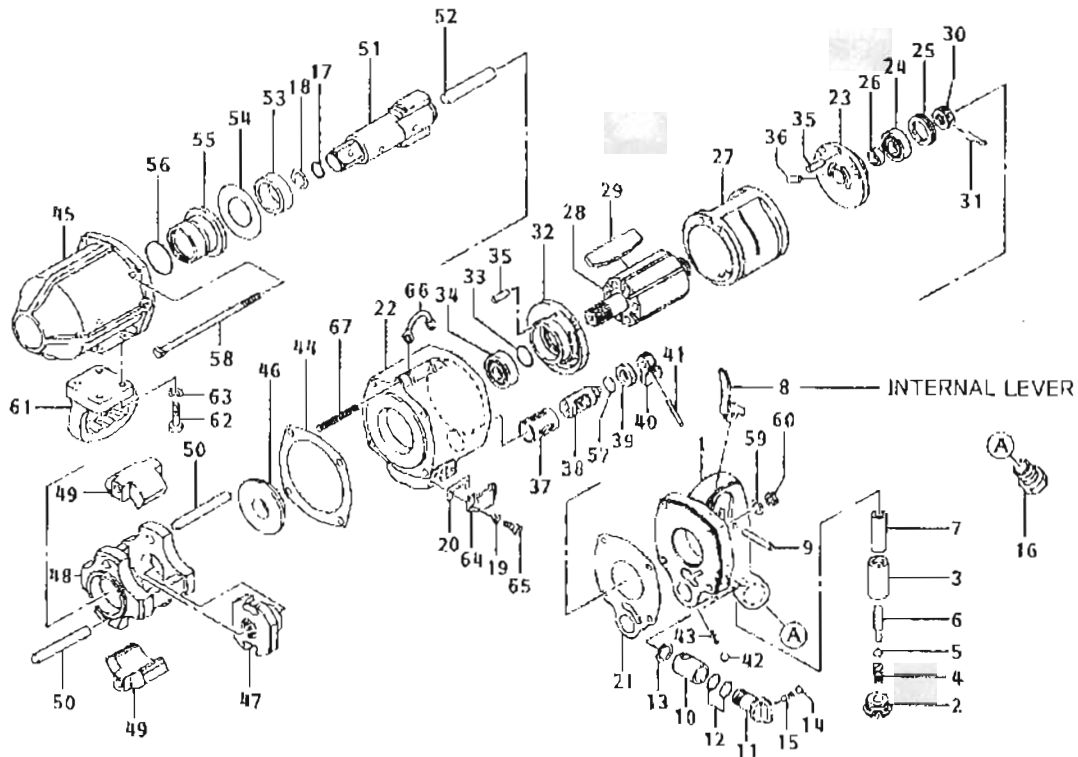


IMPACT WRENCH

38WE



No.	Parts No.	Description	Q'ty	Remark	No.	Parts No.	Description	Q'ty	Remark
1	128143B	HANDLE	1		36	SPW03008	KNOCK PIN	1	
2	128102	THROTTLE CAP	1		37	12826	REVERSE VALVE BUSH	1	
3	12804D	THROTTLE VALVE BUSH	1		38	128118B	REVERSE VALVE	1	
4	128101	THROTTLE SPRING	1		39	12828	REVERSE SPACE WASHER	1	
5	EB 5/8	THROTTLE VALVE	1		40	128130	REVERSE HANDLE	1	
6	12688D	THROTTLE VALVE ROD	1		41	SPW04022	REVERSE HANDLE PIN	1	
7	12606	THROTTLE GUIDE BUSH	1		42	SB 3/16	STOP BALL	1	
8	12811	THROTTLE LEVER	1		43	12629	STOP BALL SPRING	1	
9	NR50021B	THROTTLE LEVER PIN	1		44	12862B	BOTTOM SHEET PACKING	1	
10	128138B	ADJUST VALVE BUSH	1		45	128106	FRONT CASE	1	
11	128148C	ADJUST VALVE	1		46	12895B	SPACE COLLAR	1	
12	OP-16	ADJUST VALVE RING	2		47	128144B	DRIVER	1	
13	DS-22	STOP RING	1		48	12896	HAMMER CASE	1	
14	SB 5/32	STOP BALL	1		49	12869B	HAMMER	2	
15	11531	STOP BALL SPRING	1		50	12897	HAMMER STUD	2	
16	H1036	INLET BUSH	1		51	128149C	CHUCK DRIVER (CLIP)	1	
17	OR-14	O-RING	1		52	12639B	CENTER ROD	1	
18	12620D	CLIP	1		53	128104B	HAMMER CASE BUSH	1	
19	WSS040	SPRING WASHER	2		54	12898B	THRUST WASHER	1	
20	128163	MUFFLER PACKING	1		55	128142H	FRONT CASE BUSH	1	
21	128113D	TOP SHEET PACKING	1		56	OP-41	FRONT CASE BUSH RING	1	
22	128121B	CYLINDER CASE	1		57	OP-21	REVERSE VALVE RING	1	
23	128157B	TOP BEARING CASE	1		58	12843B	BOLT	4	
24	6204Z	TOP ROTOR BEARING	1		59	WS080	SPRING WASHER	4	
25	12856	BEARING NUT	1		60	N81108	NUT	4	
26	12819	ADJUST COLLAR	1		61	128120	GRIP HANDLE	1	
27	12820G	CYLINDER	1		62	B760818	BOLT	4	
28	128153C	ROTOR	1		63	WS080	SPRING WASHER	4	
29	12859D	ROTOR VANE	6		64	128141	MUFFLER COVER	1	
30	12620	ROTOR NUT	1		65	B760412	BOLT	2	
31	P03030	COTTER PIN	1		66	12646B	HOOK	1	
32	128158D	BOTTOM BEARING CASE	1		67	SPW05060	HOOK PIN	1	
33	OP-25	BEARING CASE RING	1						
34	6205Z	BOTTOM ROTOR BEARING	1						
35	SPW06014	KNOCK PIN	2						